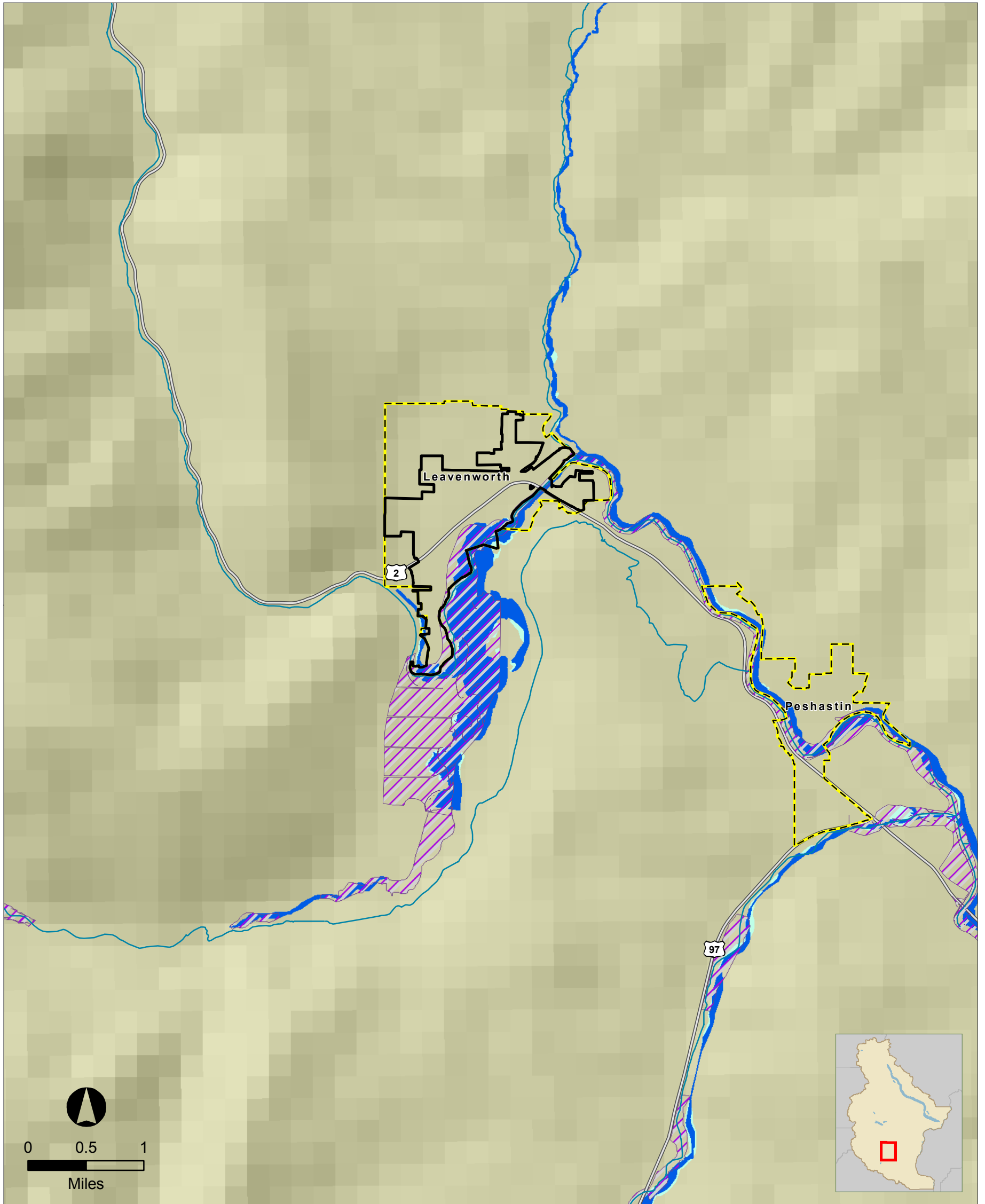




# FLOOD HAZARD & CHANNEL MIGRATION AREAS

CHELAN COUNTY MULTI-JURISDICTION NATURAL HAZARD MITIGATION PLAN 2010

## Leavenworth



The information included on this map has been compiled for Chelan County from a variety of sources and is subject to change without notice. Chelan County and its Consultants make no representations or warranties, express or implied, as to accuracy, completeness, timeliness, or rights to the use of such information. Chelan County and its Consultants shall not be liable for any general, special, indirect, incidental, or consequential damages including, but not limited to, lost revenues or lost profits resulting from the use or misuse of the information contained on this map.

Data Source: Chelan County, WSDOT, FEMA, TWC.

October 14, 2010.  
The Watershed Company.

### MAP LEGEND

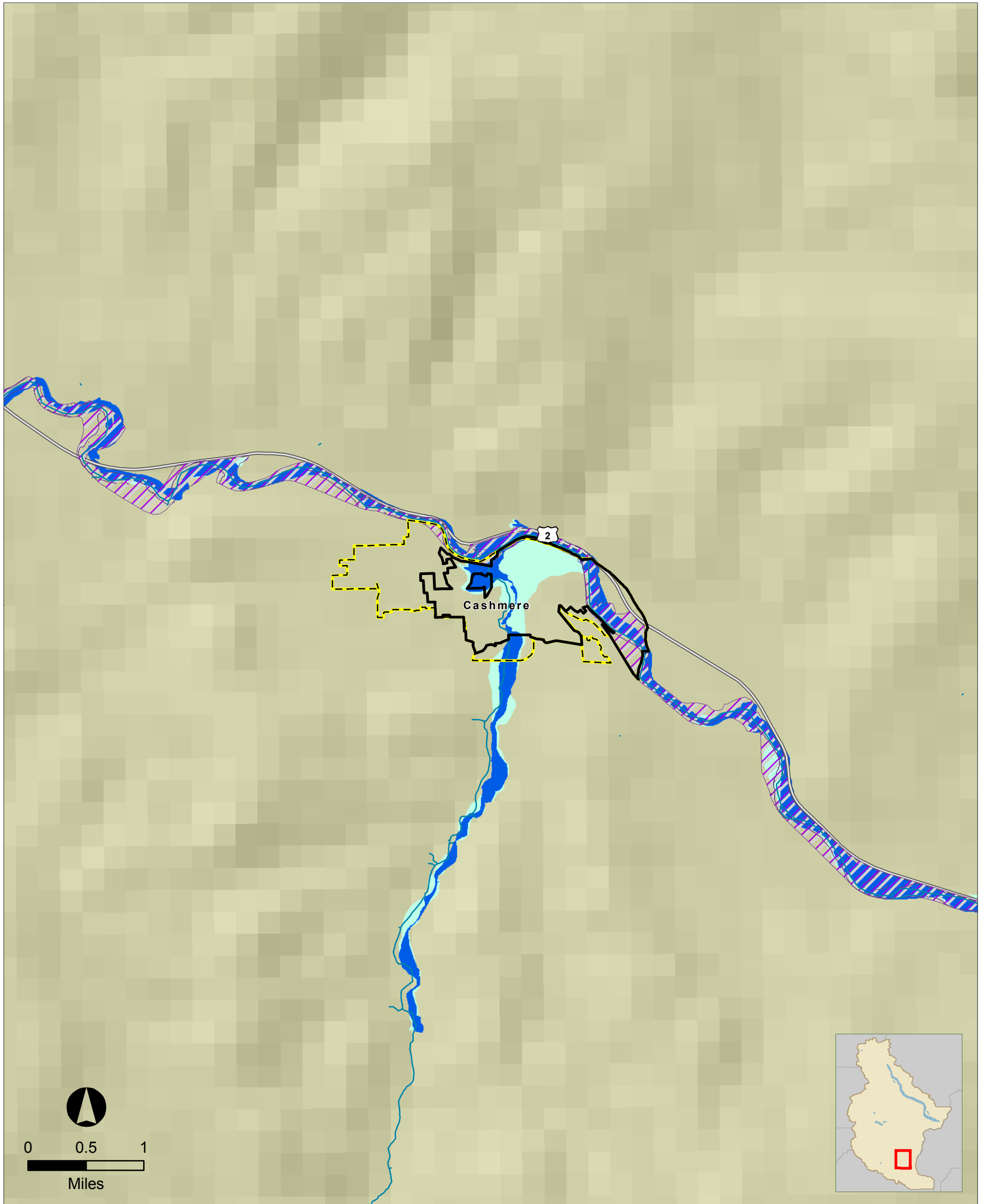
- Channel Migration Zone
- 100-year Flood Zone
- Between 100 and 500-year Flood Zone
- 500-year Flood Zone
- Streams
- Highway
- City Boundary
- UGA Boundaries
- County Boundary



# FLOOD HAZARD & CHANNEL MIGRATION AREAS

## CHELAN COUNTY MULTI-JURISDICTION NATURAL HAZARD MITIGATION PLAN 2010

### Cashmere



The information included on this map has been compiled for Chelan County from a variety of sources and is subject to change without notice. Chelan County and its Consultants make no representations or warranties, express or implied, as to accuracy, completeness, timeliness, or rights to the use of such information. Chelan County and its Consultants shall not be liable for any general, special, indirect, incidental, or consequential damages including, but not limited to, lost revenues or lost profits resulting from the use or misuse of the information contained on this map.

Data Source: Chelan County, WSDOT, FEMA, TWC.

October 14, 2010.  
The Watershed Company.

#### MAP LEGEND

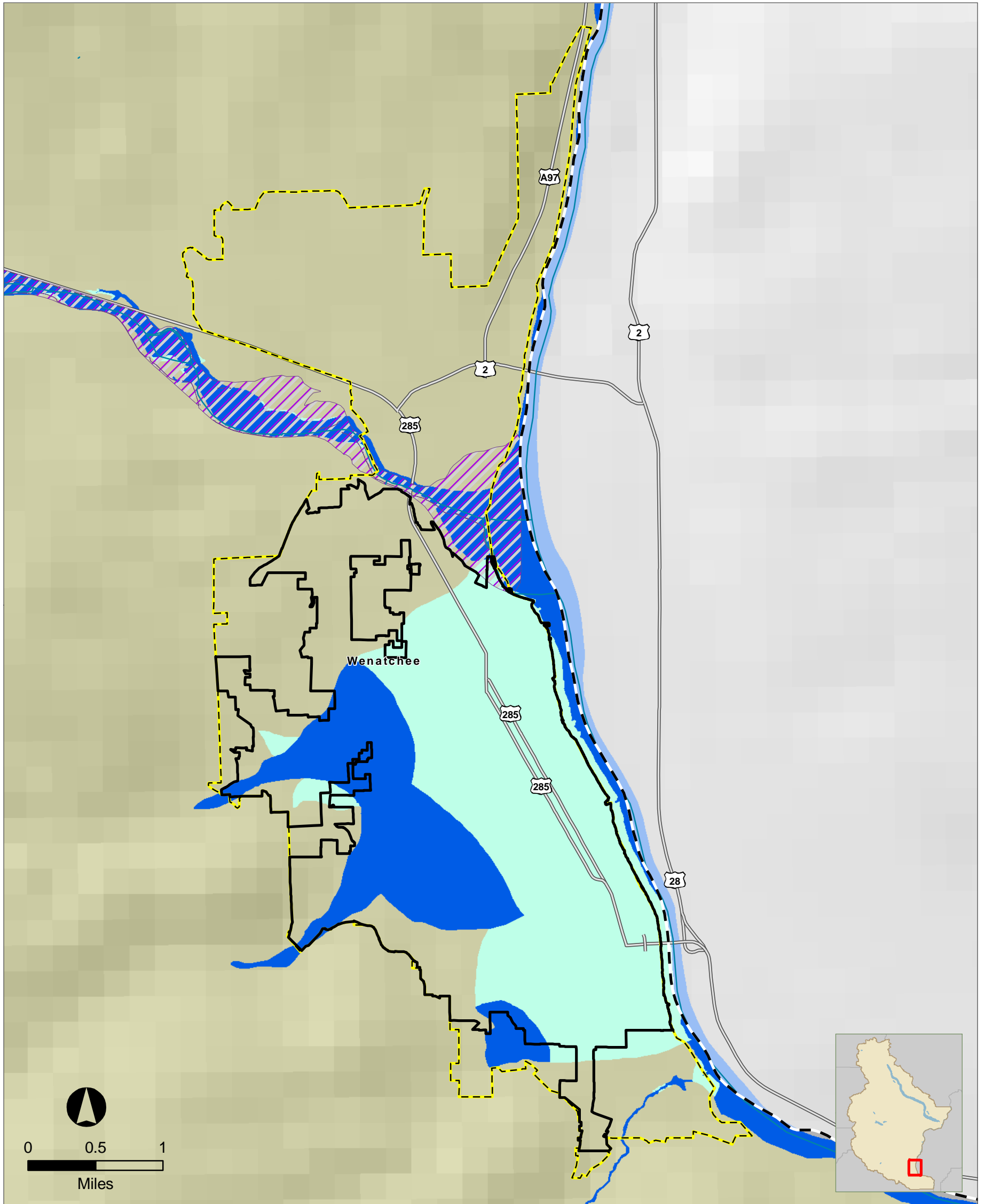
- Channel Migration Zone
- 100-year Flood Zone
- Between 100 and 500-year Flood Zone
- 500-year Flood Zone
- Streams
- Highway
- City Boundary
- UGA Boundaries
- County Boundary



# FLOOD HAZARD & CHANNEL MIGRATION AREAS

## CHELAN COUNTY MULTI-JURISDICTION NATURAL HAZARD MITIGATION PLAN 2010

### Wenatchee



#### MAP LEGEND

- Channel Migration Zone
- 100-year Flood Zone
- Between 100 and 500-year Flood Zone
- 500-year Flood Zone
- Streams
- Highway
- City Boundary
- UGA Boundaries
- County Boundary

The information included on this map has been compiled for Chelan County from a variety of sources and is subject to change without notice. Chelan County and its Consultants make no representations or warranties, express or implied, as to accuracy, completeness, timeliness, or rights to the use of such information. Chelan County and its Consultants shall not be liable for any general, special, indirect, incidental, or consequential damages including, but not limited to, lost revenues or lost profits resulting from the use or misuse of the information contained on this map.

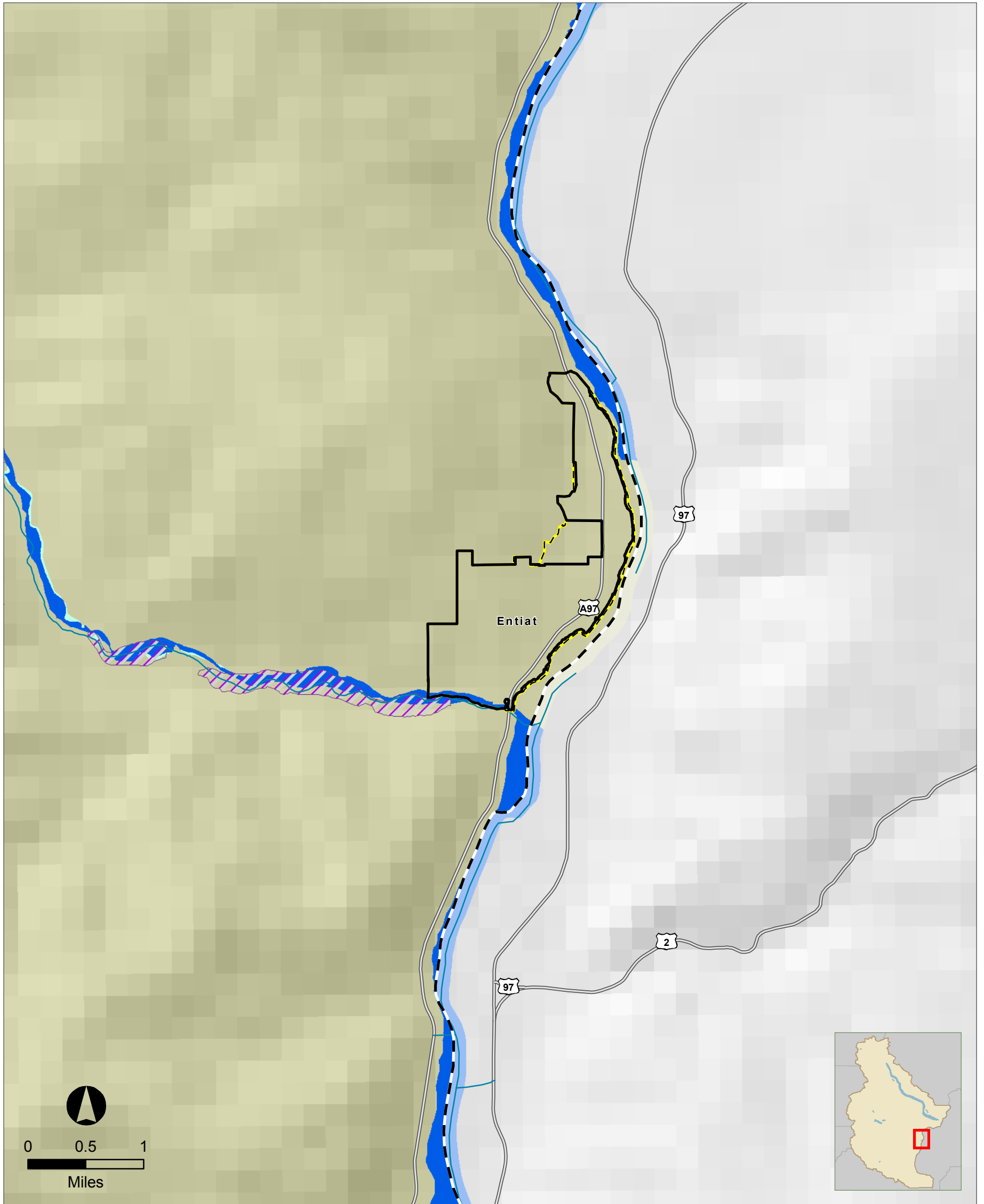
Data Source: Chelan County, WSDOT, FEMA, TWC.



# FLOOD HAZARD & CHANNEL MIGRATION AREAS

CHELAN COUNTY MULTI-JURISDICTION NATURAL HAZARD MITIGATION PLAN 2010

## Entiat



The information included on this map has been compiled for Chelan County from a variety of sources and is subject to change without notice. Chelan County and its Consultants make no representations or warranties, express or implied, as to accuracy, completeness, timeliness, or rights to the use of such information. Chelan County and its Consultants shall not be liable for any general, special, indirect, incidental, or consequential damages including, but not limited to, lost revenues or lost profits resulting from the use or misuse of the information contained on this map.

Data Source: Chelan County, WSDOT, FEMA, TWC.

October 14, 2010.  
The Watershed Company.

### MAP LEGEND

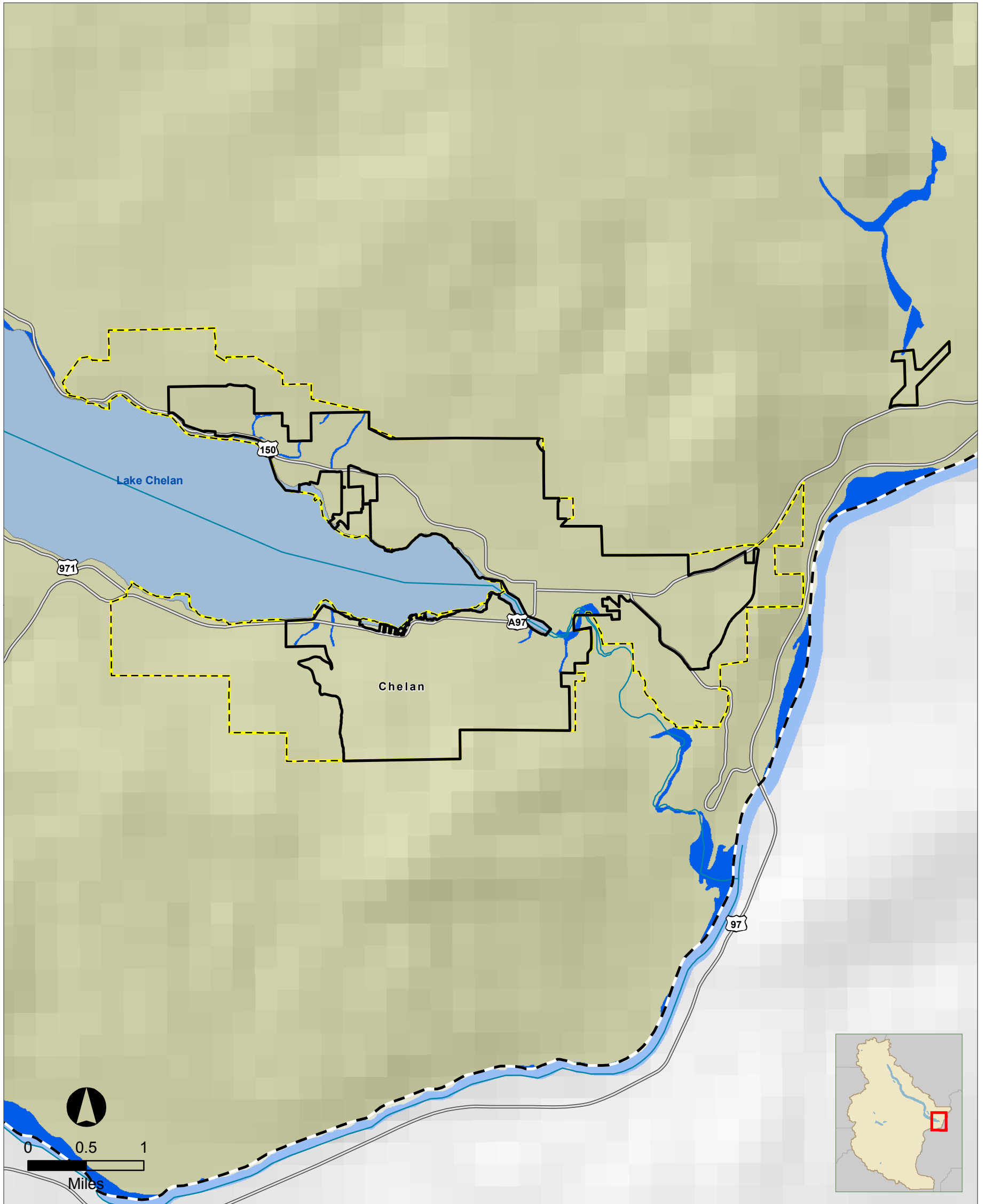
- Channel Migration Zone
- 100-year Flood Zone
- Between 100 and 500-year Flood Zone
- 500-year Flood Zone
- Streams
- Highway
- City Boundary
- UGA Boundaries
- County Boundary



# FLOOD HAZARD & CHANNEL MIGRATION AREAS

CHELAN COUNTY MULTI-JURISDICTION NATURAL HAZARD MITIGATION PLAN 2010

## Chelan



The information included on this map has been compiled for Chelan County from a variety of sources and is subject to change without notice. Chelan County and its Consultants make no representations or warranties, express or implied, as to accuracy, completeness, timeliness, or rights to the use of such information. Chelan County and its Consultants shall not be liable for any general, special, indirect, incidental, or consequential damages including, but not limited to, lost revenues or lost profits resulting from the use or misuse of the information contained on this map.

Data Source: Chelan County, WSDOT, FEMA, TWC.

October 14, 2010.  
The Watershed Company.

### MAP LEGEND

- Channel Migration Zone
- 100-year Flood Zone
- Between 100 and 500-year Flood Zone
- 500-year Flood Zone
- Streams
- Highway
- City Boundary
- UGA Boundaries
- County Boundary