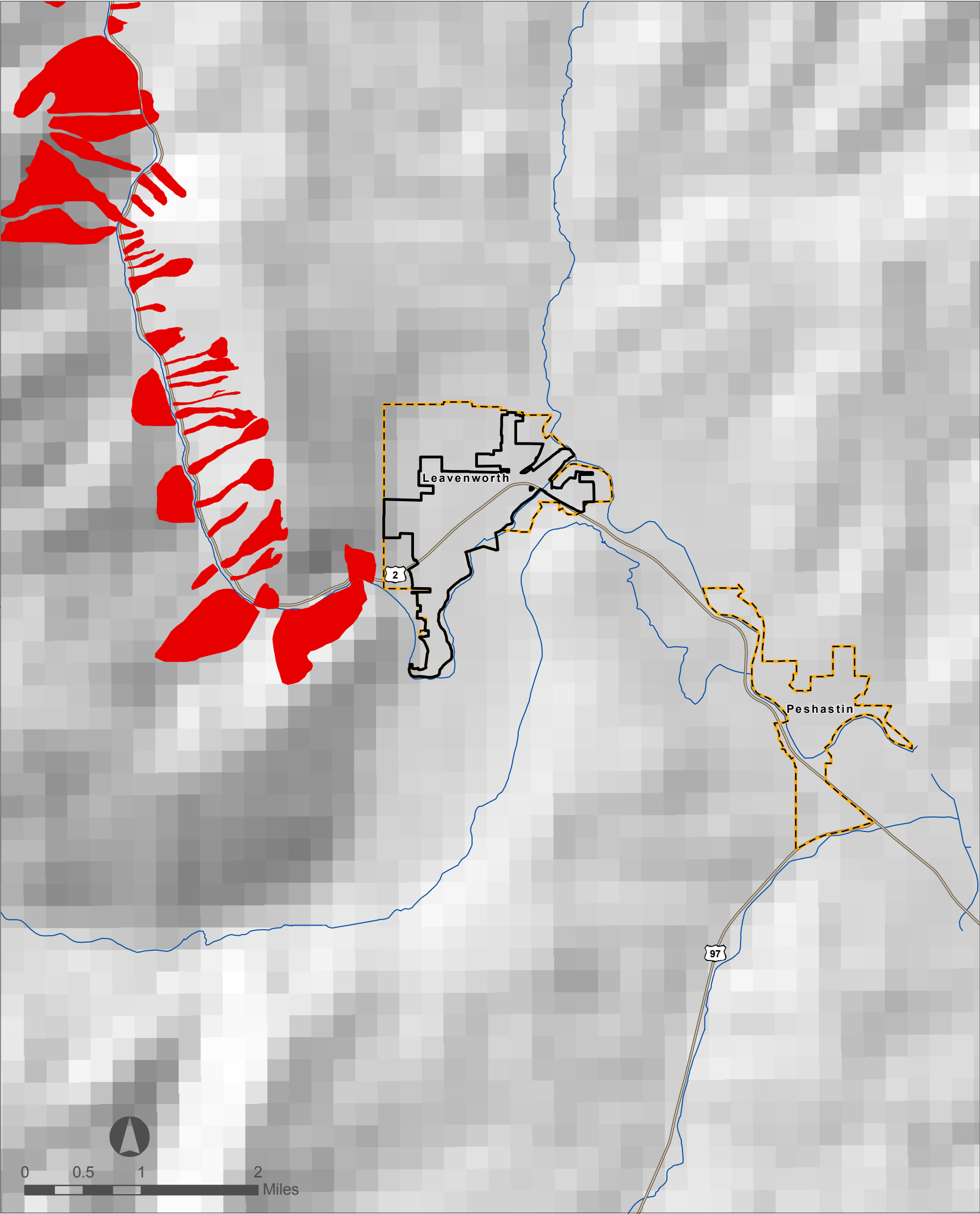




DRAFT

# AVALANCHE AREAS

## CHELAN COUNTY MULTI-JURISDICTION NATURAL HAZARD MITIGATION PLAN 2010



The information included on this map has been compiled for Chelan County from a variety of sources and is subject to change without notice. Chelan County and its Consultants make no representations or warranties, express or implied, as to accuracy, completeness, timeliness, or rights to the use of such information. Chelan County and its Consultants shall not be liable for any general, special, indirect, incidental, or consequential damages including, but not limited to, lost revenues or lost profits resulting from the use or misuse of the information contained on this map.

Data Source: Chelan County, WSDOT.

October, 2010.  
The Watershed Company.

MAP LEGEND

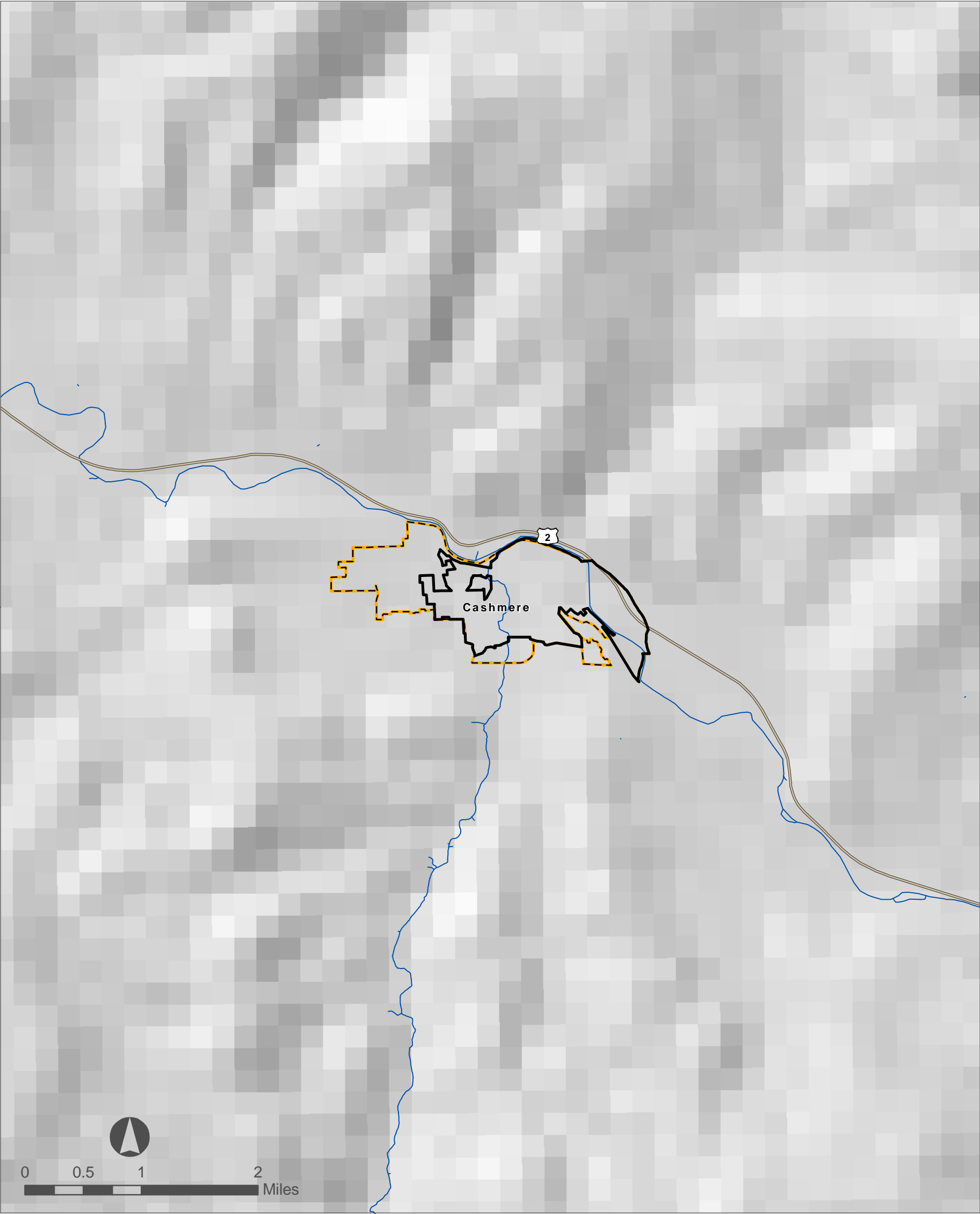
Stevens Pass Avalanche Areas\*

Tumwater Avalanche Areas\*

Washington Pass Avalanche Areas\*

Highway

\* Data is collected by WSDOT for road maintenance purposes solely. It does not warrant past or current conditions, or cautionary nature of any location. Information is shown as reference only.



The information included on this map has been compiled for Chelan County from a variety of sources and is subject to change without notice. Chelan County and its Consultants make no representations or warranties, express or implied, as to accuracy, completeness, timeliness, or rights to the use of such information. Chelan County and its Consultants shall not be liable for any general, special, indirect, incidental, or consequential damages including, but not limited to, lost revenues or lost profits resulting from the use or misuse of the information contained on this map.

Data Source: Chelan County, WSDOT.

October, 2010.  
The Watershed Company.

- MAP LEGEND
- Stevens Pass Avalanche Areas\*
  - Tumwater Avalanche Areas\*
  - Washington Pass Avalanche Areas\*
  - Highway

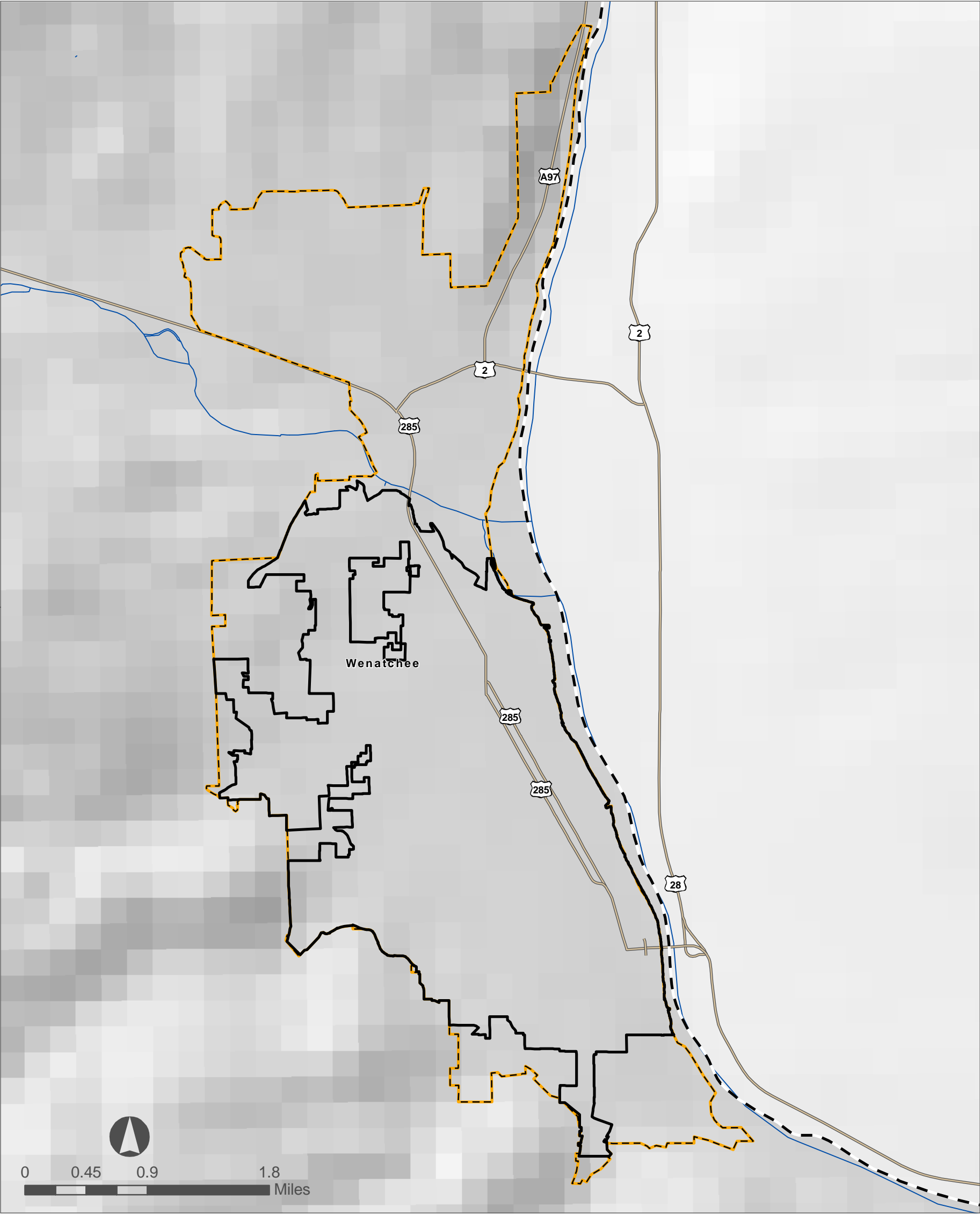
\* Data is collected by WSDOT for road maintenance purposes solely. It does not warrant past or current conditions, or cautionary nature of any location. Information is shown as reference only.



# AVALANCHE AREAS

## CHELAN COUNTY MULTI-JURISDICTION NATURAL HAZARD MITIGATION PLAN 2010

DRAFT



The information included on this map has been compiled for Chelan County from a variety of sources and is subject to change without notice. Chelan County and its Consultants make no representations or warranties, express or implied, as to accuracy, completeness, timeliness, or rights to the use of such information. Chelan County and its Consultants shall not be liable for any general, special, indirect, incidental, or consequential damages including, but not limited to, lost revenues or lost profits resulting from the use or misuse of the information contained on this map.

Data Source: Chelan County, WSDOT.

October, 2010.  
The Watershed Company.

- MAP LEGEND**
- Stevens Pass Avalanche Areas\*
  - Tumwater Avalanche Areas\*
  - Washington Pass Avalanche Areas\*
  - Highway

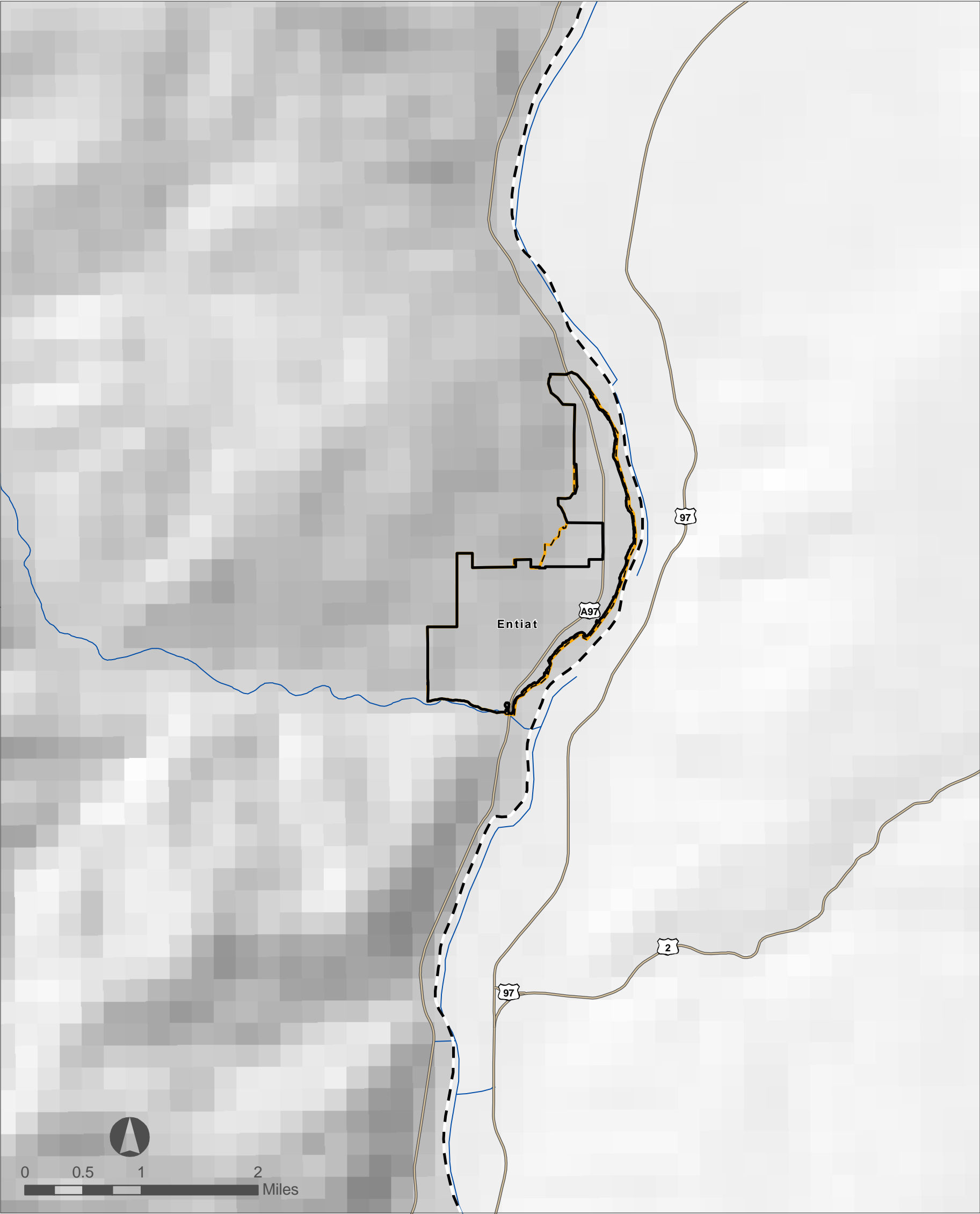
\* Data is collected by WSDOT for road maintenance purposes solely. It does not warrant past or current conditions, or cautionary nature of any location. Information is shown as reference only.



DRAFT

# AVALANCHE AREAS

## CHELAN COUNTY MULTI-JURISDICTION NATURAL HAZARD MITIGATION PLAN 2010



The information included on this map has been compiled for Chelan County from a variety of sources and is subject to change without notice. Chelan County and its Consultants make no representations or warranties, express or implied, as to accuracy, completeness, timeliness, or rights to the use of such information. Chelan County and its Consultants shall not be liable for any general, special, indirect, incidental, or consequential damages including, but not limited to, lost revenues or lost profits resulting from the use or misuse of the information contained on this map.

Data Source: Chelan County, WSDOT.

October, 2010.  
The Watershed Company.

MAP LEGEND

Stevens Pass Avalanche Areas\*

Tumwater Avalanche Areas\*

Washington Pass Avalanche Areas\*

Highway

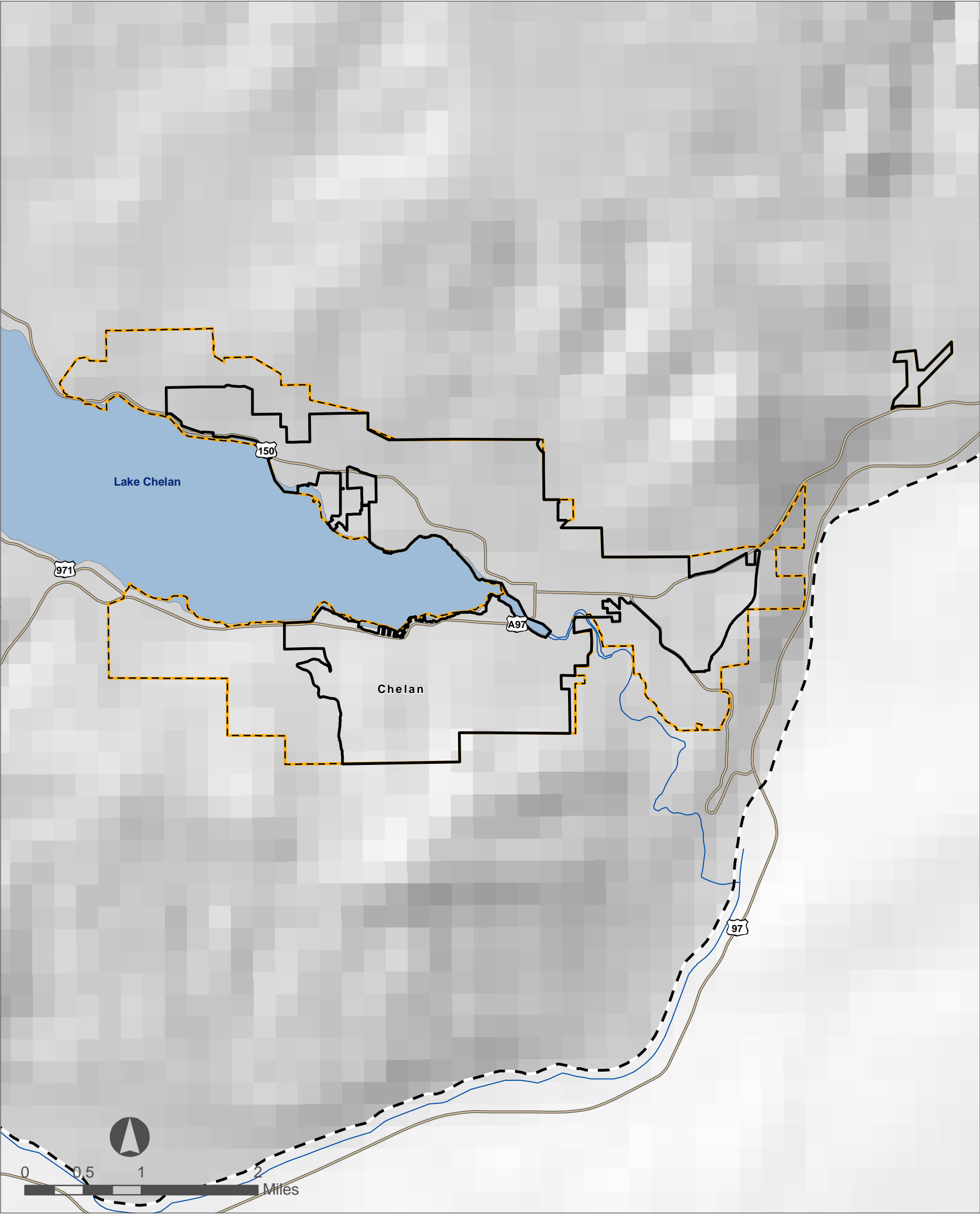
\* Data is collected by WSDOT for road maintenance purposes solely. It does not warrant past or current conditions, or cautionary nature of any location. Information is shown as reference only.



# AVALANCHE AREAS

CHELAN COUNTY MULTI-JURISDICTION NATURAL HAZARD MITIGATION PLAN 2010

DRAFT



The information included on this map has been compiled for Chelan County from a variety of sources and is subject to change without notice. Chelan County and its Consultants make no representations or warranties, express or implied, as to accuracy, completeness, timeliness, or rights to the use of such information. Chelan County and its Consultants shall not be liable for any general, special, indirect, incidental, or consequential damages including, but not limited to, lost revenues or lost profits resulting from the use or misuse of the information contained on this map.

Data Source: Chelan County, WSDOT.

October, 2010.  
The Watershed Company.

## MAP LEGEND

- Stevens Pass Avalanche Areas\*
- Tumwater Avalanche Areas\*
- Washington Pass Avalanche Areas\*
- Highway

\* Data is collected by WSDOT for road maintenance purposes solely. It does not warrant past or current conditions, or cautionary nature of any location. Information is shown as reference only.