



LAKE CHELAN COLLABORATIVE

MEETING 4 – LAKE CHELAN WATERSHED RESTORATION PLAN

JUNE 3, 2026

1:00 PM TO 4:00 PM



Welcome and Overview

Meeting Objectives

- Provide a brief AIS subcommittee update.
- Provide a recap of what we heard from meeting #3, updates made to the LCWRP outline, and approve the new land acknowledgement language for the LCC Operating Principles.
- Review and discuss the draft technical presentation approach/schedule and project matrix.
- Identify questions for the water supply topic for the September meeting.
- Technical presentations on CPUD FERC License and the recent DDT study.
- Recap decisions made and next steps.

Meeting Agenda

Agenda Item

Brief AIS Subcommittee Update

Watershed Restoration Plan Outline and LCC Workplan

Lake Chelan FERC License

BREAK

Lake Chelan DDT Study

Wrap Up & Timely Topics

Introductions and Overview

Share:

- **Name and affiliation**
- **What is your favorite way to interact with water in the summer?**

March Meeting Recap

- Discussed Issues Prioritization and LCC Workplan, and ideas for future speakers for issue topics
- Detailed discussion around fish habitat restoration topic.
- Watershed plan outline and feedback.
- Presentation on communication and outreach plan approach.
- Update on the Roses Lake Cyanobacteria Management Plan.

Aquatic Invasive Species (AIS) Subcommittee Update

NATE HOUGH-SNEE, MEADOW RUN ENVIRONMENTAL

AIS Subcommittee Update

- *AIS Watercraft Inspection Program*
 - April Open House - completed
 - Draft AIS Watercraft Inspection Program Alternatives Analysis – available today for review; comments due **Wednesday, June 17, 2026**.
 - Appendix to AIS Management Plan
- *AIS Management Plan Draft*
 - Available early-July 2026 for AIS Subcommittee review ahead of September 2026 LCC/AIS Subcommittee Meetings
 - Appendix to Lake Chelan Watershed Restoration Plan
- **Field Trip tomorrow! (June 4, 2026)**

Watershed Restoration Plan Outline and LCC Workplan

KELSEY MACH, ASPECT

Land Acknowledgement Language

- Operating principals included in meeting packet
- Reviewed and approved by Colville Tribes

The Lake Chelan Collaborative wishes to acknowledge that the Lake Chelan Watershed is within the traditional homeland of indigenous peoples who have resided in this area since time immemorial, including the Confederated Tribes of the Colville Reservation ščəl'ámxəx^w (Chelan), šntiyatk^{wəx^w} (Entiat), and sp'ałmul'əx^{wəx^w} (Methow) Tribes. We share their waters, their land, and their mountains.

Feedback on Watershed Plan Outline

Updated LCWRP Outline included in meeting packet

Feedback:

- Add nexus to climate change
- Include ongoing efforts by LCRI and others including monitoring work
- Add a section that focuses on projects aligning specifically with WaterSMART funding opportunities
- Summarize previous plan
- Include information on “readiness to proceed” for each project
- Remove Lake Chelan Fisheries Forum as ongoing work, and instead discuss in potential funding section.

Tentative LCC Workplan

Included in meeting packet

- Outline of technical presentation topics/presenters for future LCC meetings
- Presentations are intended to guide the development of the LCWRP
- Each presentation should generally follow similar structure:
 - Summarize 2012 plan recommendations and status (where relevant)
 - Current understanding / status of issue
 - Knowledge gaps
 - Group discussion of goals and desired outcome, and possible strategies/projects
- Prior meeting will be used to narrow in on specific questions and focus of presentations

Issue	Votes
Aquatic invasive species proactive management and control	24
Nutrient loading and nearshore algal accumulations on Lake Chelan	20
Long term water supply	18
Fish habitat restoration	16
Forestry management, wildfire prevention and impacts to water quality	15
Fish populations - Bull Trout Reintroduction, Kokanee, land locked Chinook	12
Recreational access	11
DDT and relic toxics in fish from ongoing agricultural drainage	10
Land use change management (Generally)	10
Recreational impacts (BTEX, wave generation, noise, trash accumulation)	9
Microplastics and emerging toxics (e.g. PFAS)	8
Lake stratification/Lake dynamics/Lake water temperature	7
Water fowl populations and pathogens (e.g. swimmers itch)	7
Roses Lake nutrient impacts/algal blooms	6
ESA Listed or Other Species/ Reintroduction (Western Gray Squirrels, Beavers)	4
Cultural resources impact	3
Irrigation district consolidation	1

Topic Category	Meeting Technical Topic	Lead/Presenter (Tentative)	Meeting
FERC License	CPUD Lake Chelan FERC License/ Lake Chelan Fisheries Forum	Alene Underwood (CPUD)	Jun-26
Recreational Impacts	Strategic Dock Plan + specifics on Domke and Safety Harbour docks	Holly Krake (USFS)	Jun-27
Wildfire Prevention	2026 Wildfire Season Outlook	Holly Krake (USFS)	Jun-27
Water Supply/Agriculture	Lake Chelan Coordinated Cost Reimbursement Update	Andrea Reyes (Ecology)	Jun-27
Water Quality - Relic Toxics in Fish	DDT study update	Clay Patmont (Anchor QEA)	Jun-26
Water Supply/Agriculture	Water Rights/Water Supply: Panel discussion on water supply planning from the main applicants.	Dan Haller (Aspect), Andrea Reyes (Ecology), Applicants: CCNRD, LCRD, City of Chelan	Sep-26
Fishery Health/ Management	2007 Fisheries Plan; Current State of Fisheries Management in Lake Chelan; Funding Opportunities; Long Term Vision	Travis Maitland (WDFW)	Sep-26
Water Quality - Nutrient Loading and Algal Accumulations	LCRI Periphyton Study Findings	Phil Long (LCRI)	Sep-26
Water Quality/ Fishery Health	Holden Mine Mitigation update	Molly Hanson (USFS)	Dec-26
AIS Management	AIS Management Plan and Watercraft Inspection Plan	Nate (Meadow Run) / Justin Bush (WDFW)/ Stephen Lesky (CCNRD)	Dec-26
Cultural Resources	Traditional Uses of Lake Chelan	Patrick Sawyer / Darnell Sam (CCT)	Dec-26
Forestry Management	20-year forest health strategy for the Lake Chelan area	Scott McFarland (DNR)	Mar-27
Forestry Management/ Wildfire Prevention	The status of forest health and wildfire resilience in Lake Chelan, a panel discussion. Group to provide specific questions in advance.	Lisa Dowling (WDFW) / Scott McFarland (DNR) / Holly Krake, David W Petersen, or David L Petersen (USFS) / State Parks? / NPS?	Mar-27
Recreational Impacts	Chelan Parks & Recreation System Master Plan	Audrey Cooper (Chelan Parks)	Jun-27
Agriculture	Chelan County Voluntary Stewardship Program	Stephen Lesky (CCNRD)	Jun-26
Funding	Bureau of Reclamation WaterSMART Funding Opportunities	Gina Hoff (USBR)	Jun-27

Group Discussion: Water Supply Planning

September meeting is intended to include presentations and a panel discussion on water supply planning from Aspect, Ecology and major water users (City of Chelan, Chelan County, Lake Chelan Reclamation District). Focus will be on the Lake Chelan Coordinated Cost Reimbursement Program and future water supply needs and strategies.

Discussion point:

- When you think about the challenges facing the Lake Chelan Basin around water supply/water rights and, ultimately, selecting potential projects/recommendations that help mitigate these issues as part of the LCWRP, **what information would be helpful for you to hear about from the presenters?**

Group Discussion: Fishery Health/Habitat

What did we hear last time?

- Interest in better understanding the state of fisheries management/2007 Lake Chelan Fishery Plan
- FERC License Fishery Forum work
- Limitations of fish habitat projects due to no legal requirement nexus and access issues
- 25-mile creek fish habitat channel project, and replacement of the concrete structure under the road which is a partial fish passage barrier and being funded by WDFW

Discussion Point:

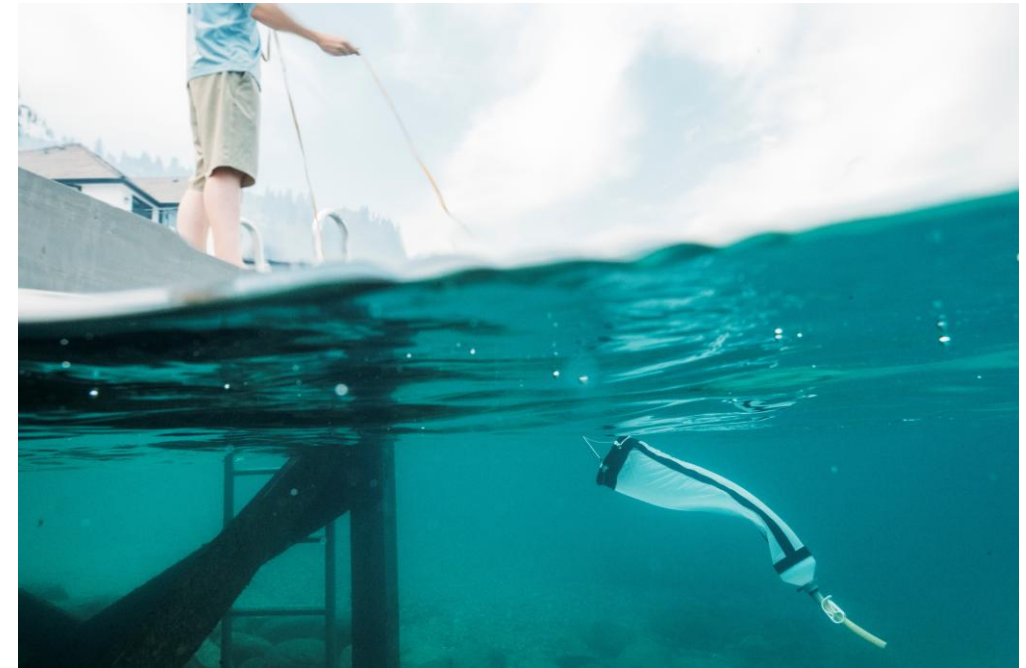
- Travis at WDFW will be presenting on general fisheries management in Lake Chelan. **Is there anything specific the group is interested in hearing from Travis?**

Group Discussion: Periphyton Study

- Follow on to water quality/nutrient loading “issue” discussed in December 2025 meeting
- First ongoing monitoring of phytoplankton and periphyton in Lake Chelan
- Identified which filamentous algal bloom (FAB) taxa occur in Lake Chelan including where and when
- Baseline data collection – 3 years

Discussion:

- **Confirm relevance to LCWRP and interest from the group to hear about this study?**



Project Matrix

- Goal is to populate the project matrix informed by LCC technical presentations and discussion
- Keeping inclusive and high-level for now
- Will be prioritized for developing recommendations in the LCWRP
- Details will be added and translated into a Detailed Implementation Plan, included with the LCWRP

Project Matrix

Includes:

- Issue Category/Title
- Project/Strategy
- Category (Data Gaps, Restoration)
- Readiness to proceed
- Barriers
- Sponsor/Lead
- Schedule
- Funding opportunities
- Feasibility considerations (cost, permitting, operational and admin requirements)

Project Matrix

Example 1:

- Issue Category/Title: Aquatic Invasive Species introduction
- Project/Strategy: Develop and implement Mandatory Watercraft Inspection Program
- Category: Restoration
- Readiness to proceed: Currently under feasibility phase.
- Barriers: Funding
- Sponsor/Lead: Chelan County Natural Resources Department, WDFW
- Schedule: 5 years
- Funding opportunities: NPS, WDFW, other
- Feasibility consideration: Requires source of reliable and ongoing funding for County staff

Project Matrix

Example 2:

- Issue Category/Title: Water Quality/BTEX and recreational impacts
- Project/Strategy: Encourage Lake Chelan Marina participation in Clean Marinas Program (currently only Lake Chelan Yacht Club Marina)
- Category: Restoration
- Readiness to proceed: Additional planning effort required.
- Barriers: Requires willingness from Marina managers, ability for Marina's to adopt and enforce BMPs and meet eligibility, knowledge of program
- Sponsor/Lead: Not Identified
- Schedule: TBD
- Funding opportunities: Not Identified
- Feasibility consideration: Requires ongoing management

Project Matrix

Example 3:

- Issue Category/Title: Waterfowl impact on lake water quality
- Project/Strategy: Public outreach and education campaign to remove waterfowl droppings on docks instead of washing into lake
- Category: Restoration
- Readiness to proceed: Additional planning needed
- Barriers: Requires public willingness
- Sponsor/Lead: Not Identified
- Schedule: TBD
- Funding opportunities: Not Identified
- Feasibility consideration: Champion and funding source needed

Group Discussion

Clarifying questions/reflections related to the project matrix?

Lake Chelan FERC License

ALENE UNDERWOOD, CPUD

BEN TRUSCOTT, CPUD

Lake Chelan
Hydroelectric Project
FERC No. 637
Overview

June 3, 2026

Lake Chelan
Collaborative
Meeting





Overview

- Introductions
- FERC License Process
- Stakeholders and Tribes
- License Requirements & Plans overview
- Q&A



FERC Licensing Process

- Engage stakeholders, Tribes, and resource agencies starting in 1998
- Identify issues and needs 1998-2000
- Prepare and submit license application 2001
- FERC conducts regulatory review including NEPA, ESA, NHPA, CWA 2002-2003
- Settlement Agreement 2003
- Receive FERC 50-year license 2006-2056



Public Utility District No. 1 of
Chelan County

Project No. 637-022

ORDER ON OFFER OF SETTLEMENT AND ISSUING NEW LICENSE

November 6, 2006

1. On March 28, 2002, Public Utility District No. 1 of Chelan County (Chelan PUD) filed an application for a new license pursuant to sections 4(e) and 15 of the Federal Power Act (FPA),¹ to continue operation and maintenance of the 48-megawatt (MW) Lake Chelan Hydroelectric Project No. 637 located on the Chelan River, near the City of Chelan, in Chelan County, Washington. The project occupies 465.5 acres of federal lands² administered by the U.S. Forest Service (Forest Service) and U.S. Department of the Interior, National Park Service (Park Service).³

2. On October 8, 2003, a settlement agreement (Agreement) was reached between Chelan PUD, Forest Service, Park Service, NOAA National Marine Fisheries Service (NMFS), United States Fish and Wildlife Service (FWS), Washington Department of Fish and Wildlife (Washington Fish and Wildlife), Washington Department of Ecology (Ecology), the Confederated Tribes of the Colville Reservation (Colville Tribes), American Whitewater, and the City of Chelan. On October 17, 2003, Chelan PUD, on behalf of the signatories, filed the comprehensive settlement agreement with the Commission requesting that the measures set forth in the proposed license articles in

¹ 16 U.S.C. §§ 797(e) and 808 (2000), respectively.

² The federal lands are in the Wenatchee National Forest and the Lake Chelan National Recreation Area of the North Cascades National Park. The Wenatchee Forest Reserve was established by Executive Order No. 825 on June 18, 1908. By Act of October 2, 1968, Pub. L. No. 90-554, Congress established the North Cascades National Park and designated the North Cascades National Recreation Area, the Lake Chelan National Recreation Area, and the Ross Lake National Recreation Area as components thereof.

³ Because the project occupies lands of the United States, section 23(b)(10) of the FPA, 16 U.S.C. § 817(1) (2000), requires the project to be licensed.

Stakeholders and Tribes

Settlement Signatories

Chelan PUD

USDA Forest Service

National Park Service

NOAA Fisheries

US Fish and Wildlife

Washington Department of Ecology

Washington Department of Fish and Wildlife

Confederated Tribes of the Colville Reservation

City of Chelan

American Whitewater Affiliation

- (1) **Lake Chelan Fishery Forum (LCFF).** The following entities are eligible for membership in the LCFF: WDFW, USDA Forest Service, NPS, USFWS, the Confederated Tribes of the Colville Reservation (CCT), the Yakama Nation (YN), WDOE, Chelan PUD, the Lake Chelan Sportsman's Association (LCSA), and the City of Chelan.
- (2) **Chelan River Fishery Forum (CRFF).** The following entities are eligible for membership in the CRFF: WDFW, USDA Forest Service, NPS, NOAA Fisheries, USFWS, CCT, YN, WDOE, Chelan PUD, LCSA, and the City of Chelan.
- (3) **Lake Chelan Recreational Forum (LCRF).** The following entities are eligible for membership in the LCRF: the USDA Forest Service, NPS, Washington State Parks and Recreation Commission, Washington Interagency Committee for Outdoor Recreation (IAC), Chelan PUD, City of Chelan, Manson Parks and Recreation Department, the Lake Chelan Recreation Association, and American Whitewater Affiliation.
- (4) **Lake Chelan Cultural Forum (LCCF).** The following entities are eligible for membership in the LCCF: the Washington State Office of Archeological and Historic Preservation (OAHP), the Washington State Parks and Recreation Commission, the NPS, the Bureau of Indian Affairs (BIA), the USDA Forest Service, CCT, YN, Chelan PUD, and the Lake Chelan Historical Society.
- (5) **Lake Chelan Wildlife Forum (LCWF).** The following entities are eligible for membership in the LCWF: WDFW, USDA Forest Service, USFWS, NPS, Chelan PUD, CCT, YN, the Wenatchee Sportsman's Association, LCSA, the NCW Mule Deer Foundation, the Foundation for North American Wild Sheep, the Audubon Society, and the National Wild Turkey Federation.



Settlement Agreement 2003

Chapter 1 – USFS Erosion Control*

Chapter 2 – NPS Erosion Control*

Chapter 3 – Large Woody Debris*

Chapter 4 – Stehekin*

Chapter 5 – USFS Survey Monument Locations

Chapter 6 – Fishery Management*

Chapter 7 – Chelan River*

Chapter 8 – Lake Level*

Chapter 9 – Wildlife

Chapter 10 – Historic Properties and Cultural

Chapter 11 – Recreation Resources*

Chapter 12 – Upper Columbia River Salmon and Steelhead

**relevant to Lake Chelan
Collaborative*





USFS Erosion Control Implementation and Erosion Monitoring and Maintenance Plan

- Purpose: Complete treatment and monitoring of 33 sites before 2056
- Funding provided to USFS annually to complete the work.
- Due to staffing shortages identified in 2020, execution obligation now with Chelan PUD to complete sites.
- No Forum; ongoing collaboration on site specific plans and treatment monitoring
- Status: 16 sites completed and 5 sites in progress.



NPS Erosion Control Plan

- Purpose: Treatment of 16 sites to be completed by 2056
- Funding provided to NPS annually to complete sites.
- No Forum; ongoing NPS progress reports provided to Chelan PUD on a 2-year cycle
- Status: 11 sites completed





Large Woody Debris (LWD)

- Purpose: use of LWD by WDFW for habitat projects and shoreline stabilization on private and public lands
- Funding available annually to WDFW
- No Forum; ongoing collaboration at annual agency meetings



Stehekin Area Implementation Plan

- Purpose: measures for monitoring reductions in dust emissions, establishing native riparian vegetation, and reducing non-native plant species.
- Funding provided to NPS annually implement various projects
- No Forum; ongoing progress reports provided to Chelan PUD
- Status: Final 5-year Dust report being submitted in 2026 and ongoing efforts with riparian vegetation.





Lake Chelan Fishery Plan

- Purpose: restore and enhance, where feasible, native fisheries in Lake Chelan and its tributaries, and to support the Lake's recreational sport fishery
- Funding provided to WDFW, USFS, NPS
- LC Fishery Forum
- Status: annual collaboration within Forum to discuss ongoing implementation efforts of the Lake Chelan Fishery Plan



Chelan River Biological Evaluation and Implementation Plan

- Purpose: restore and enhance Chelan River habitat and fish populations through flow management, habitat improvement, and biological monitoring.
- No funding provided for agencies as this is a Chelan PUD effort.
- Chelan River Fishery Forum
- Status: annual reporting and collaboration within Forum to discuss ongoing implementation efforts of the CRBEIP.



Lake Level

- Purpose: annual report to provide comparison of monthly and actual target lake levels, watershed forecasts, and other requirement objectives (spill, habitat channel, recreation).
- No funding provided to agencies as this is a Chelan PUD effort.
- No Forum; however, there is a specific list of entities and interested parties that receive, review, and provide comments on the annual report.
- Status: NA





Recreation Resources Management Plan

- Purpose: execute enhancements and modifications as indicated in Settlement Agreement and License.
- No funding provided to agencies as this is a Chelan PUD effort.
- LC Recreation Forum
- Status: NA



QUESTIONS?



Group Discussion

- Clarifying questions/reflections related to FERC license and/or the role of the Lake Chelan Fisheries Forum?
- Did the presentation prompt questions or topics for WDFW to consider for September presentation or other future LCC presentations?

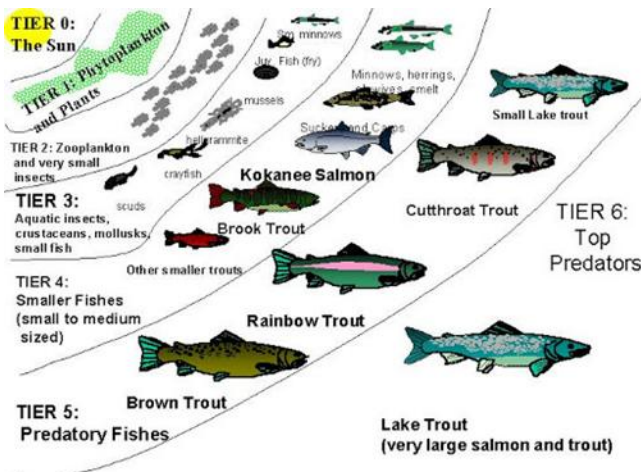
Lake Chelan DDT Study

CLAY PATMONT, ANCHOR QEA, LAKE CHELAN RESEARCH
INSTITUTE

CONTAMINANTS IN LAKE CHELAN

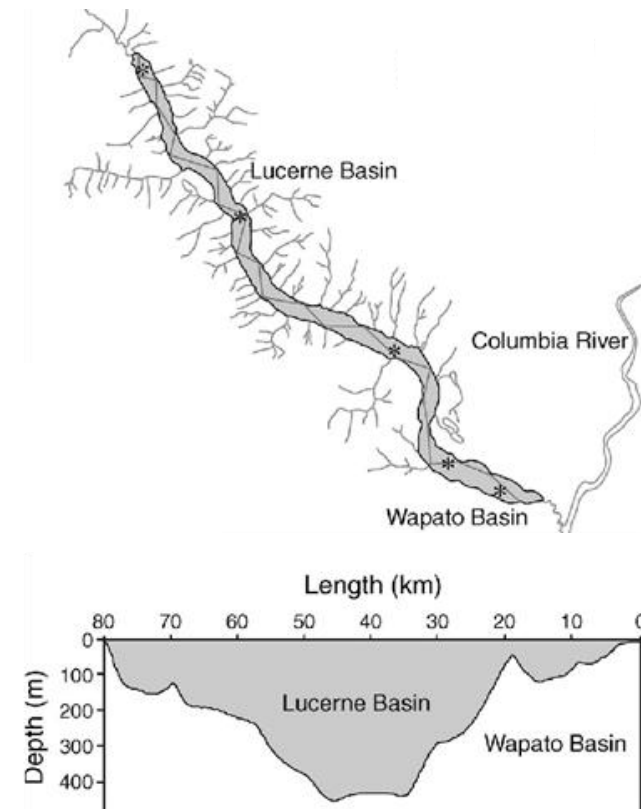


- **DDT (organochlorine pesticide developed in 1940s; banned in 1972)**
 - **Human health risk from consuming Lower Basin Lake trout (Mackinaw)**
 - Among the highest fish tissue DDT levels in North America
 - Lake water DDT (4,4'-DDE) concentration ~100X higher than Department of Ecology surface water quality criterion to protect fish consumption
 - Department of Health recommends no more than one meal per week of Lake trout (Mackinaw) consumption
 - No restriction on Burbot, Kokanee, and Rainbow trout consumption
 - **Low drinking water risk (below federal and state criteria)**
 - **Low wildlife risk (e.g., to fish-eating birds)**
 - **Low human health direct contact risk (e.g., to water, sediment, or soil)**
- **Low risk from other contaminants (e.g., mercury and PCBs)**



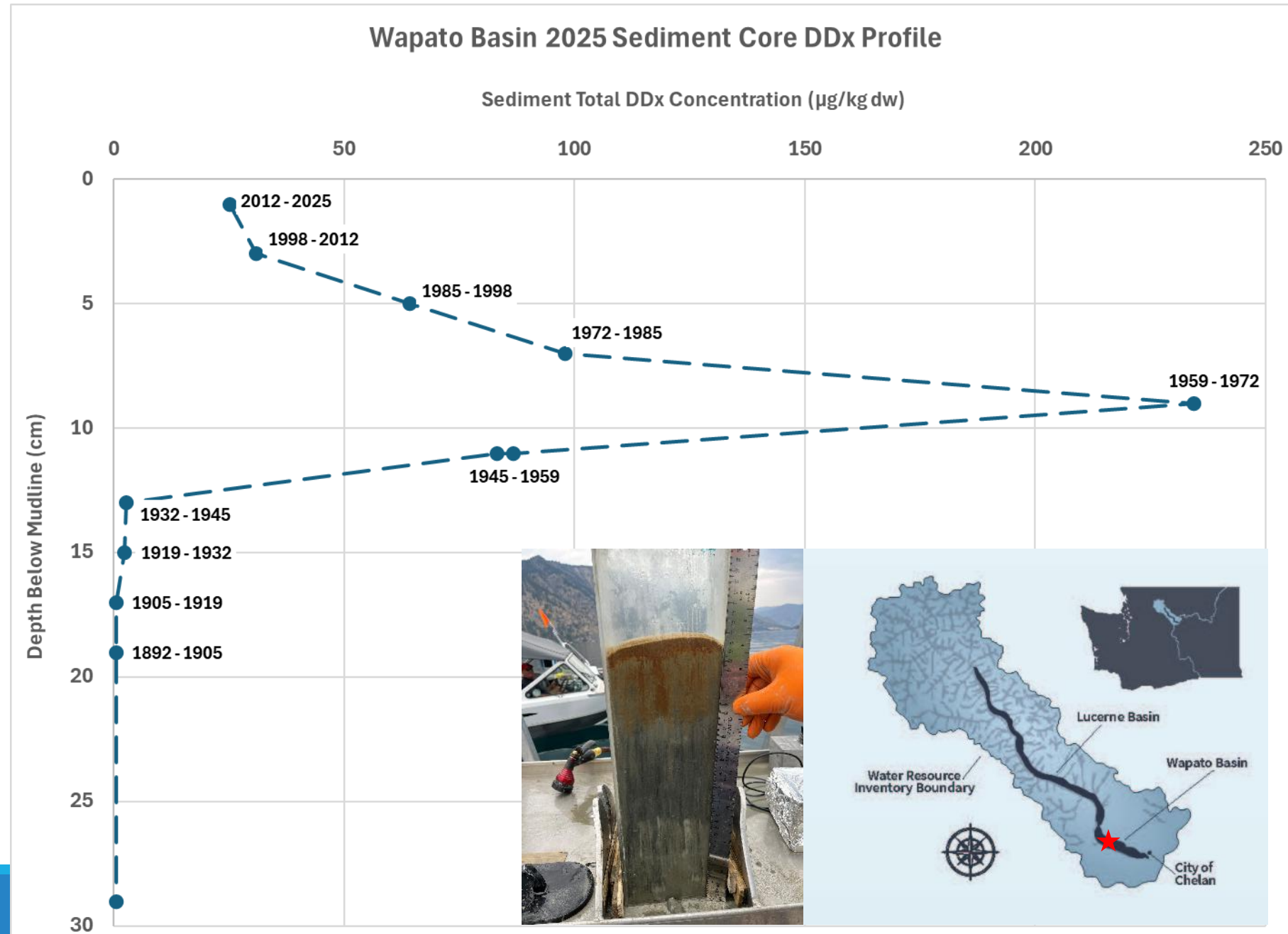
Lake Chelan DDT Study

- **Funded through Columbia River Basin Restoration Program agreement between Chelan County and Department of Ecology (EPA grant)**
- **Lake Chelan Toxics Source Control Demonstration Project objectives:**
 - **March 2025 to March 2026 sampling within Wapato Basin**
 - **Characterize sediment DDT release and recovery history**
 - **Characterize DDT flux from sediments into bottom water**
 - **Characterize seasonal DDT concentrations in surface and bottom water**
 - **Characterize orchard drainage DDT inputs**
 - **Develop an accurate Lake Chelan DDT mass balance to provide a framework for effective toxics source reduction strategies**
 - **Draft report currently being reviewed by Department of Ecology**



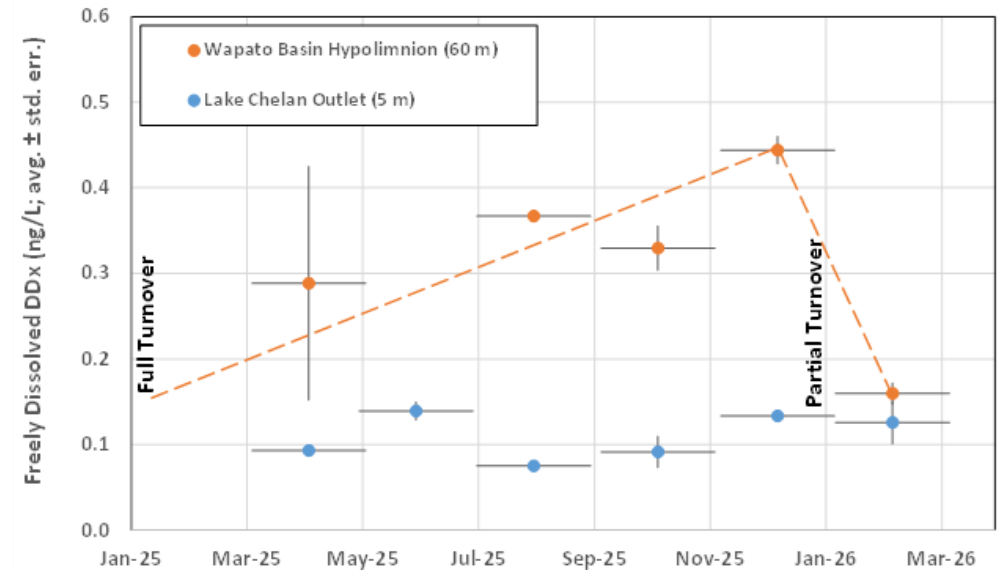
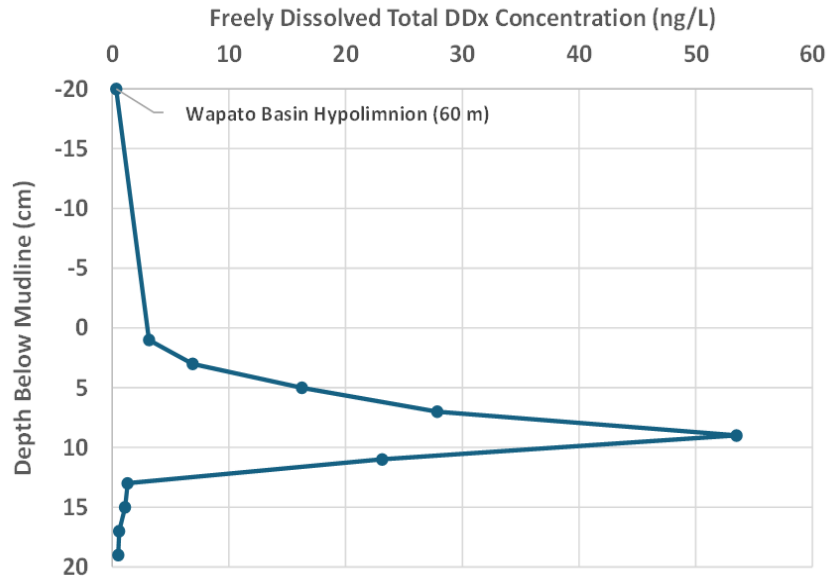
History of DDT Levels in Lake Chelan

- Net sedimentation rate: 0.15 cm/yr
- DDT levels increased from 1940 to 1972
- 5%/yr sediment DDT decline over past 50 years
- No change in Lake trout DDT levels since 2003



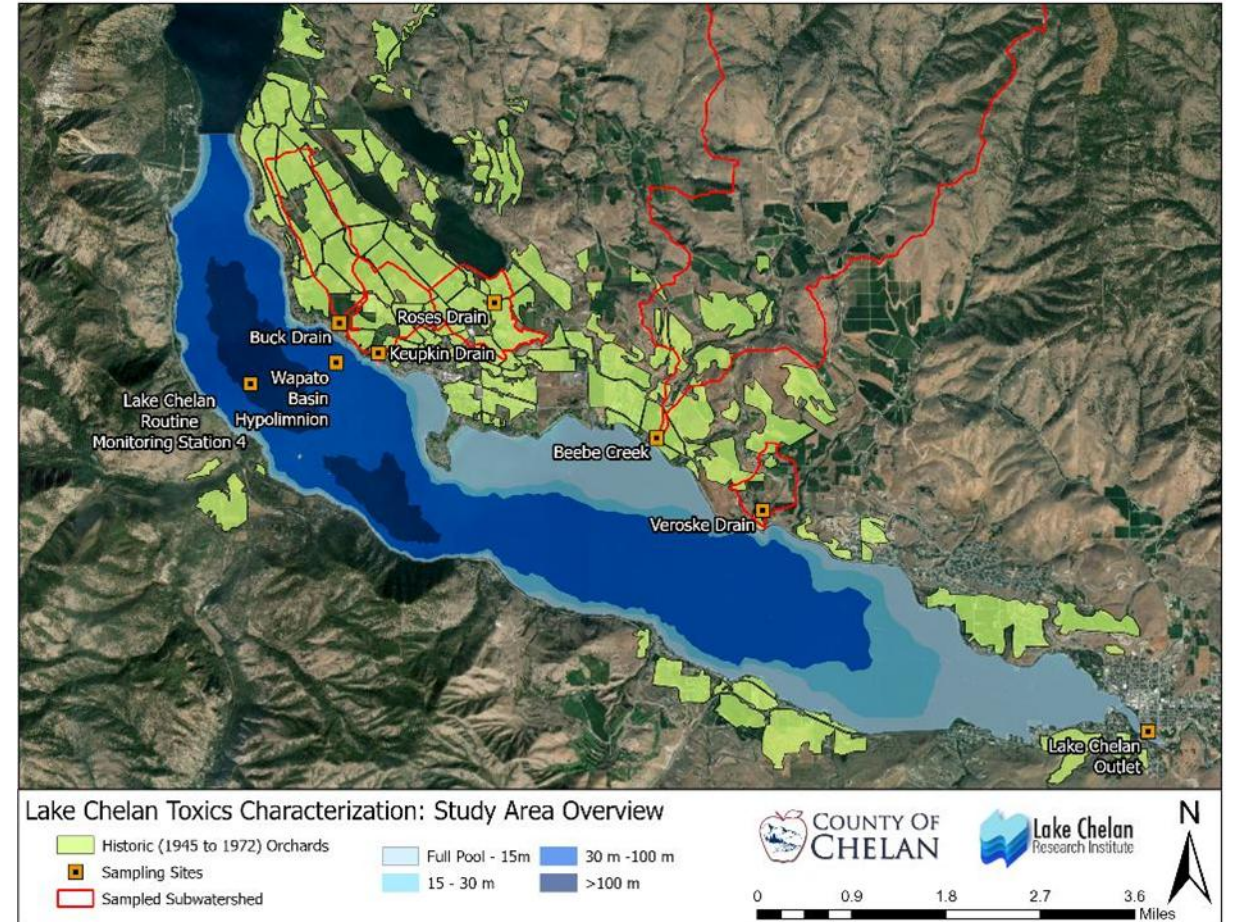
DDT Flux from Sediment to Bottom Water

- Legacy lake sediment still a source of dissolved DDT flux into bottom water
 - Surface sediment porewater DDT concentration 10X higher than bottom water (hypolimnion) levels
 - Progressive increase in bottom water DDT concentration between winter turnover (mixing) events
 - Bottom water isolated from surface water during spring-summer-fall stratification season



Orchard Drainage DDT Inputs

- **~30,000 kg DDT in orchard soils**
 - 5,300 acres of historic orchards
 - Primarily in Wapato Basin
- **6 orchard drainage sampling sites**
 - Consistent discharge and DDT levels measured at each sampling site
 - Higher DDT levels in sampling basins with more historic orchards
 - DDT mass in historic orchard soils more than 500,000X higher than annual load
 - Very slow decline/degradation over time



Surface Water DDT Mass Balance (2025)

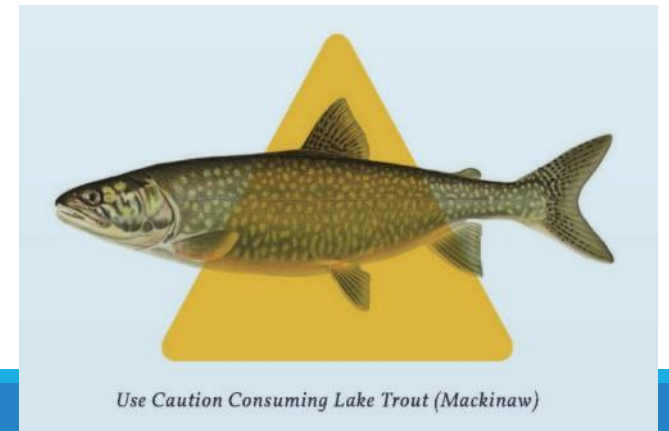
- **March to November stratification/growing season**
 - **Season when DDT primarily enters Lake Chelan food chain**
 - DDT largely does not enter food chain during winter turnover
- **Sediment porewater flux ~40% of effective DDT load**
 - **Porewater flux projected to decline at ~5%/yr**
 - By ~2050, projected seasonal DDT flux of <10 grams
- **Orchard drainage inputs ~60% of effective DDT load**
 - **Drainage inputs projected to continue for next century**
 - Very slow decline/degradation over time

Wapato Basin Epilimnion Inputs/Outputs	March to November DDT Load (grams)
Sediment Porewater Flux	34 ± 10 (40%)
Orchard Drainage Inputs	50 ± 17 (60%)
Total Inputs	84 ± 20
Total Outputs	90 ± 9
Residual	6 ± 22

Water Quality Issue Summary

▪ Reduce DDT loading

- **Continued DDT input into Lake Chelan is degrading lake water quality and leading to elevated concentrations in fish tissue that limit safe human consumption**
 - Primary risk is from consuming Wapato Basin Lake trout
 - Ongoing orchard drainage is primary DDT source to fish
 - DDT levels in fish unlikely to naturally decline without controls





Potential Actions





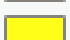

Potential Actions

- **2012 plan recommendations**
 - Evaluate irrigation drain treatment to reduce DDT and nutrients
- **Updated DDT (and nutrient) control action options**
 - Improve irrigation efficiencies
 - Recycle/reuse orchard drainage
 - Construct wetland treatment systems
 - Mitigation options for future development
 - Holden Mine restoration opportunity (maybe)
- **Possible amendment to Lake Chelan Toxics Source Control Demonstration Project Agreement**
 - Currently being discussed with Department of Ecology
 - Feasibility study and conceptual design/permitting of pilot project
 - Target completion by June 2027

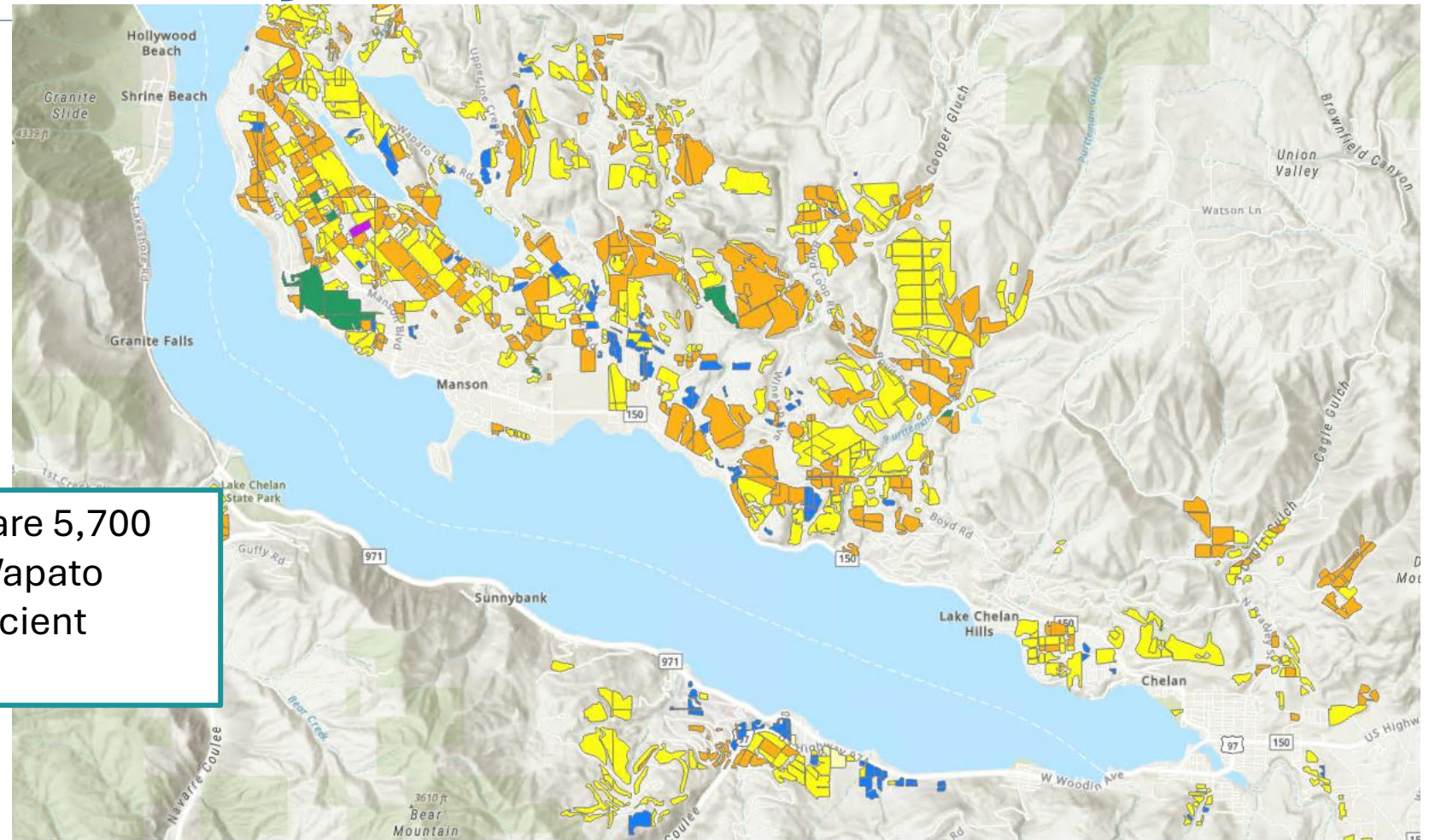


Irrigation Efficiency

Irrigation

-  Drip
-  Drip/Micro-Sprinkler
-  Drip/Sprinkler
-  Micro-Sprinkler
-  Sprinkler
-  Sprinkler/Wheel Line

According to WSDA, there are 5,700 irrigated acres within the Wapato Subbasin, 54% are less efficient sprinkler systems.



Group Discussion

- Clarifying questions/reflections related to the DDT Study and its key findings?
- What are the LCC goals as they relate to addressing DDT concentrations in Lake Chelan?
- What are strategies and/or actions for addressing these goals that could be included in the implementation plan?

Timely Topics

Outreach Update

- Frequently Asked Questions (Spanish and English)
- Survey (Spanish and English)
- First community event this evening!

Please share FAQ and survey!



Lake Chelan Watershed Plan

Join us for a community night to learn more about the natural resource issues facing Lake Chelan and how the community can get involved.

June 3rd 5:30-7:30 pm

**Lake Chelan Community Center
(103 Bighorn Way)**





Lake Chelan Coordinated Cost Reimbursement (LCCCR)



Andrea Reyes, Cost Reimbursement Coordinator
June 3, 2026

Update Overview

- Launch of the Lake Chelan CCR Program
- Lake Chelan Water Account Summary
- Lake Chelan Coordinated Cost Reimbursement Batch Update
- Request for Qualifications and Quotations (RFQQ)
- Next Steps After Bid Award

Launch of the Lake Chelan CCR Program (2019)

- **Program Start (2019)**
 - ❖ Ecology and Chelan County partnered to process pending Lake Chelan Reserve water right applications.
- **Option 1: Ecology/Consultant Path**
 - ❖ Consultants draft the ROEs and the water right permits.
 - ❖ Ecology will review the documents and process the applications.
 - ❖ Applicant will pay consultant costs and reimburse Ecology for staff time.
- **Option 2: Chelan County Domestic Use Path**
 - ❖ Lower-cost option for domestic, permit-exempt requests.
 - ❖ Processing may be faster.
- **Program Duration**
 - ❖ Applications will be processed until all pending requests are processed or Reserve water is fully allocated,

Lake Chelan Water Account Summary

Lake Chelan Agreement Water Account Summary	
Category	Totals
Reserve Total	65,000.0000
Allocated Water Right Quantity	54142.383
Estimate for existing permit-exempt uses (pre 4/1/2021)	124.0000
Post 4/1/2021 permit-exempt uses (from Chelan County)	41.548
Estimate for existing claims	5,500
Total Allocated Quantity	59807.931
65,000 AF Agreement Reserve Balance	5192.069
Initial Completion Date: 6/29/2017	
Last Updated: 10/01/2025	

Lake Chelan Coordinated Cost Reimbursement Batch Update

- Batch #1 – 6 applications processed
- Batch #2 – 9 applications processed
- Batch #3 – 8 applications processed
- Batch #4 – 9 applications processed



Request for Qualifications and Quotations (RFQQ)

- The RFQQ process for Water Resource's pre-approved Cost Reimbursement's Consultant list is complete.
- Prime contracts are currently being negotiated.
- Batch 5 job proposal is estimated to be released and awarded by the end of the year.

Next Steps After Bid Award

- Ecology will contact applicants to confirm and update contact information.
- Applicants will receive a Letter of Interest by email or mail.
 - ❖ Applicants will have 60 days to respond in writing with a decision on participating in the cost reimbursement process.
- As “yes” responses are received, draft Cost Reimbursement Agreements (CRAs) are prepared.
- Once all CRAs are signed and prepayments received, the Work Assignment(WA) is issued to the consultant.
- Work begins after the consultant and Ecology sign the WA.

Water Resources & Cost Reimbursement Links

- Ecology- Who We Are
 - ❖ [Water Resources - Washington State Department of Ecology](#)
- Water Rights Search
 - ❖ [Water rights search - Washington State Department of Ecology](#)
- Cost Reimbursement
 - ❖ [Cost reimbursement - Washington State Department of Ecology](#)
- Lake Chelan Coordinated Cost Reimbursement Program
 - ❖ [Lake Chelan CCR - Washington State Department of Ecology](#)



Questions?
Email:
andrea.reyes@ecy.wa.gov

Thank you





Forest Service
U.S. DEPARTMENT OF AGRICULTURE

Chelan Updates

June 2026

Lake Chelan Collaborative Meeting

Roads

- December 2025 back-to-back atmospheric rivers.
- Known impacts to Shady Pass and Grade Creek.
- Submitted for federal DOT funding. Favorable timeline is 2026 limited access, 2027 reconstruction.

Why it matters: Funding window closes 9 months post event (August/September). Please report any road damages (slides, washouts, etc.) with all the details you can to Matt Maher matthew.maher@usda.gov

Roads Repairs



Recreation

- **ePay:** No cash, scan and pay only for all fee areas.
- **Campgrounds:** All Chelan area campgrounds open.
- **Trails:**
 - Lakeshore Trail heavily damaged, quick response to reopen and alt. route ferry bump up to preserve access and tourism spending.
 - Trail “crew” = 2 people this year. Heavy blow-down everywhere.



Recreation

- **ePermits:** No cash, scan and pay only for all dock permits
- **Docks:**
 - Domke: Installed May 2026, fully repaired and ready for fun!
 - Safety Harbour: Being built brand new in Idaho, install summer 2026 pending favorable lake levels.
 - Refrigerator Harbour: Starting all required permitting in 2026.
 - 10 year strategic plan assessment for all 11 FS docks started May 2026.



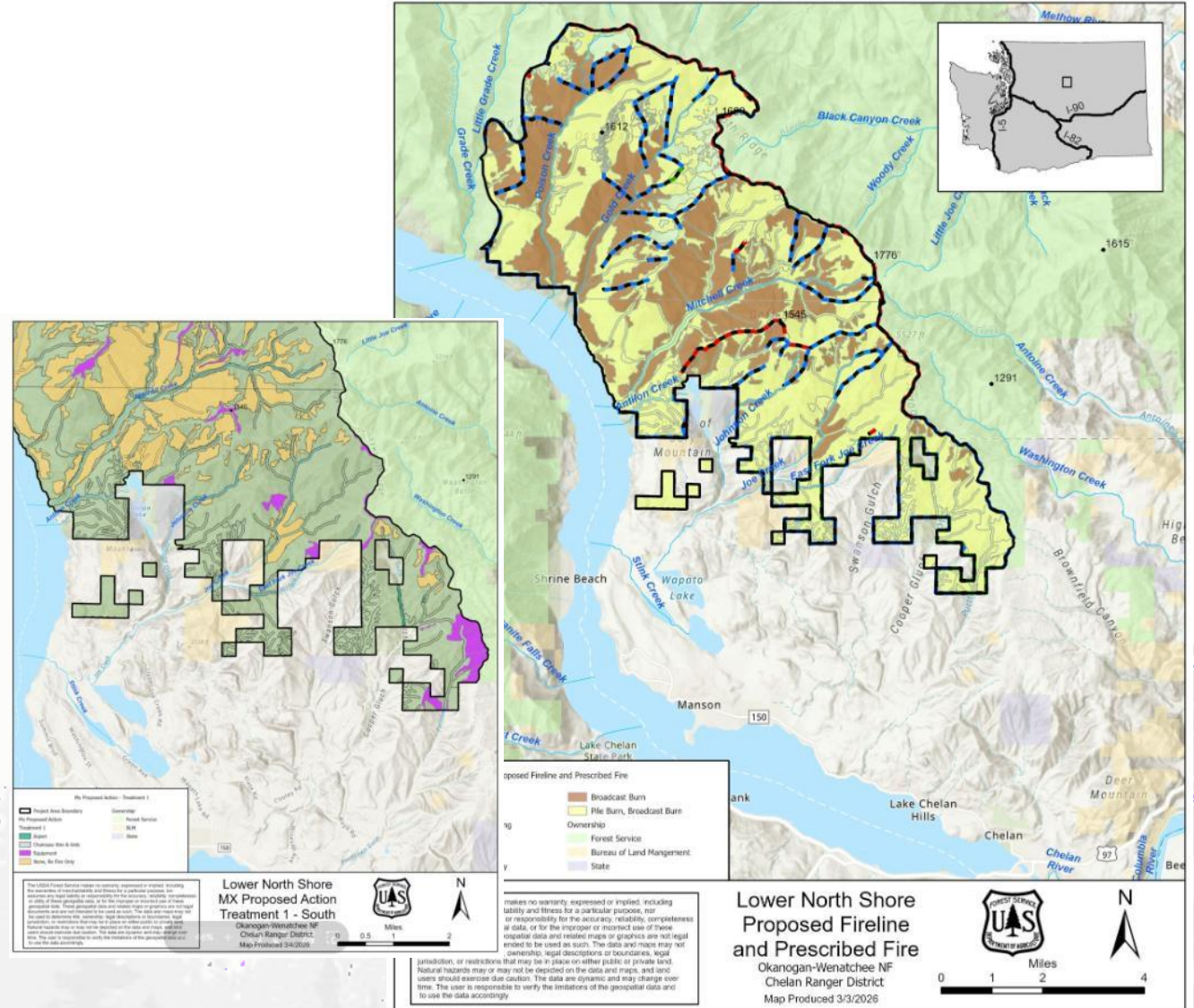
Active Forest Management

- **Personal Firewood:** new ePermits for 2026 + no load tags = better service.
- **Prescribed Fire:** 467 acres spring 2026 including cross boundary burning at Bear Mountain with TNC and CDLT partner organizations.



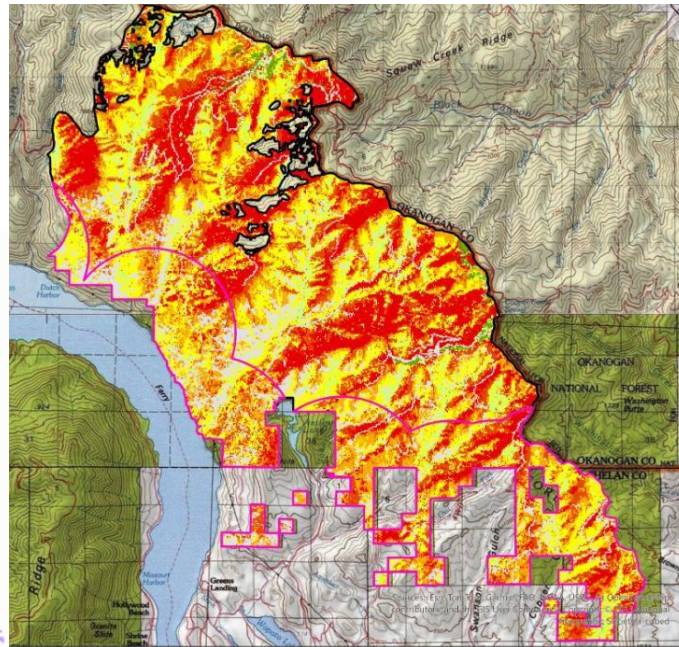
Active Forest Management

- **Lower North Shore Project:**
 - 30K acres prescribed fire and non-commercial thinning.
 - Up to 20% Rx annually.
 - Huge community protect buffer for Wapato, Manson, and Chelan communities.
 - Comment period summer likely June/July 2026.



Active Forest Management

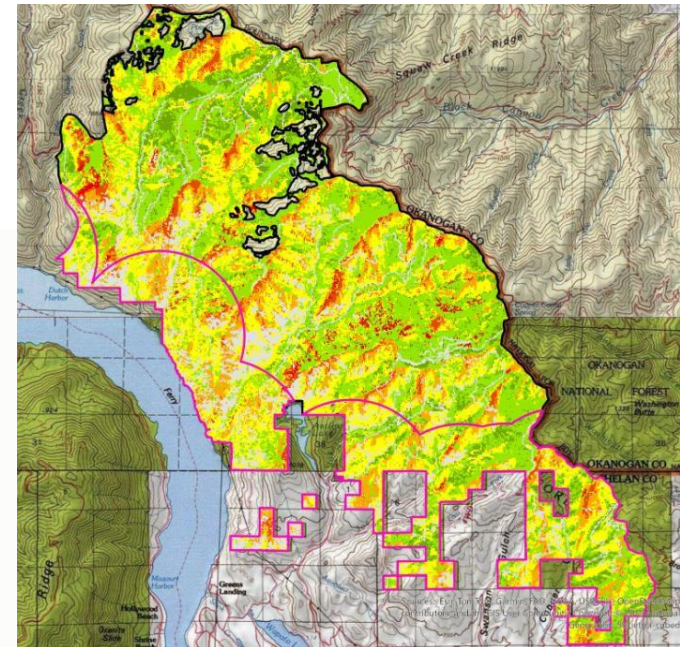
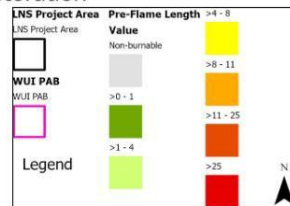
- Lower North Shore Project:



Lower North Shore Landscape Restoration

Pre-Treatment/Existing Conditions
Flame Length (feet): 90th percentile
weather inputs

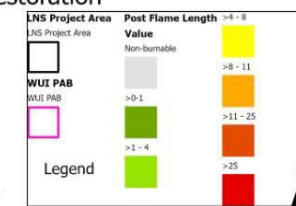
Scale 0 0.75 1.5 3 Miles A. Hall 5/13/2026



Lower North Shore Landscape Restoration

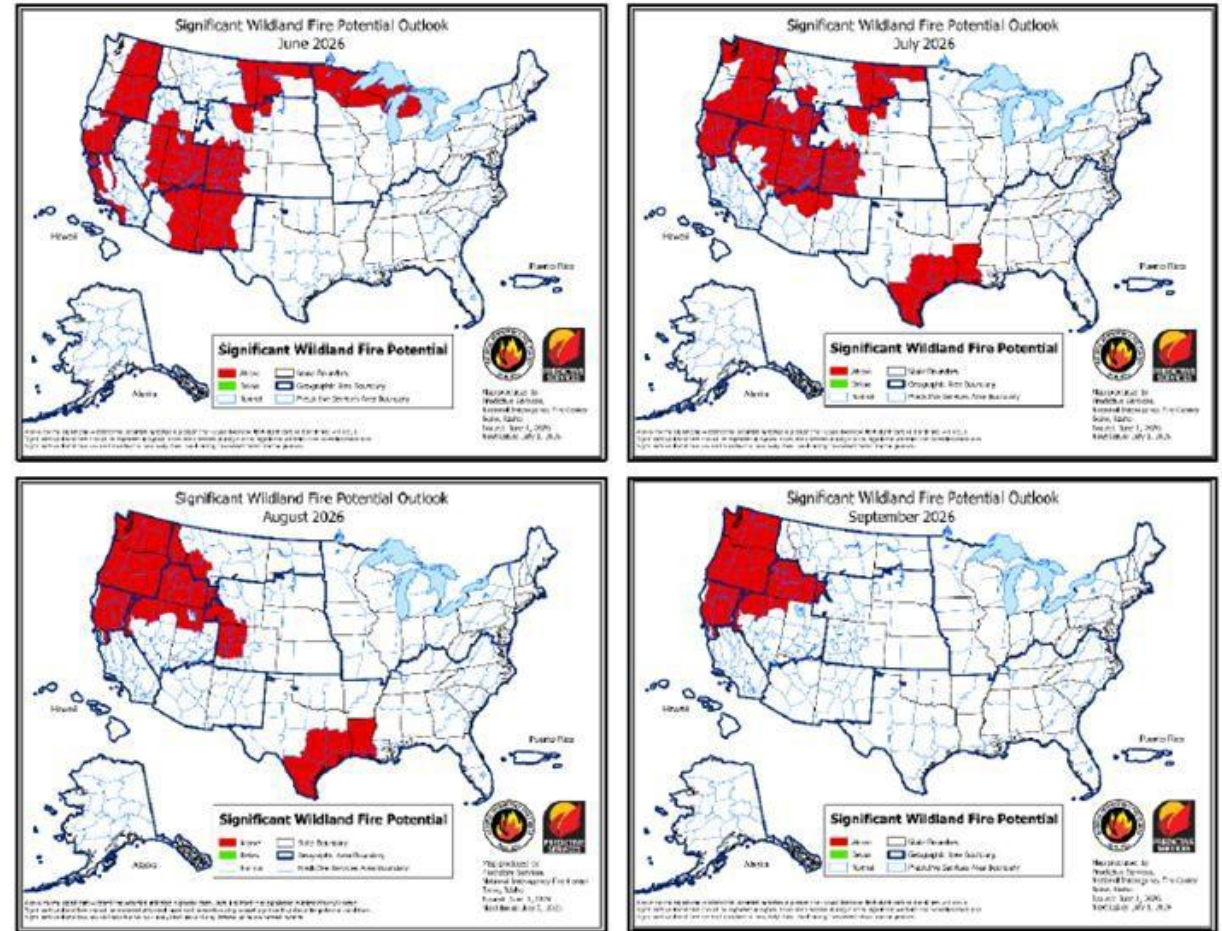
Post-Treatment Conditions Flame
Length (feet): 90th percentile
weather inputs

Scale 0 0.75 1.5 3 Miles A. Hall 5/13/2026



Wildfire Outlook

- Low snowpack = earlier fire season not necessarily intense fire season.
- 3-5 weeks ahead of normal.
- May = above normal temps + below normal rain. Signals show same pattern for Jun/Jul/Aug.
- Early trend along 2018 La Nina to El Nino shift and 2005 snowpack. Warm/drier will trend along 2015.
- Summer lightning, temperatures, and moisture matter most.



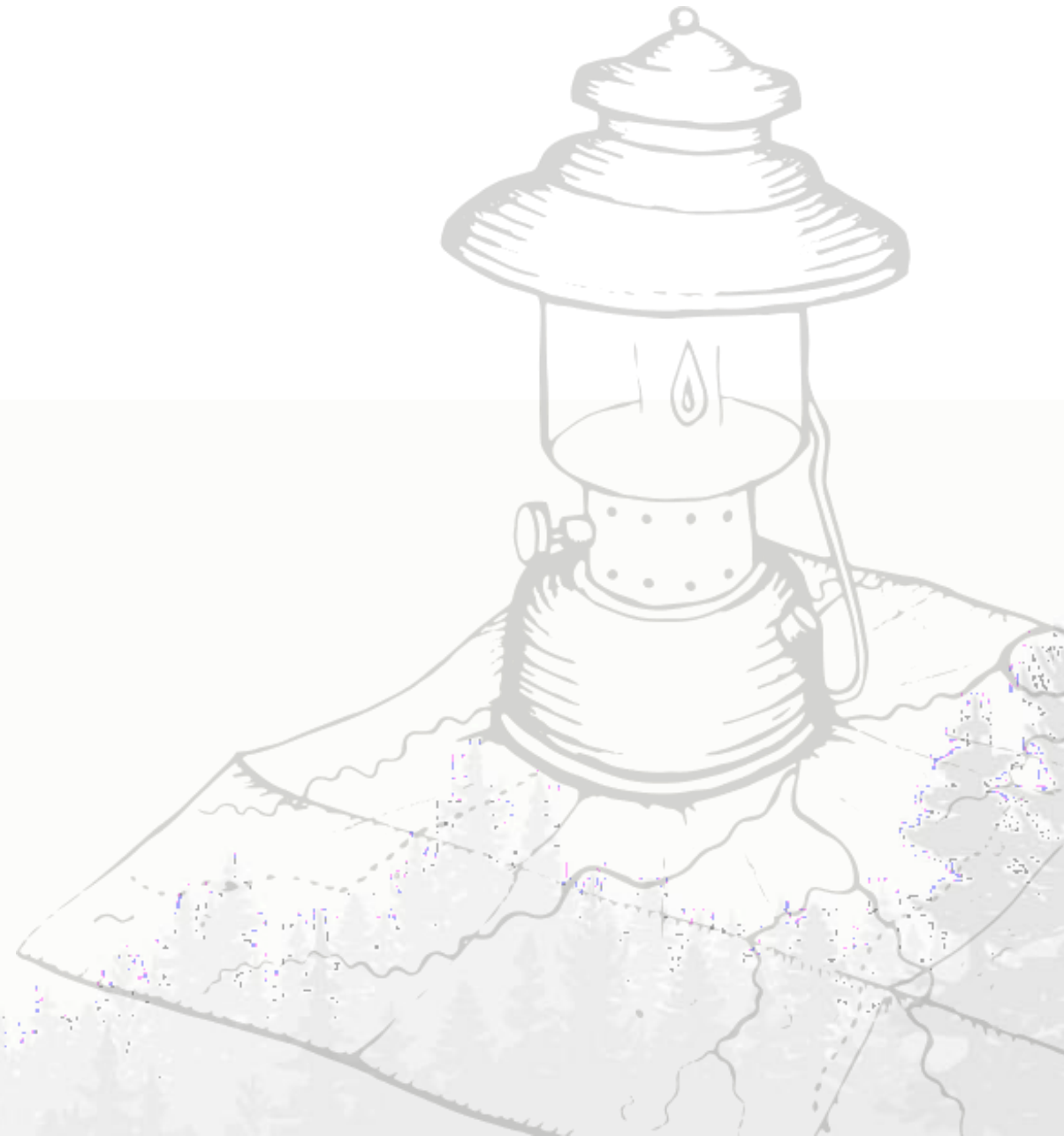
Wildfire Readiness



- 35 rappellers
- 4 helicopters; tankers at Moses Lake base in Ju
- 30 smokejumpers
- 5 20-person initial attacks crews
- 1 13-person special ops crew
- 9 engines
- 25 hotshots



Thank you!



Wrap Up

- Updates from the field
- Recap of decisions made and next steps
- **Next Meeting – September 23, 1-4pm**
 - Water supply technical presentation
 - Fishery health/management
 - LCRI Periphyton study (TBD)