

WENATCHEE WATERSHED COMMUNITY MEETINGS

*Learn about upcoming stream and forest restoration projects and
water resource management in your area.*



NEED MORE INFORMATION?

Please contact:

Mary Jo Sanborn

Chelan County Natural Resource Dept.

411 Washington Street, Suite 201

Wenatchee, WA 98801

509.667.6532

maryjo.sanborn@co.chelan.wa.us

Visit our website for meeting
information

www.co.chelan.wa.us/natural-resources



Community Meeting Schedule

Chumstick Creek

Wednesday, May 23rd, 6:30 pm to 8:30 pm
Leavenworth Fire Hall (FD #6)

Mission Creek

Wednesday, May 30th, 6:30 pm to 8:30 pm
Cashmere Riverside Center

Upper Wenatchee River (including Lake Wenatchee, Little Wenatchee River, White River and Chiwawa River)

Saturday, June 2nd, 10:00 am to noon
Lake Wenatchee Recreation Club

Lower Wenatchee River (Leavenworth to Columbia River)

Tuesday, June 12th, 6:30 pm to 8:30 pm
Cashmere Riverside Center

Peshastin Creek

Wednesday, June 13th, 6:30 pm to 8:30 pm
Dryden Fire Station (FD #6)

Nason Creek

Saturday, June 16th, 10:00 am to noon
Lake Wenatchee Fire Hall (FD #9)

Topics discussed at Watershed Community

Meetings will include:

- Updates on completed and proposed stream restoration projects
- Updates on water resources and forest management projects

CHUMSTICK CREEK COMMUNITY MEETING

- Welcome and Introductions
- Background on Salmon Recovery
- Implementation Priorities
- Completed and Ongoing Projects
- Future Efforts and Opportunities

Watershed Planning

Wenatchee River Watershed

- Planning Process began in 1999 under RCW 90.82
- Plan Approved in 2006 by local stakeholder group
- All 4 Elements Included: Water Quantity, Instream Flows, Water Quality and Habitat

Endangered Species Act (ESA)

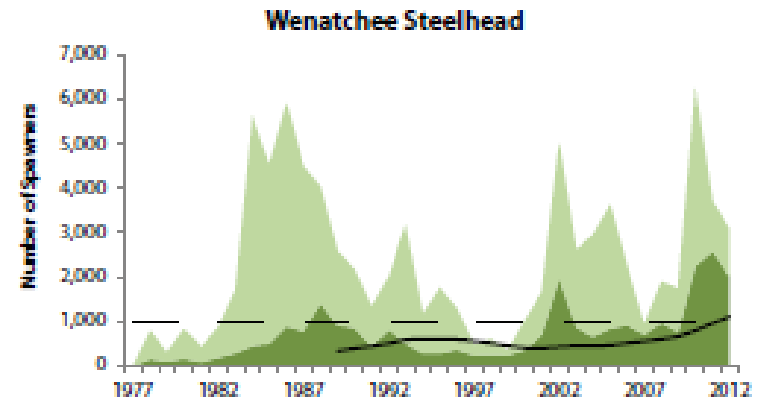
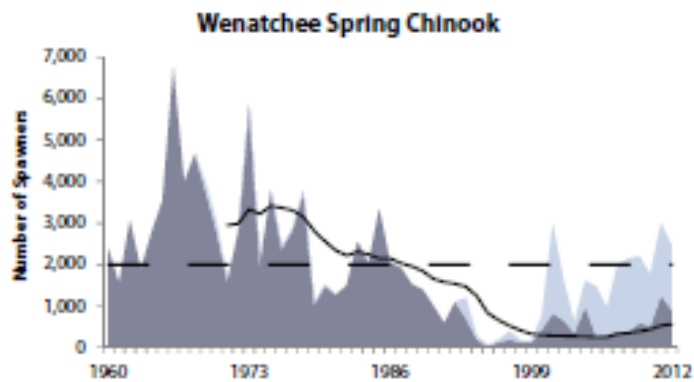
- Upper Columbia spring Chinook – 1999 endangered
- Upper Columbia steelhead – 1997 endangered, re-classified as threatened
- Bull Trout - threatened

ESA Efforts

- Development of federal recovery plans
- NOAA-Fisheries and US Fish and Wildlife Service
- Watershed Planning Units/Watershed Action Teams
- Upper Columbia Salmon Recovery Board

Spring Chinook and Steelhead

Salmon Productivity and Recovery Goals



■ Natural-Origin Adults
■ Hatchery-Origin Adults
— 12-Year Geometric Mean
- - Recovery Abundance Target

Implementation

- Meetings, coordination, partners
- Funding mechanisms
- Focus on restoring natural processes in high priority areas.



Wenatchee River Basin Salmon **Restoration Priorities**

Assessment Unit	Priority
Nason Creek	1
Upper Wenatchee River	2
Icicle Creek	3
Peshastin Creek	4
Lower Wenatchee River	5
Mission Creek	6
Little Wenatchee River	Not a priority at this time
White River	Not a priority at this time
Middle Wenatchee River	Not a priority at this time
Chumstick Creek	Not a priority at this time
Chiwawa River	Not a priority at this time

Wenatchee River Basin Salmon **Protection Priorities**

Assessment Unit	Priority
Nason Creek	1
White River	1
Upper Wenatchee River	1
Chiwawa River	1
Little Wenatchee River	2
Middle Wenatchee River	2
Icicle Creek	3
Lower Wenatchee River	3
Peshastin Creek	4
Mission Creek	4
Chumstick Creek	4

Chumstick Creek

Recommended Strategy

- Address fecal coliform and temperature issues
- Increase water availability for instream and out-of-stream uses; Implement instream flow rule
- Riparian restoration – plant native streamside vegetation/remove noxious weeds/livestock exclusion fencing
- Address Increased Sediment Loads
- Restore passage with culvert improvements

Wenatchee River Instream Flow Rule

- Balances community needs and fish needs
- Established 4 cfs reservation
- Provides reliable year-round domestic water for 20 years

New Water Policies

- WA Supreme Court cases
- *Swinomish, Foster, Hirst*
- Limits to Ecology's "toolbox"
- More local government responsibility

Chumstick Creek

Instream Flow Rule

- Interim Reservation of 0.043 cfs for domestic water use for three years (begins in 2008)
 - 2008-14 Debit: 50 new wells = 0.0293 cfs (68% of interim reserve)
 - 0.0137 cfs remaining in interim reserve
- Instream Flow Improvements are needed to access full reservation of 0.13 cfs

How are we addressing the reserve?

- Finetune Chumstick reserve accounting
- Evaluate groundwater connectivity
- Potential water purchase
- New wells: new county policies in 2019



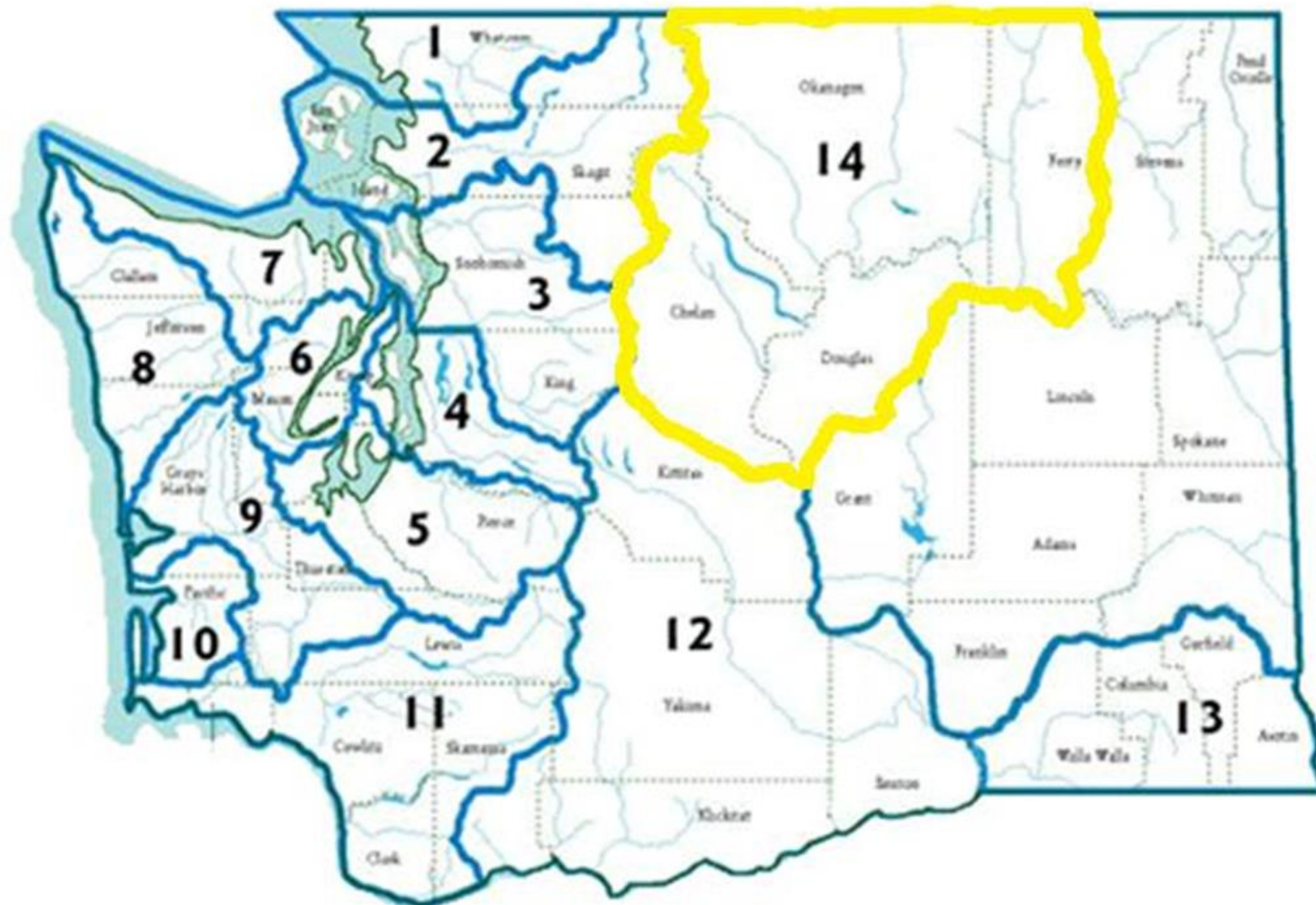
Cascade Columbia Fisheries Enhancement Group

Restoring native fish habitat through enhancement education and community engagement



Community Forum
May 23, 2018

Regional Fisheries Enhancement Group Boundaries



Active

Prospective

Completed

Updated 11/3/16

Driscoll Island Refuge

Driscoll Island Planting

FFPFP - Hinesline

FFPFP - Federson

FFPFP - Ames

Weir & Concrete Removal

FFPFP - Peterson

Burns Garrity

Methow Chewach Groundwater Study

Wolf Creek Diversion

Silver Phase 2

Geestman Riparian & Car Removal

Silver Phase 1

Chiwawa Nutrient Enh.

Twisp to Carlton RA

Judd Planting

WPPP

TT Planting & Sign

25 Mile Creek

Foster Creek

White R. LWD Attonement

White R. Assess.

White R. Culvert Removal

Stormy Creek Barriers

Clear Creek Planting

Entiat - Area C

FFPFP - Thomson

Little River Kiosk

FFPFP - Monigold

Tumwater Dam

FFPFP - Darlington

Salmon Cycle Landscape

Wenatchee Basin FPA

Peshastin Confluence Design



Who we are?



What do we do?

- Fish barrier removal
- Planting projects
- Habitat enhancement
- Studies and assessments
- Education & Outreach



The 4 “H’s” of decline

Harvest



Habitat



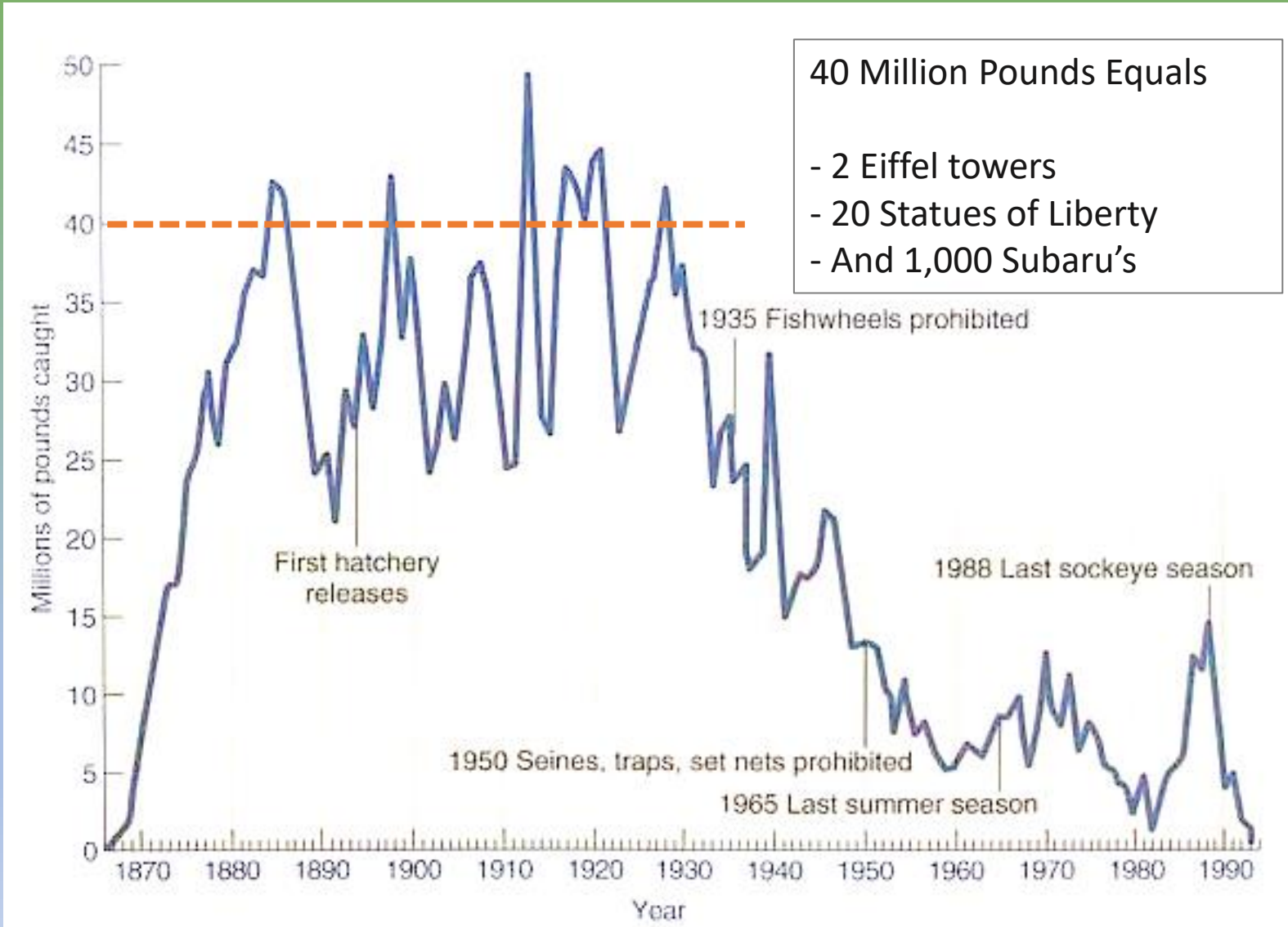
Hatcheries



Hydro



Columbia River Salmon Harvest 1865-1995



Endangered Species Act

- A recent national water quality survey of the nation's wadeable streams showed that 42% of the nation's stream length is in poor biological condition and 25% is in fair biological condition ([U.S. EPA, 2006](#)).
- Nearly 40% of fish in North American freshwater streams, rivers, and lakes are found to be vulnerable, threatened, or endangered; nearly twice as many as were included on the imperiled list from a similar survey conducted in 1989 ([Jelks et al., 2008](#)).

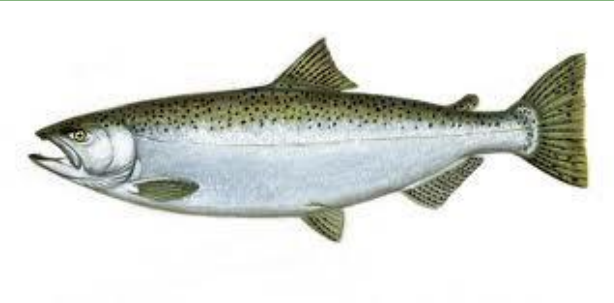
Endangered Species Act

- 1991, The Snake River sockeye is the first salmon in the Pacific Northwest to be listed as endangered.
- By 1999, wild salmon had disappeared from about 40 percent of their historic breeding ranges in Oregon, Washington, Idaho, and California.
- In Washington, the numbers have dwindled so much that salmon and bull trout were listed as threatened or endangered in nearly three-fourths of the state.

Endangered Species Act

- Upper Columbia Chinook (Spring Run)

ENDANGERED



- Upper Columbia Steelhead

THREATENED



- Upper Columbia Bull Trout

THREATENED

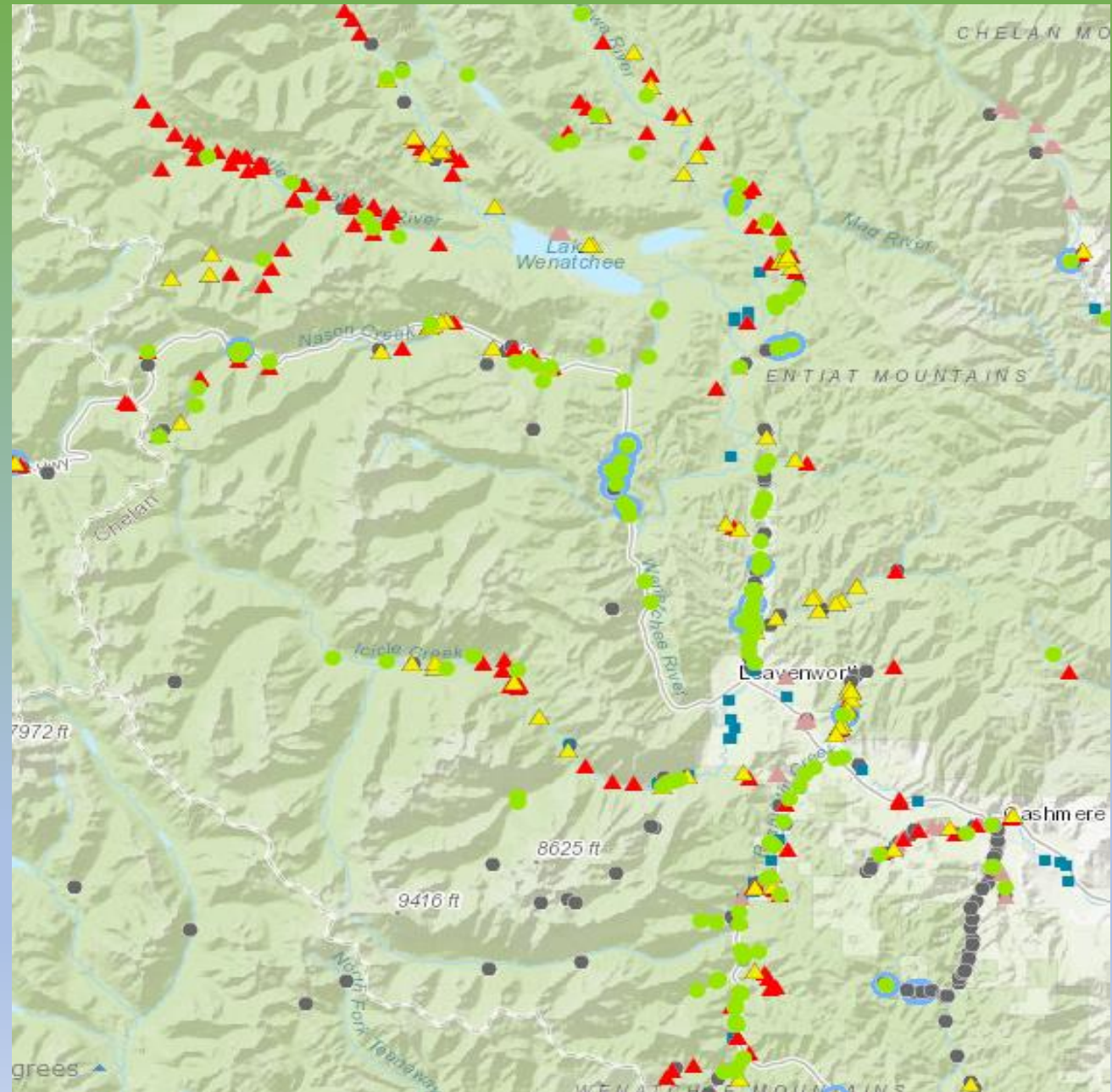


2016-2017 Data Collection Summary

605 Sites Surveyed:

- 423 Culverts
- 132 Non-Culvert Crossings
- 53 Dams
- 63 Diversions

~90% of culverts are some level of Barrier

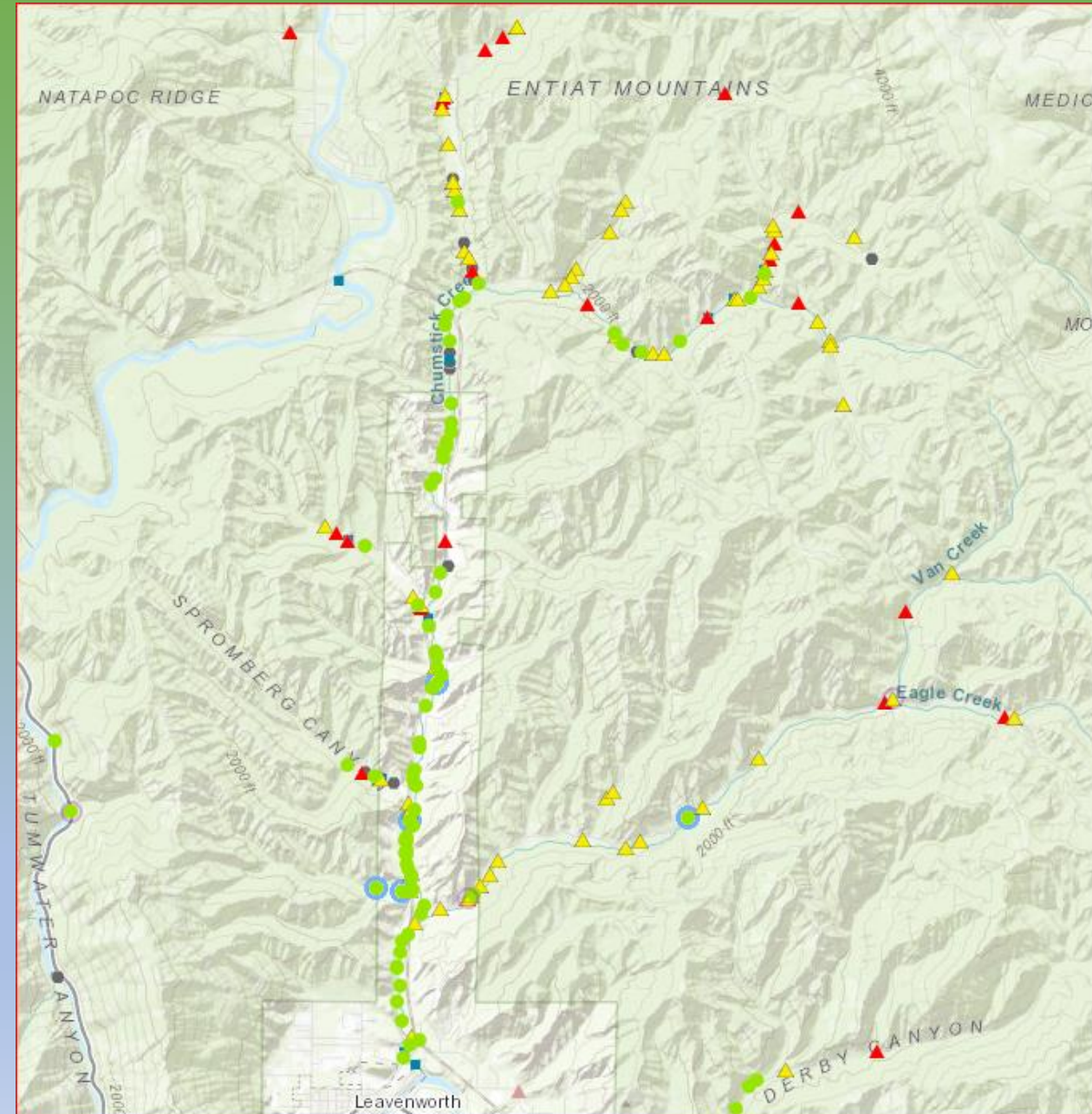


Chumstick Fish Passage Results

107 sites were identified

- 15 - complete barriers,
- 41 - partial barriers,
- 43 - 100% passable
- 8 - unknown barrier status.

apps.wdfw.wa.gov/fishpassage/











Completed Culvert Replacements and Monitoring Results



Chumstick Fish Passage Barrier Removals completed to date

Legend

33 Barriers Removed to Date include:

Purple dots = 2001 partial barriers

Red squares = 2009 partial barriers

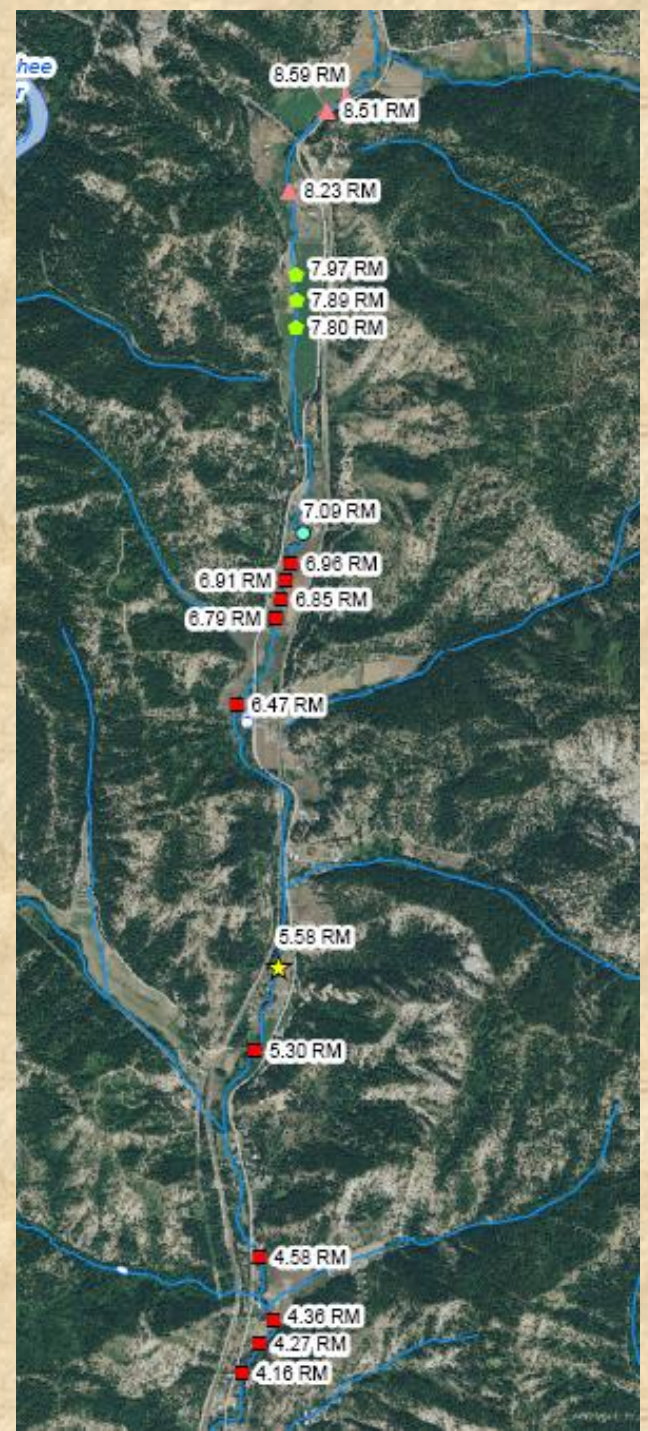
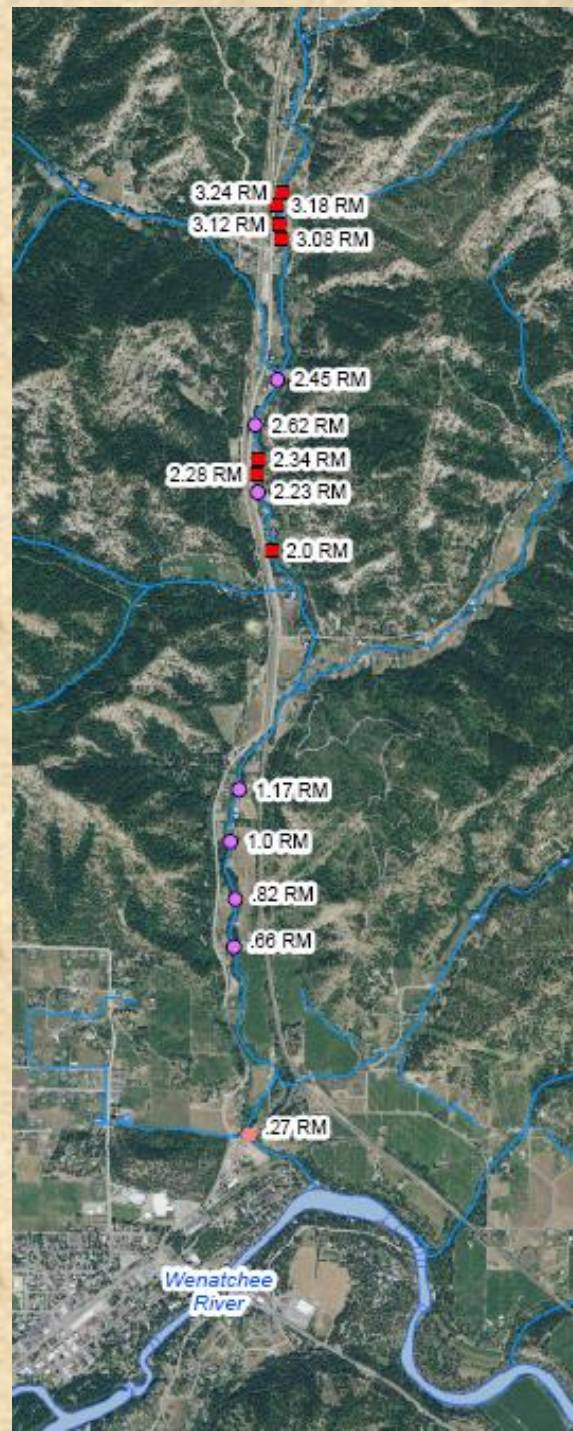
Pink dots = 2009 complete barriers

Star = 2010 complete barrier

Green dots = 2011 diversion barriers

Pink triangles = 2012 partial barriers

Blue circles = 2013 partial barriers

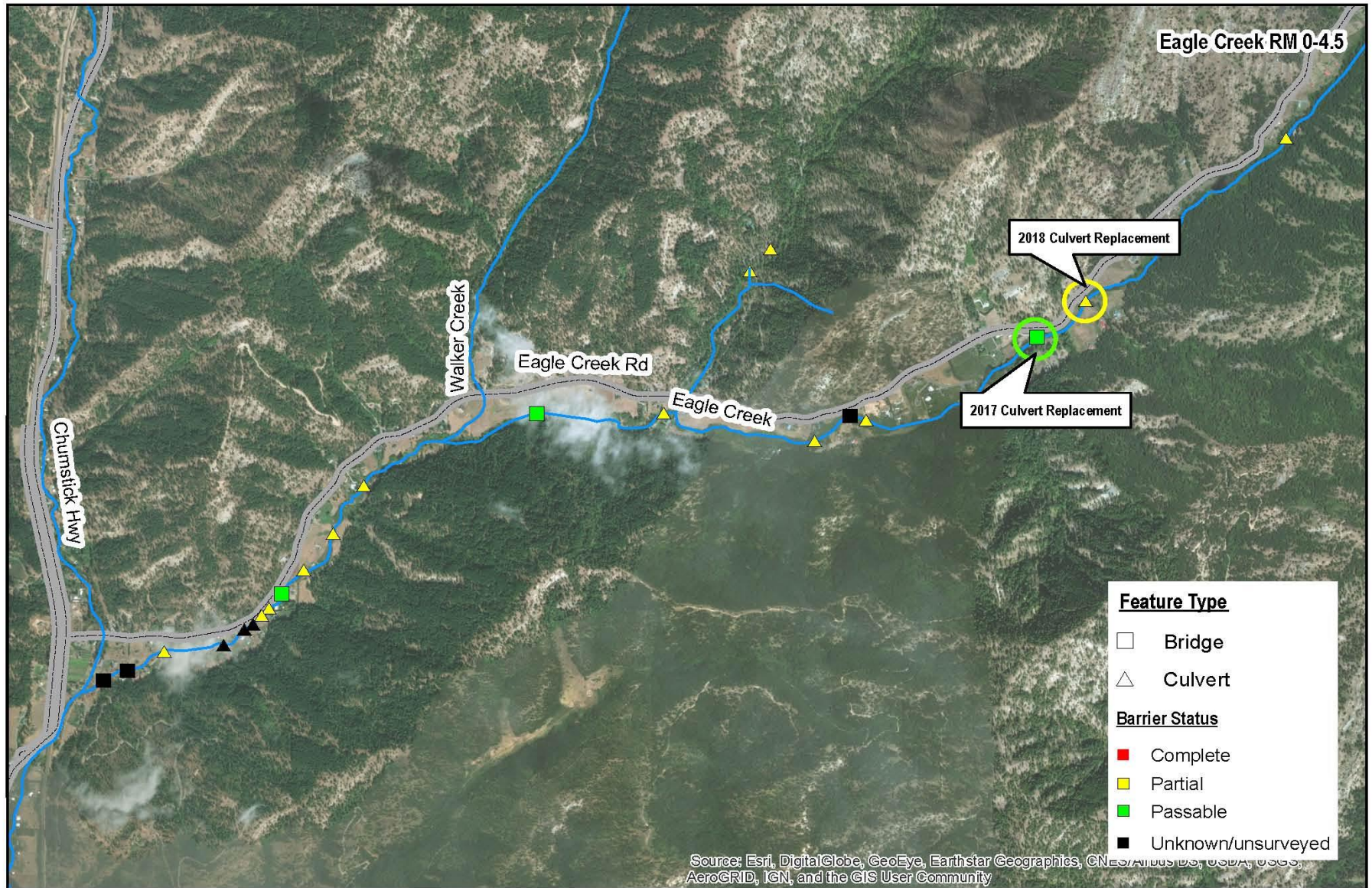


Year	Species	North Rd (RM 0.28)	Sunitch (RM 5.3)	Merry (RM 8.8)	Eagle Creek
2013	Steelhead	31	2	1	
	Coho	4			
	spring Chinook	6			
	Total	41	2	1	
2014	Steelhead	40			
	Coho	14			
	spring Chinook	2			
	Total	56	0	0	
2015	Steelhead	31			
	Coho	9			
	spring Chinook	4			
	Total	44	0	0	
2016	Steelhead	56	10	5	
	Coho	6			
	spring Chinook	4	1		
	Total	66	11	5	
2017	Steelhead	24			
	Coho	7			
	spring Chinook	4			
	Total	35	0	0	
Jan-May 2018	Steelhead	10			1
	Coho	1			3
	spring Chinook	1			
	Total	12	0	0	4

Eagle Creek fish barrier assessment



Eagle Creek Barrier Surveys

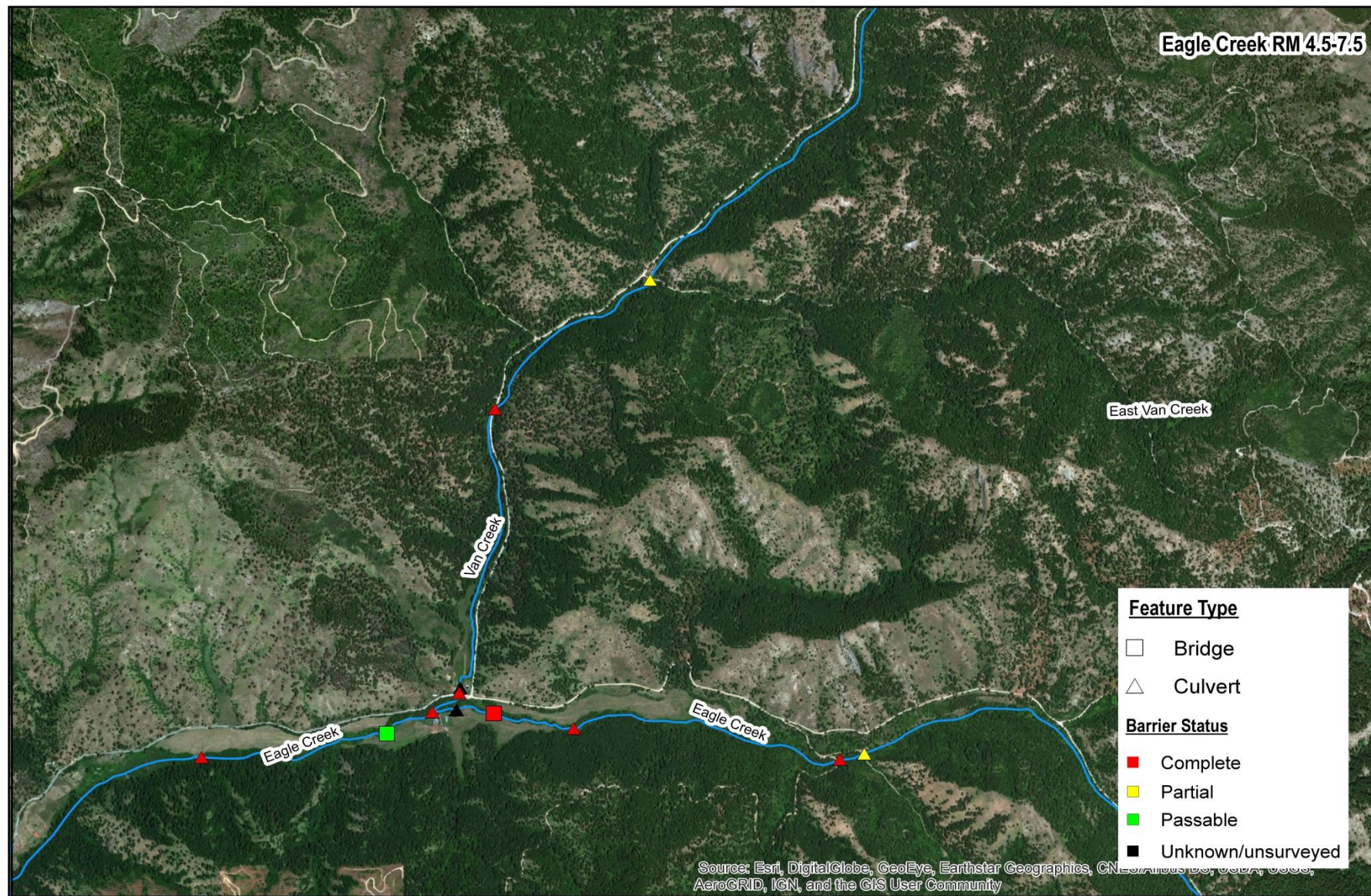


0 0.25 0.5 1 Miles

This map was created by the Chelan County Natural Resources Department on May 22nd, 2018. The County makes no warranty, expressed or implied, concerning the data's content, accuracy, currency or completeness, or concerning the results to be obtained from queries or use of the data. ALL DATA IS EXPRESSLY PROVIDED "AS IS" AND "WITH ALL FAULTS".



Eagle Creek Barrier Surveys



0 0.25 0.5 1 Miles

This map was created by the Chelan County Natural Resources Department on May 22nd, 2018. The County makes no warranty, expressed or implied, concerning the data's content, accuracy, currency or completeness, or concerning the results to be obtained from queries or use of the data. ALL DATA IS EXPRESSLY PROVIDED "AS IS" AND "WITH ALL FAULTS".



2017 Eagle Creek Barrier Replacement



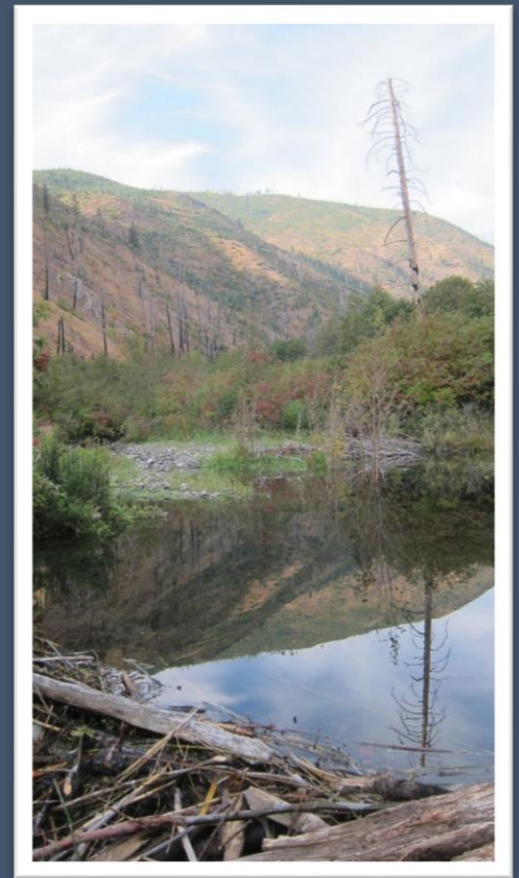
2017 Eagle Creek Barrier Replacement



Wenatchee Beaver Project

Goal: Re-establish beavers in Wenatchee Basin tributaries for habitat enhancement, flow augmentation and storage, and amelioration of climate-related impacts

- Loss of beaver among most profound causes of habitat alteration in headwater systems
- Beavers - Create complex stream habitat, recruit wood mitigate floods, reduce incision and promote floodplain interaction & enhance biodiversity
- Project will relocate 'nuisance' beavers through public and private land partnership for 10-15 pairs or family groups & conduct monitoring
- Assist landowners with management techniques for human-beaver compatibility.





Chumstick Wildfire Stewardship Coalition

Collaborative established in 2008

--implement Community Wildfire Protection Plan

--support hazardous fuel reduction in a 50,000-acre watershed located on Okanogan-Wenatchee National Forest

Scope expanded to fuel reduction across boundaries- focus on private lands and adjoining public lands

Firewise education – community oriented

Throughout time, members of the CWSC have carried a vision of creating a “new natural”—a culture that coexists with wildfire and accepts fire as a natural process in our landscape - healthy forests and a community that is ready for and adapted to wildfire.

Why this work?

Mission: To build a community, culture and landscape adapted to fire.

Change your environment...

Change your landscape...

Change your neighborhood...

Change your community...

Change your life...

**Protecting communities by working
across boundaries**





Chumstick Wildfire Stewardship Coalition & Chelan County Fire District 3 Chipper Program

- Trade your hours of work for free chipping!
- Chipping begins late July
- Please visit Chumstickcoalition.org for more information & to sign up
- *Chips will not be removed from property



Cascadia Conservation District

www.cascadiacd.org/ Look under programs for information on landowner assistance and wildfire preparedness.

Firewise Communities: www.firewise.org

Chumstick Wildfire Stewardship Coalition

www.chumstickcoalition.org/



Cascadia Conservation District

The Cascadia Conservation District is a non-regulatory, grant-funded organization dedicated to encouraging the wise stewardship and conservation of all natural resources in Chelan County.

Our board and staff members work cooperatively with local landowners and communities to provide technical and financial assistance for soil, water, forest, fish, and wildlife conservation efforts. We currently serve all of Chelan County.

Learn more at www.cascadiacd.org or by calling (509) 436-1601.

Cascadia in the Chumstick

- Stream restoration plantings on Chumstick Creek, Little Chumstick, and Eagle Creek.
- Volunteer Planting Projects
- Volunteer Tire-Clean Up- over 200 tires removed from Little Chumstick by ~20 neighbors and volunteers.



After



During



After



- ~80 ac of Fuels Reduction Treatment with private landowners
- Spring and Fall "Free Roving Chipper" Program
- Working on forest restoration projects that span private and public land by connecting landowners, Firewise Communities, and Forest Health Collaboratives (CWSC, NCWFHC)
- New Firewise Community (Ski Hill) and several working towards recognition
- New Grant opportunity for forestry work in Camp 12 Rd area on private and public land



Before

After