

WENATCHEE WATERSHED COMMUNITY MEETINGS

Learn about upcoming stream and forest restoration projects and water resource management in your area.



NEED MORE INFORMATION?

Please contact:

Mary Jo Sanborn

Chelan County Natural Resource Dept.

411 Washington Street, Suite 201

Wenatchee, WA 98801

509.667.6532

maryjo.sanborn@co.chelan.wa.us

Visit our website for meeting
information

www.co.chelan.wa.us/natural-resources



Community Meeting Schedule

Chumstick Creek

Wednesday, May 23rd, 6:30 pm to 8:30 pm
Leavenworth Fire Hall (FD #6)

Mission Creek

Wednesday, May 30th, 6:30 pm to 8:30 pm
Cashmere Riverside Center

Upper Wenatchee River (including Lake Wenatchee, Little Wenatchee River, White River and Chiwawa River)

Saturday, June 2nd, 10:00 am to noon
Lake Wenatchee Recreation Club

Lower Wenatchee River (Leavenworth to Columbia River)

Tuesday, June 12th, 6:30 pm to 8:30 pm
Cashmere Riverside Center

Peshastin Creek

Wednesday, June 13th, 6:30 pm to 8:30 pm
Dryden Fire Station (FD #6)

Nason Creek

Saturday, June 16th, 10:00 am to noon
Lake Wenatchee Fire Hall (FD #9)

Topics discussed at Watershed Community

Meetings will include:

- Updates on completed and proposed stream restoration projects
- Updates on water resources and forest management projects

NASON CREEK COMMUNITY MEETING

- WELCOME AND INTRODUCTIONS
- BACKGROUND ON WATERSHED PLANNING AND SALMON RECOVERY PLANNING
- IMPLEMENTATION PRIORITIES
- COMPLETED AND ONGOING PROJECTS
- FUTURE EFFORTS AND OPPORTUNITIES

WATERSHED PLANNING WENATCHEE RIVER WATERSHED

- PLANNING PROCESS BEGAN IN 1999 UNDER RCW 90.82
- PLAN APPROVED IN 2006 BY LOCAL STAKEHOLDER GROUP
- ALL 4 ELEMENTS INCLUDED: WATER QUANTITY, INSTREAM FLOWS, WATER QUALITY AND HABITAT

ENDANGERED SPECIES ACT (ESA)

- UPPER COLUMBIA SPRING CHINOOK – 1999 ENDANGERED
- UPPER COLUMBIA STEELHEAD – 1997 ENDANGERED, RE-CLASSIFIED AS THREATENED
- BULL TROUT - THREATENED

RESTORATION STRATEGY - REGIONAL TECHNICAL TEAM -

NASON CREEK (PRIORITY 1):

1. PERIPHERAL AND TRANSITIONAL HABITAT (SIDE CHANNEL AND WETLAND)
2. CHANNEL STRUCTURE AND FORM (INSTREAM COMPLEXITY)
3. RIPARIAN CONDITION
4. *SEDIMENT REDUCTION*

Wenatchee River Basin **Restoration** Priorities

Assessment Unit	Priority
Nason Creek	1
Upper Wenatchee River	2
Icicle Creek	3
Peshastin Creek	4
Lower Wenatchee River	5
Mission Creek	6
Little Wenatchee River	Not a priority at this time
White River	Not a priority at this time
Middle Wenatchee River	Not a priority at this time
Chumstick Creek	Not a priority at this time
Chiwawa River	Not a priority at this time

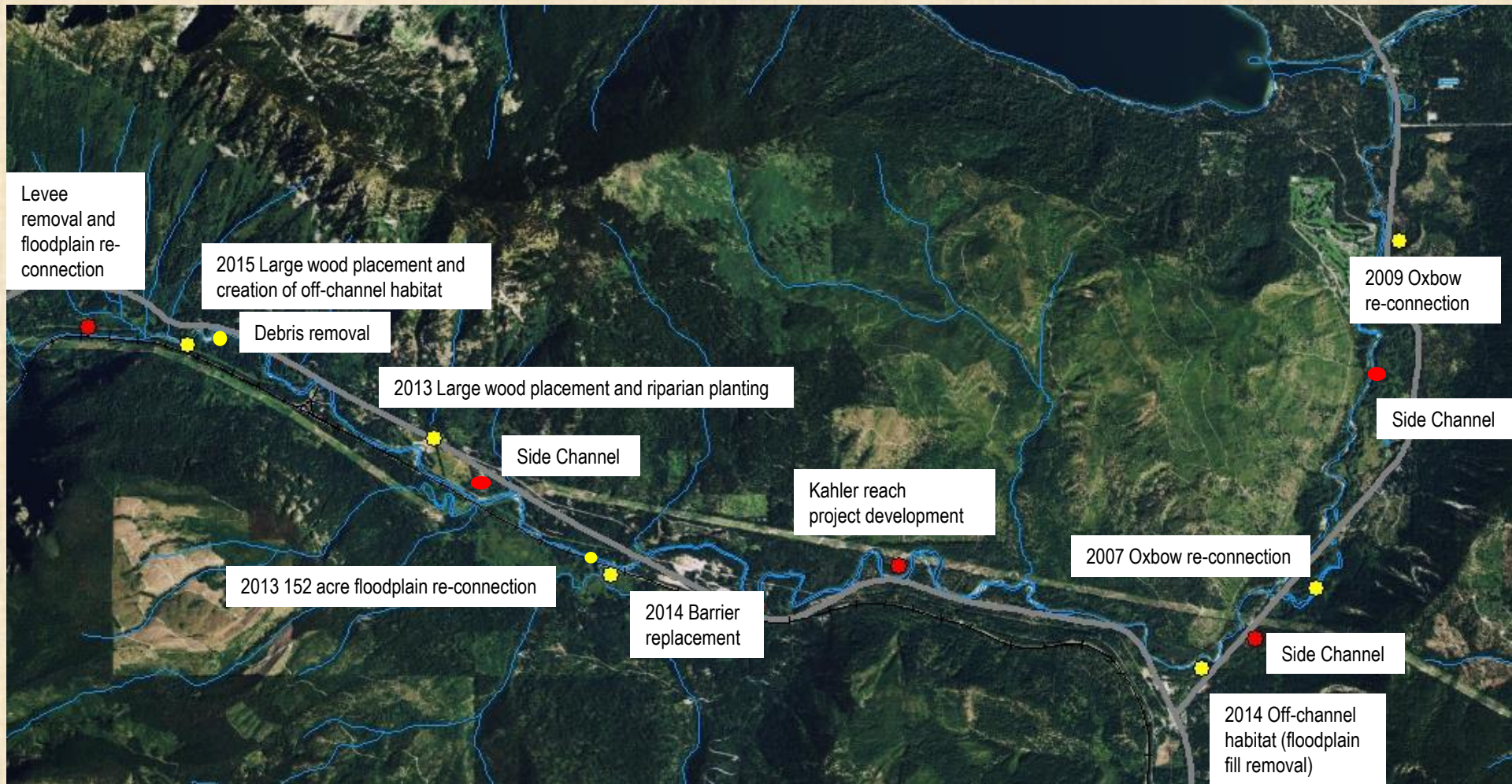
Wenatchee River Basin **Protection** Priorities

Assessment Unit	Priority
Nason Creek	1
White River	1
Upper Wenatchee River	1
Chiwawa River	1
Little Wenatchee River	2
Middle Wenatchee River	2
Icicle Creek	3
Lower Wenatchee River	3
Peshastin Creek	4
Mission Creek	4
Chumstick Creek	4

NEW WATER POLICIES

- WA SUPREME COURT CASES
- *SWINOMISH, FOSTER, HIRST*
- LIMITS TO ECOLOGY'S "TOOLBOX"
- MORE LOCAL GOVERNMENT RESPONSIBILITY

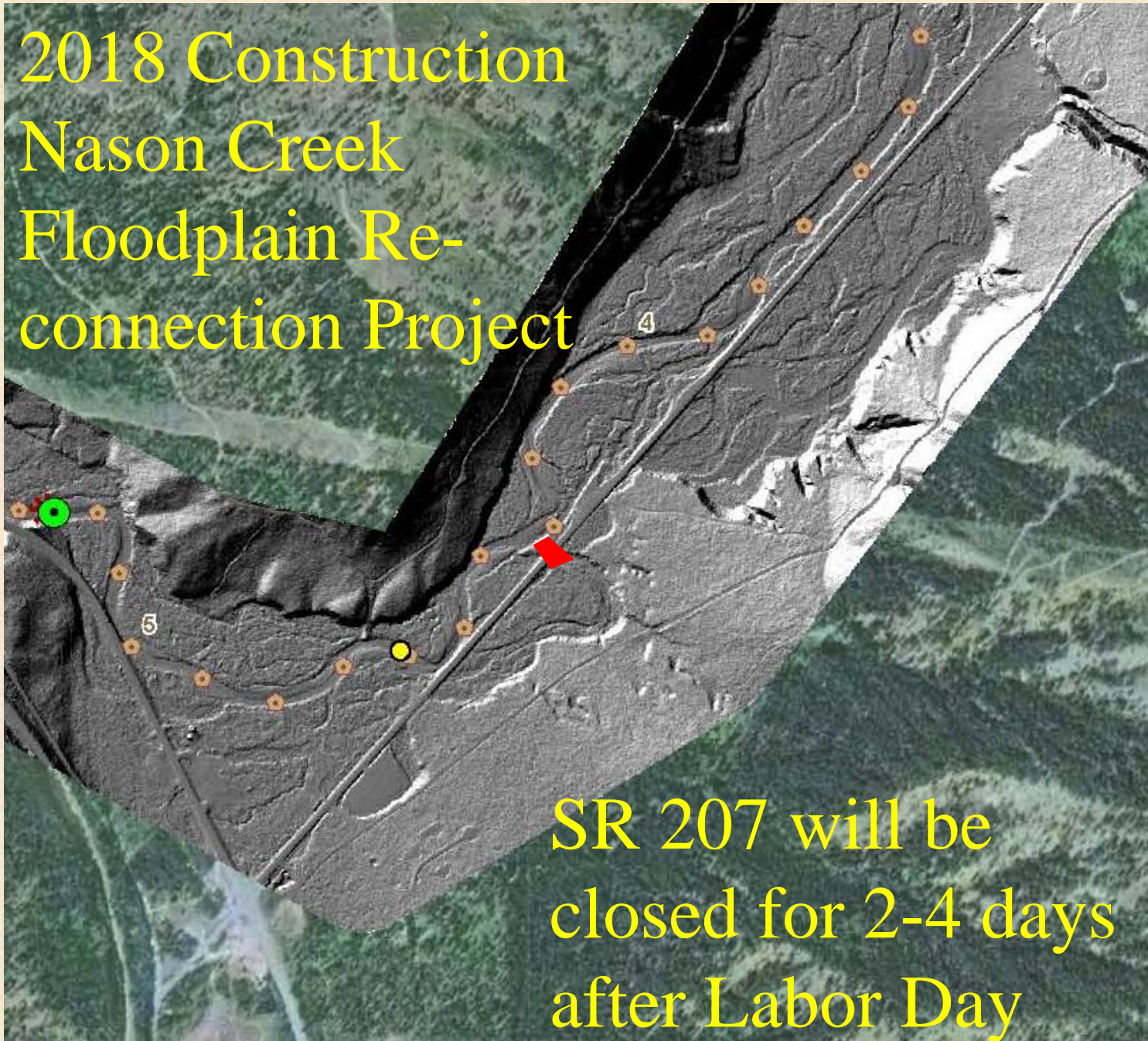
PROJECTS OVERVIEW



Legend:

- Proposed projects (in progress)
- Completed projects

2018 Construction Nason Creek Floodplain Re- connection Project



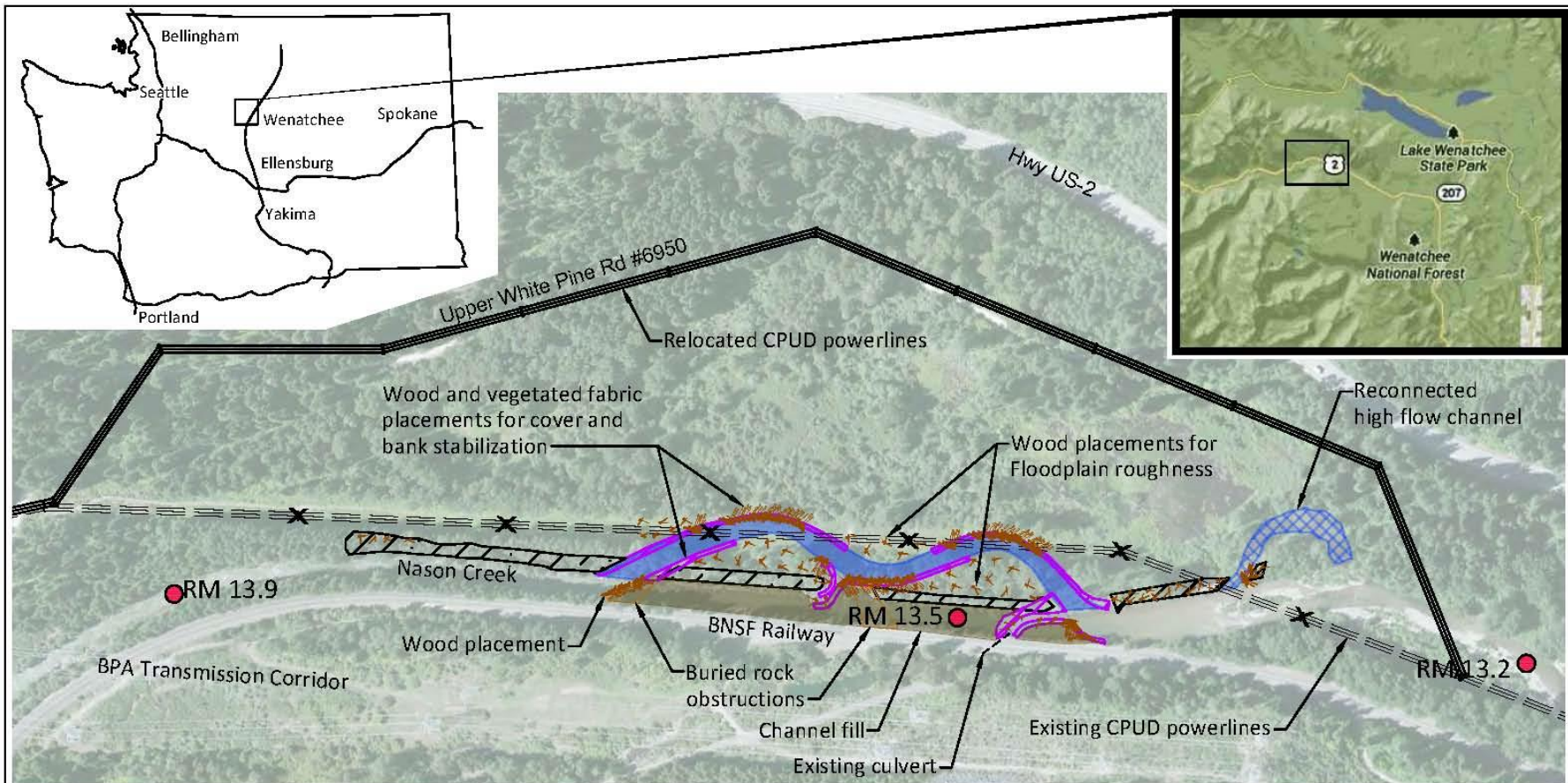
SR 207 will be
closed for 2-4 days
after Labor Day









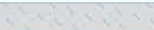


KAHLER REACH STREAM HABITAT ENHANCEMENT DESIGN



Upper White Pine Floodplain Reconnection Project





- | | | | | |
|---|---------|---------------------------------------|---|--|
|  | RM 13.4 | River Mile (Existing Channel) |  | Existing Levee to be Removed |
|  | | Proposed Main Channel Location |  | Vegetated Fabric Bank Stabilization |
|  | | Buried Obstruction in Old Channel |  | Existing High-Flow Channel to be Reconnected |
|  | | Constructed Floodplain in Old Channel |  | CPUD Powerlines - Existing Location |
|  | | New Backwater Alcove |  | CPUD Powerpole Structures - To be Removed |
| | | |  | CPUD Powerlines - Proposed Relocation |

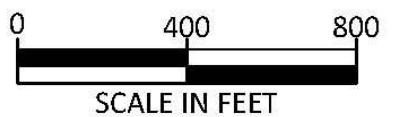


Figure 1 Nason Upper White Pine Proposed Action

PROJECT TIMELINE AND CONTACTS

- 2016 TREE CLEARING ADJACENT TO WHITE PINE ROAD
- 2017 POWERLINE RE-LOCATION TO WHITE PINE ROAD
- 2017 NEW CHANNEL CONSTRUCTION
- 2018 LEVEE REMOVAL, INTRODUCE FLOWS TO NEW CHANNEL AND EXISTING CHANNEL BACKFILL, PLANTINGS TO RESTORE WORK AREAS

FUNDERS: US BUREAU OF RECLAMATION, WA STATE RECREATION AND CONSERVATION OFFICE, TRIBUTARY COMMITTEE, DEPARTMENT OF ECOLOGY

QUESTIONS? CONTACT JENNIFER HADERSBERGER (509) 860-1022

NASON CREEK RM 2.3 OXBOW RE-CONNECTION PROJECT



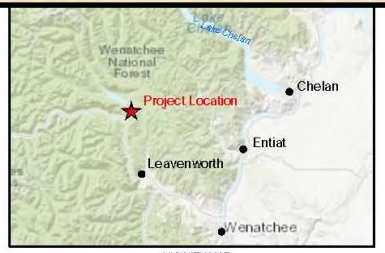
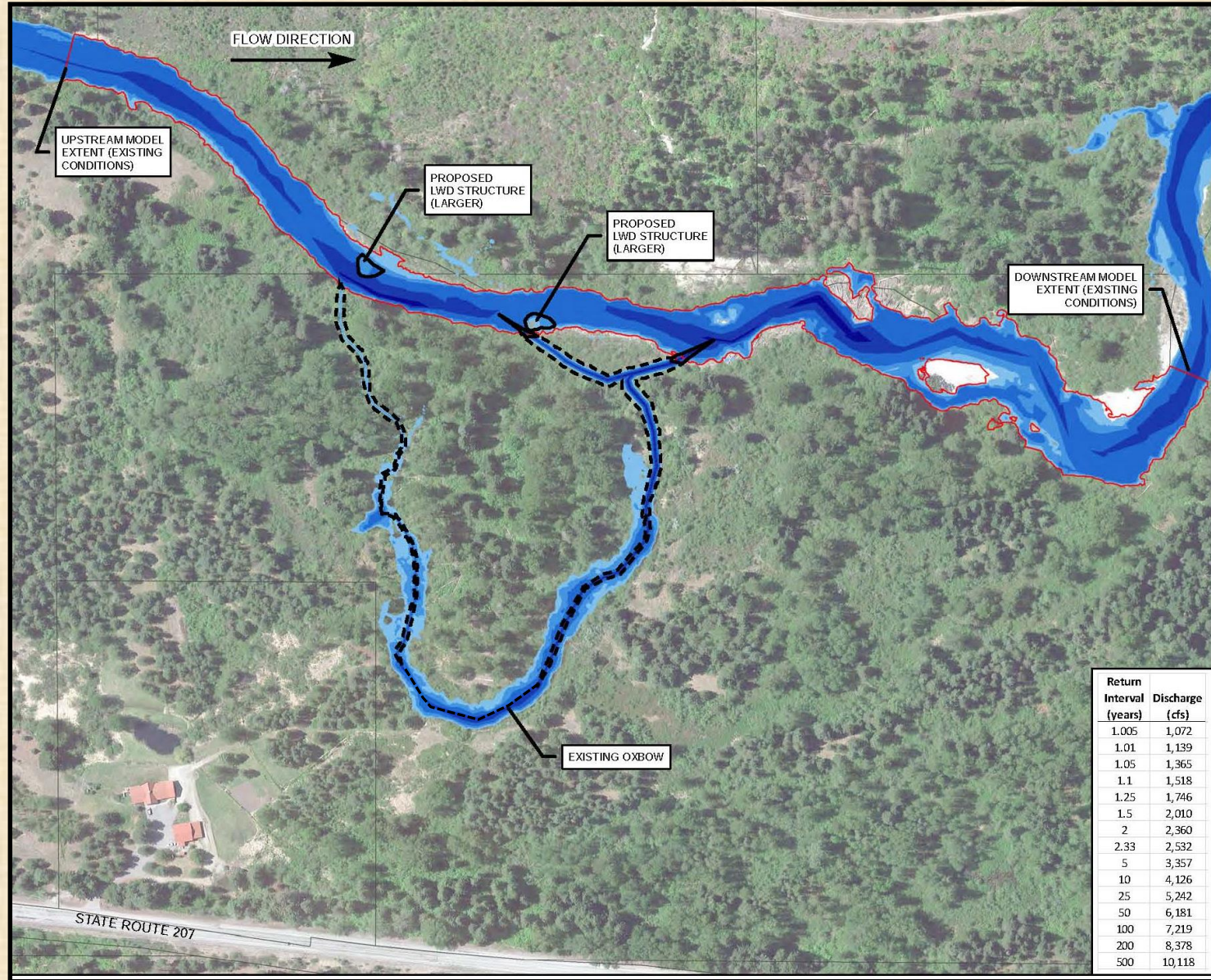
Historic mainstem remains as oxbow and upstream and downstream ends will be re-connected to the mainstem

© 2016 Google

Google earth

1998

Imagery Date: 5/7/2015 47°47'00.31" N 120°42'48.27" W elev 1899 ft eye alt 2333 ft



LEGEND

- Depth (ft) at 1,220 cfs**
- No Data
 - Less than 1
 - 1 to 2
 - 2 to 4
 - 4 to 6
 - Greater than 6
 - Existing Conditions Inundation Extent
- Earthwork Limits**
- Waters
 - Wetland
 - Parcels (approximate)

Source: Aerial (Google Earth, accessed 2017), 2D Model Results; Earthwork Limits (Rio ASE, 2017).

Notes:
 1 - Two-dimensional (2D) model results are preliminary.
 2 - LiDAR surface used for topographic basis for hydraulic modeling includes surveyed and estimated bathymetric data; surface may contain inaccuracies.

Return Interval (years)	Discharge (cfs)
1.005	1,072
1.01	1,139
1.05	1,365
1.1	1,518
1.25	1,746
1.5	2,010
2	2,360
2.33	2,532
5	3,357
10	4,126
25	5,242
50	6,181
100	7,219
200	8,378
500	10,118

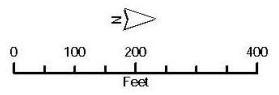
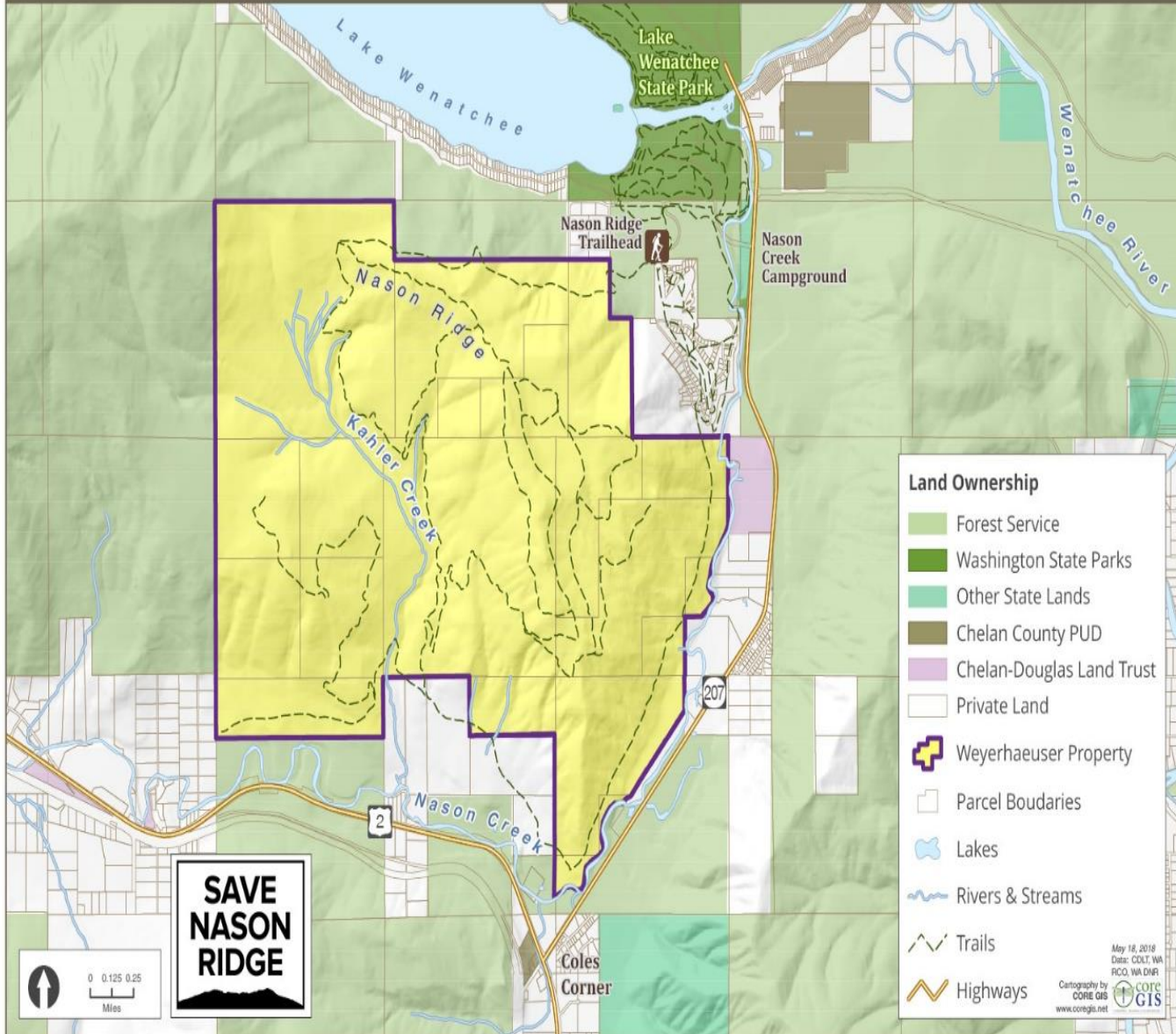


Figure 10
Nason Creek 2D Modeling Results
Proposed (Alt 3) Depth at 1,220 cfs (~1-Year Flood)
 Nason Creek RM 2.3 Side Channel Reconnection
 for Chelan County Natural Resources Department

Nason Ridge Purchase

SaveNasonRidge.org

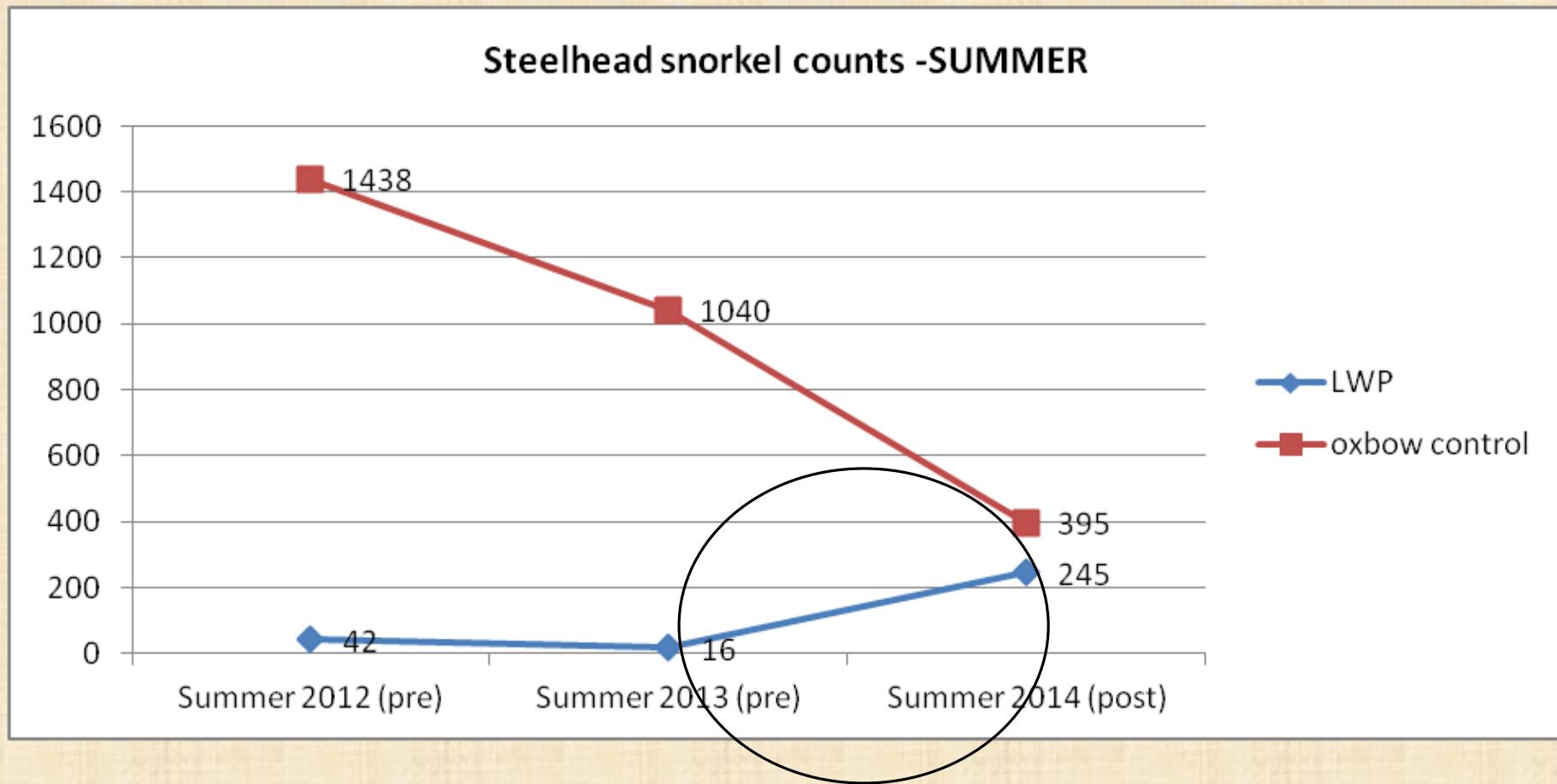


— A Chelan-Douglas Land Trust and Western Rivers Conservancy project —

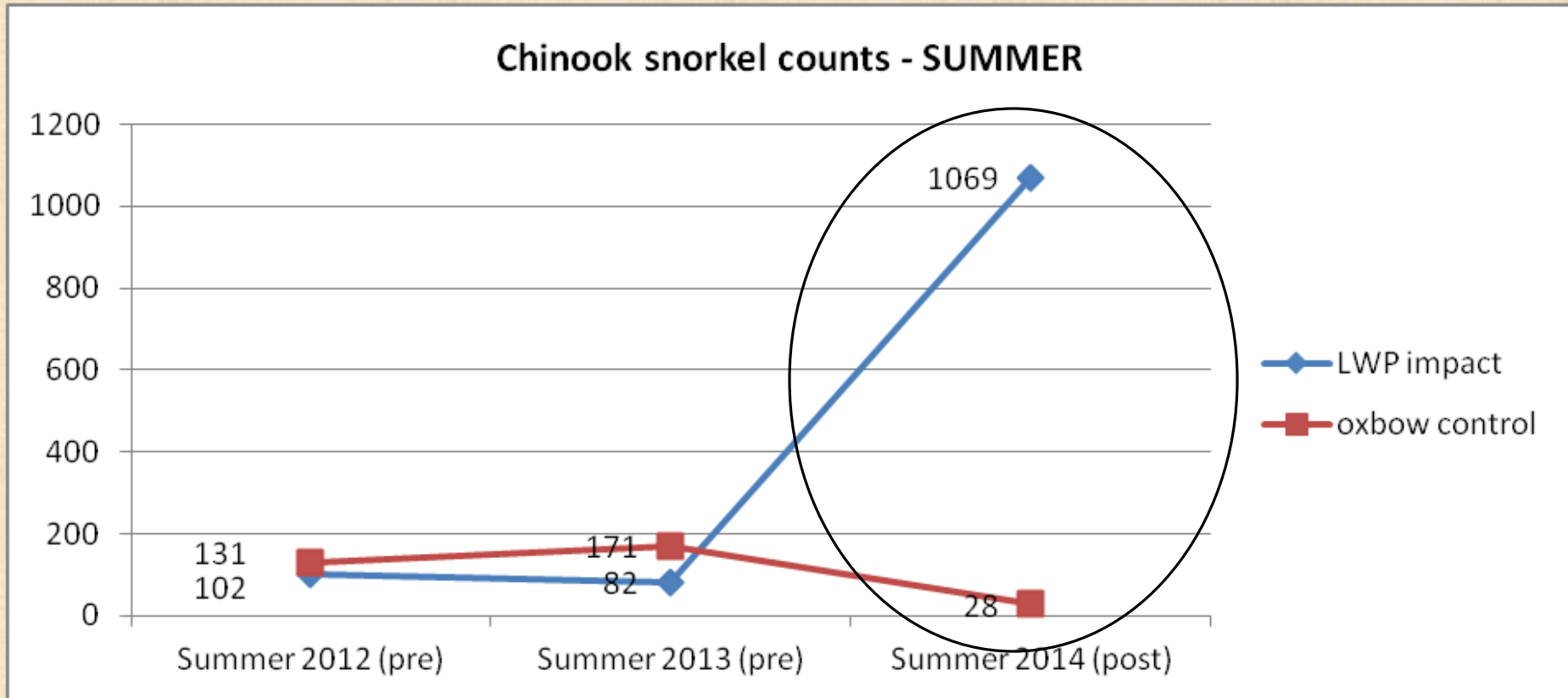
ARE FISH USING THE 2013 LOWER WHITE PINE BNSF RECONNECTION?



Lower White Pine, >200 more steelhead post construction



Lower White Pine Increased spring Chinook pre → post construction



ARE FISH USING THE 2007 OXBOW RECONNECTION?



2007 OXBOW

2007-2010 FISH USE DATA



Species	2007 (pre-project)	2008	2010
Steelhead	16	193	2698
Chinook	20	314	1275

COMPLETED PROJECTS

FLOODPLAIN DEBRIS REMOVAL AND RIVER CLEAN-UP

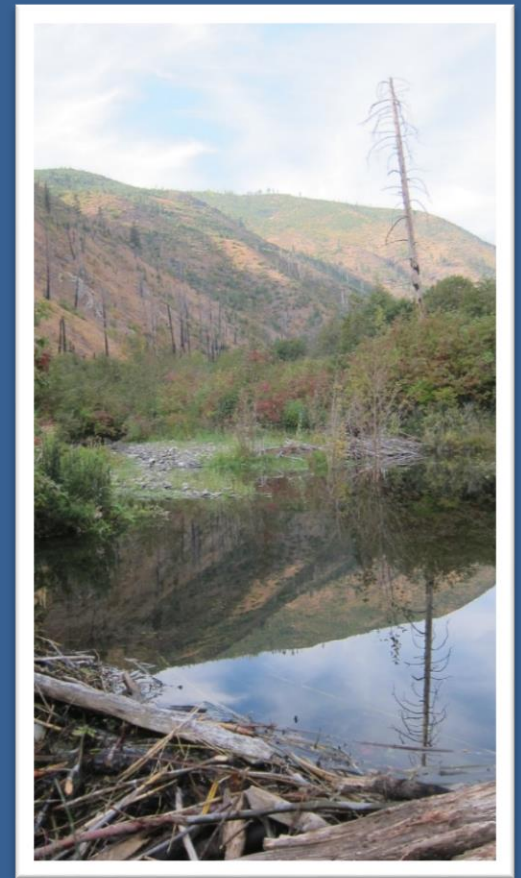
- REMOVING 13+ VEHICLES
- REMOVED 10 CABINS
- REMOVED 300 CU/YDS OF DEBRIS



Wenatchee Beaver Project

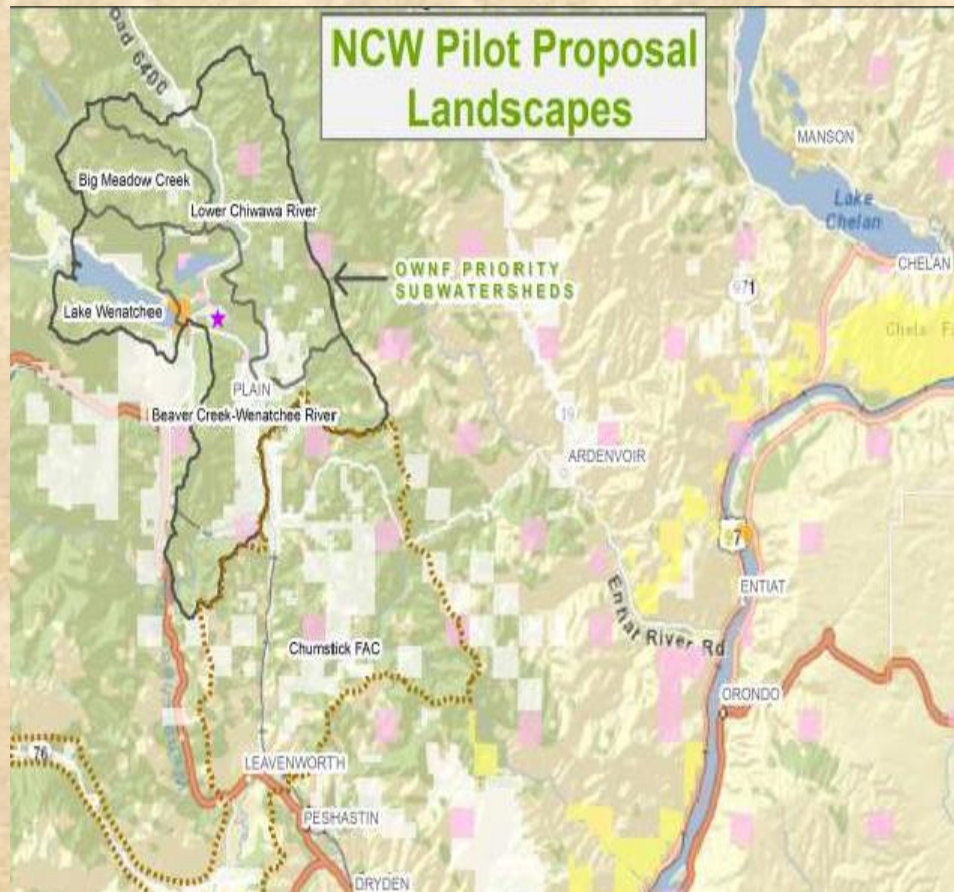
Goal: Re-establish beavers in Wenatchee Basin tributaries for habitat enhancement, flow augmentation and storage, and amelioration of climate-related impacts

- Loss of beaver among most profound causes of habitat alteration in headwater systems
- Beavers - Create complex stream habitat, recruit wood mitigate floods, reduce incision and promote floodplain interaction & enhance biodiversity
- Project will relocate 'nuisance' beavers through public and private land partnership for 10-15 pairs or family groups & conduct monitoring
- Assist landowners with management techniques for human-beaver compatibility.

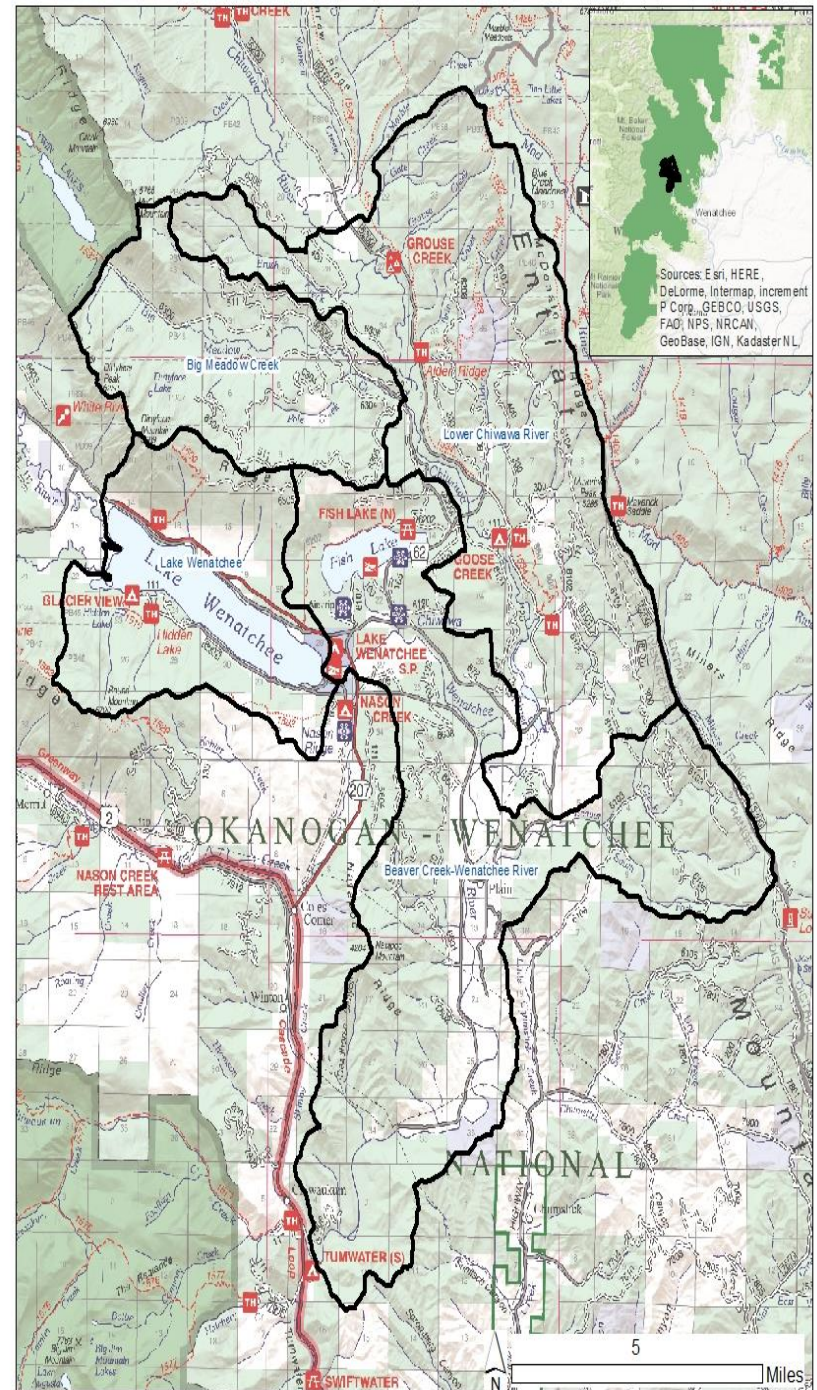


Chelan Pilot Project

Big Meadow Creek; Lower Chiwawa River; Lake Wenatchee; Beaver Creek/Wenatchee River



Project Area



Through scientifically-sound restoration treatments, the Upper Wenatchee Pilot Project will:

Goal 1: Create a more resilient terrestrial and aquatic landscape in the Lower Chiwawa, Big Meadow, Lake Wenatchee, and Beaver Creek-Wenatchee River sub-watersheds to,

- Address conditions that have departed from the historic range of variability to reduce the risk of uncharacteristic wildfire and other disturbances to protect lives, communities, and ecological values
- Promote better outcomes for a broad spectrum of ecological, social, and community resources and values in a manner that recognizes and responds to the important role of natural fire and helps mitigate risk in the wildland urban interface while providing for sustainable user access
- Protect and restore watershed conditions that maintain uplands, late-successional habitat and large old trees, riparian and instream habitat, and water quality and quantity for the benefit of communities and native fish and wildlife
- Design and implement treatments to support the recovery of threatened, endangered, and sensitive species

Goal 2: Develop an effective model for collaboration among the USFS, other federal, state, and local agencies, local Tribes, the North Central Washington Forest Health Collaborative and member organizations, as well as a wide range of local landowners, community partners and stakeholders. This collaborative planning effort will increase the shared leadership of the forest and watershed restoration vision and will result in greater support for all management tools needed to implement terrestrial and aquatic treatment actions on this landscape.

Goal 3: Optimize the production of ecosystem services and forest products to fulfill the stewardship mandate of the U.S. Forest Service in a manner that reflects a broad spectrum of ecological, cultural, and socio-economic values.

Key project information:

- The primary focus of the project is to restore forest health, reduce wildfire risk, improve wildlife habitat, and improve watershed function on a landscape scale.
- Restoration may include both terrestrial and aquatic work such as prescribed fire, thinning, stream improvements, road system work and more.
- This restoration project will take a holistic look at the current condition of the forest assessing social, terrestrial, aquatic, access, and other important values.

Key Project Contacts:

Jeff Rivera, Wenatchee River District Ranger, (509) 548-2550

Paul Kelley, Environmental Coordinator, Wenatchee Ranger District, (509) 548-2583

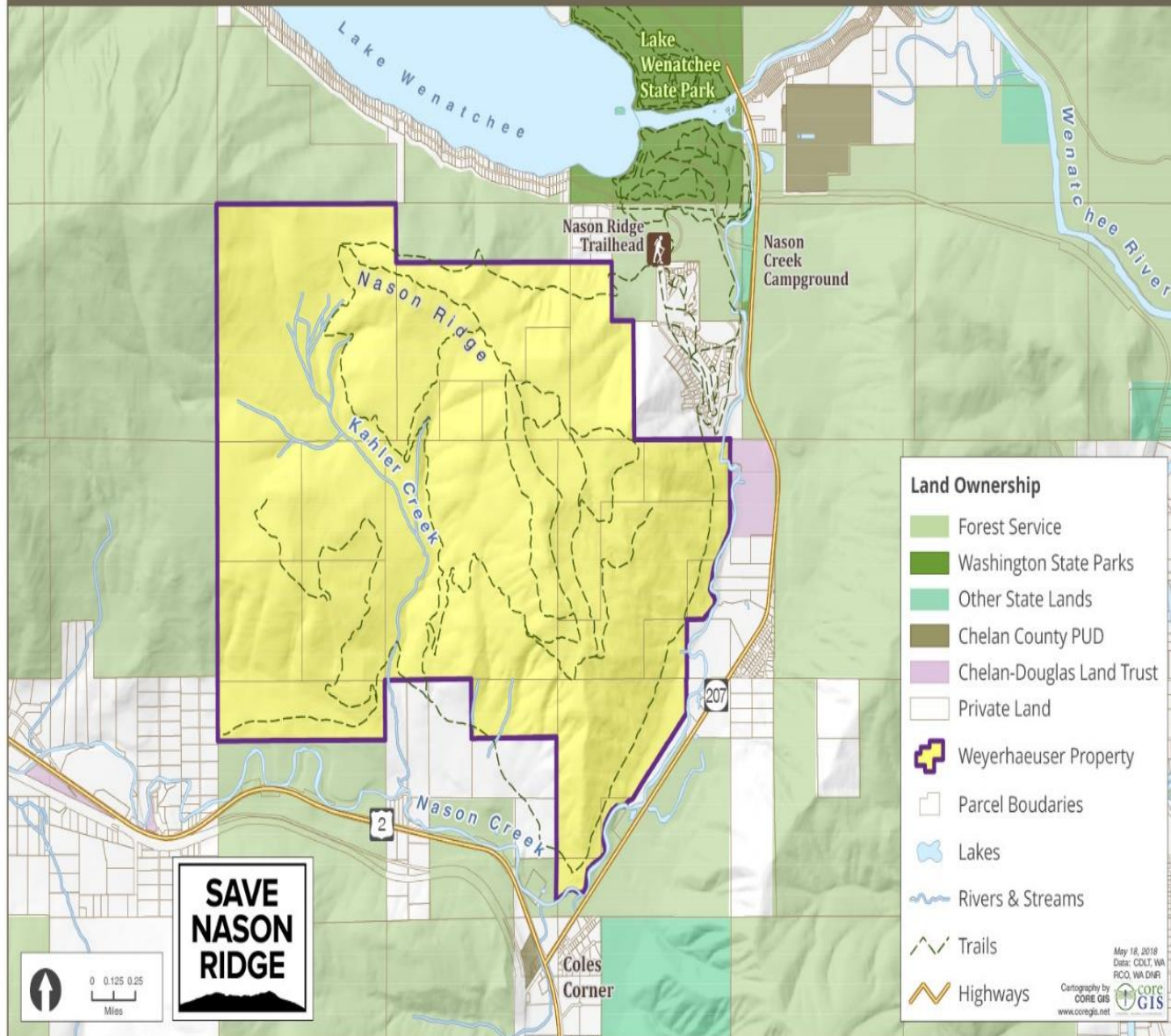
Deborah Kelly, Acting Public Affairs Officer, Okanogan-Wenatchee NF, (509) 664-9200

Partners: Include the North Central Washington Forest Health Collaborative, Chelan County, Lake Wenatchee Fire and Rescue, Yakama Nation, Washington DNR, Cascadia Conservation District, Vaagen Brothers Lumber, Conservation Northwest, Upper Columbia Salmon Recovery Board, American Forest Resource Council, The Nature Conservancy and many more.

Timeline: We anticipate initiating scoping for the NEPA process to begin later this summer, with the draft EA available for review next summer.

Nason Ridge Purchase

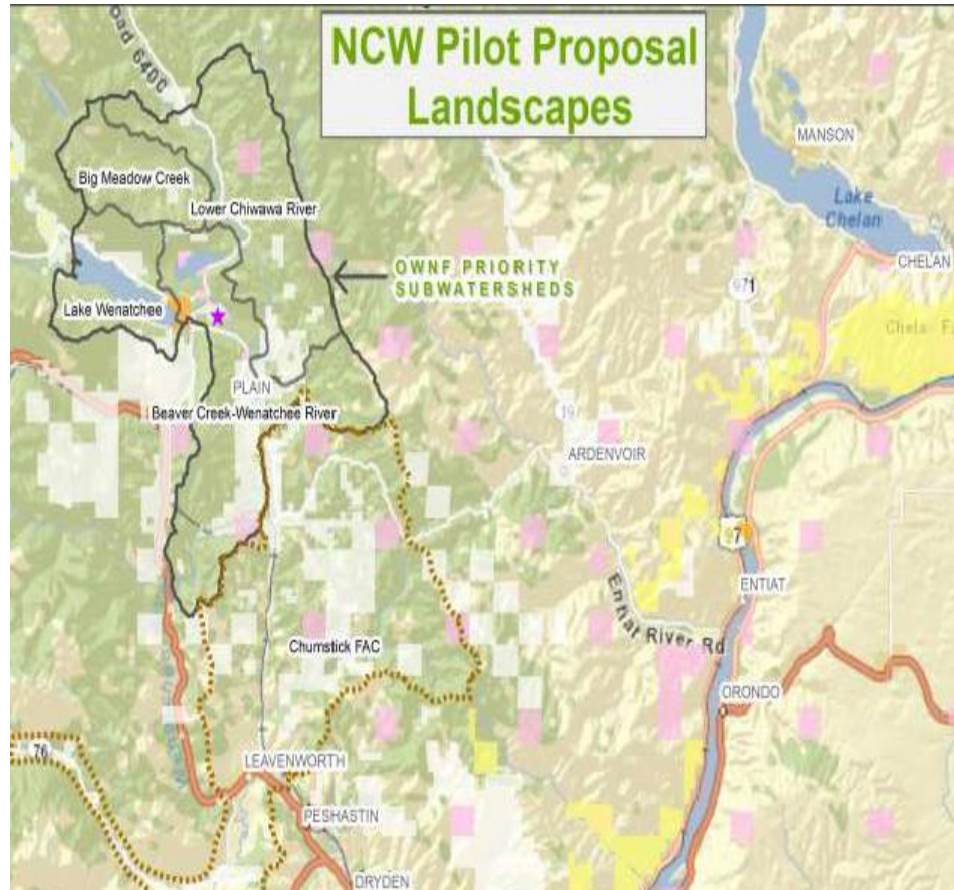
SaveNasonRidge.org



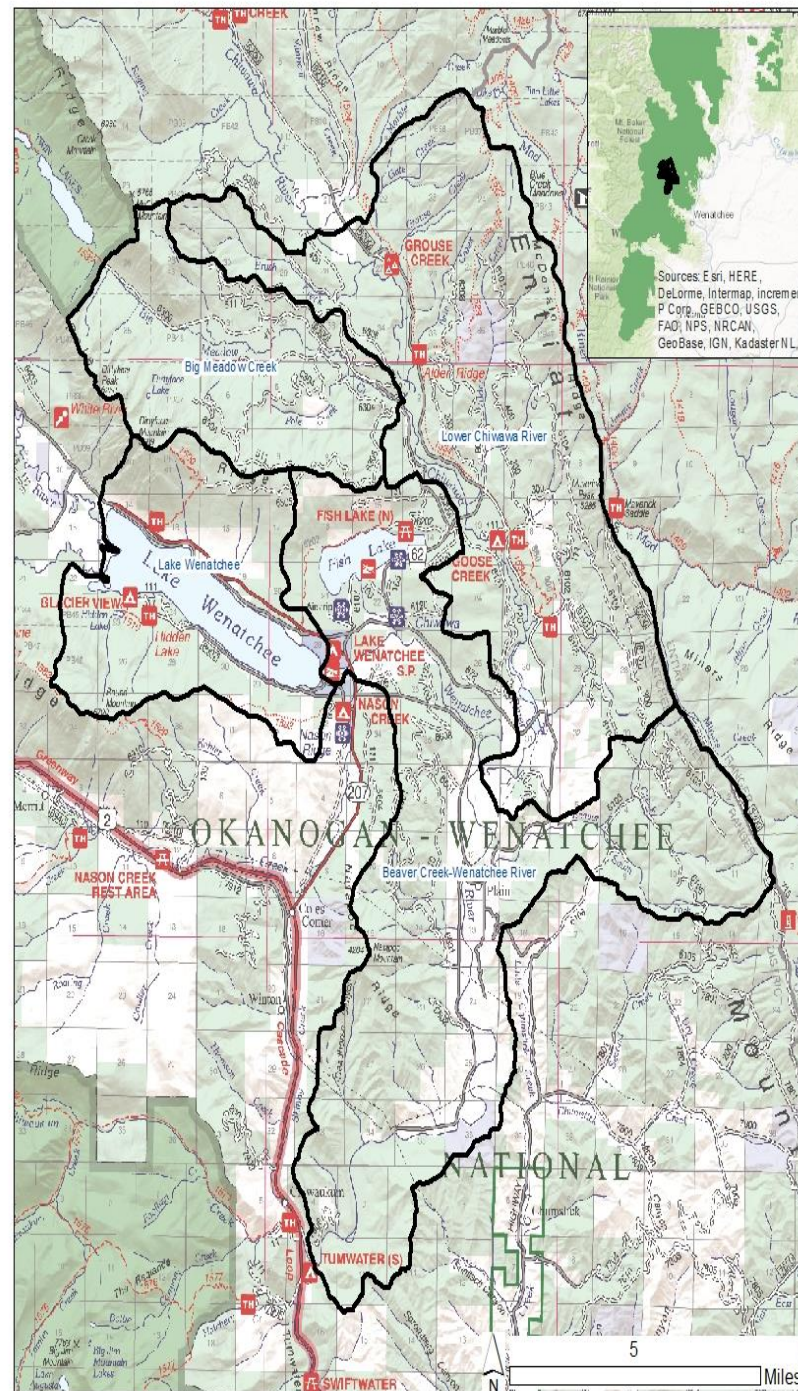
— A Chelan-Douglas Land Trust and Western Rivers Conservancy project —

Upper Wenatchee Pilot Project

Big Meadow Creek; Lower Chiwawa River; Lake Wenatchee; Beaver Creek/Wenatchee River



The Upper Wenatchee Pilot Project area covers 75,000 acres near Lake Wenatchee, WA



Collaboration

- In 2017, the Okanogan-Wenatchee National Forest received funding for collaborative restoration and hazardous fuels reduction work in response to call for greater investments in high wildfire risk communities



Members of the NCWFH Collaborative participated in field trip out to the project area as part of their 5th Anniversary Meeting and Field Trip on June 6 and 7, 2018.

One of these efforts is the Upper Wenatchee Pilot Project (UWPP).....which is a part of the Chelan Pilot

•**Partners:** North Central Washington Forest Health Collaborative, Chelan and Okanogan Counties, Lake Wenatchee Fire and Rescue, Yakama Nation, Washington DNR, Cascadia Conservation District, Vaagen Brothers Lumber, Conservation Northwest, Upper Columbia Salmon Recovery Board, American Forest Resource Council, The Nature Conservancy and many more.



The Forest plans to formally propose both aquatic and terrestrial restoration action through the UWPP in 2018.

- The primary focus of the project is to restore forest health, reduce wildfire risk, improve wildlife habitat, and improve watershed function on a landscape scale.
- Restoration may include both terrestrial and aquatic work such as prescribed fire, thinning, stream improvements, road system work and more.
- This restoration project will take a holistic look at the current condition of the forest assessing social, terrestrial, aquatic, access, and other important values.

- **Timeline:** We anticipate initiating scoping for the NEPA process to begin later this summer, with the draft EA available for review next summer.



Through scientifically-sound restoration treatments, the Upper Wenatchee Pilot Project will:

Goal 1: Create a more resilient terrestrial and aquatic landscape in the Lower Chiwawa, Big Meadow, Lake Wenatchee, and Beaver Creek-Wenatchee River sub-watersheds to,

- Address conditions that have departed from the historic range of variability to reduce the risk of uncharacteristic wildfire and other disturbances to protect lives, communities, and ecological values
- Promote better outcomes for a broad spectrum of ecological, social, and community resources and values in a manner that recognizes and responds to the important role of natural fire and helps mitigate risk in the wildland urban interface while providing for sustainable user access
- Protect and restore watershed conditions that maintain uplands, late-successional habitat and large old trees, riparian and instream habitat, and water quality and quantity for the benefit of communities and native fish and wildlife
- Design and implement treatments to support the recovery of threatened, endangered, and sensitive species

Goal 2: Develop an effective model for collaboration among the USFS, other federal, state, and local agencies, local Tribes, the North Central Washington Forest Health Collaborative and member organizations, as well as a wide range of local landowners, community partners and stakeholders. This collaborative planning effort will increase the shared leadership of the forest and watershed restoration vision and will result in greater support for all management tools needed to implement terrestrial and aquatic treatment actions on this landscape.

Goal 3: Optimize the production of ecosystem services and forest products to fulfill the stewardship mandate of the U.S. Forest Service in a manner that reflects a broad spectrum of ecological, cultural, and socio-economic values.

Key Project Contacts:

Jeff Rivera, Wenatchee River District Ranger

Paul Kelley, Environmental Coordinator,
Wenatchee River Ranger District

Deborah Kelly, Acting Public Affairs Officer,
Okanogan-Wenatchee NF

