

LOWER WENATCHEE RIVER COMMUNITY MEETING

- Welcome and Introductions
- Background on Watershed Planning and Salmon Recovery Planning
- Implementation Priorities and Completed Projects
- Ongoing and Upcoming Efforts

Watershed Planning

Wenatchee River Watershed

- Planning Process began in 1999 under RCW 90.82
- Plan Approved in 2006 by local stakeholder group
- All 4 Elements Included: Water Quantity, Instream Flows, Water Quality and Habitat

Endangered Species Act (ESA)

- Upper Columbia spring Chinook – 1999 endangered
- Upper Columbia steelhead – 1997 endangered, re-classified as threatened
- Bull Trout - threatened

ESA Efforts

- Development of federal recovery plans
- NOAA-Fisheries and US Fish and Wildlife Service
- Watershed Planning Units/Watershed Action Teams
- Upper Columbia Salmon Recovery Board

Implementation

- Meetings, coordination, partners
- Funding mechanisms
- Focus on restoring natural processes in high priority areas.



Wenatchee River Basin Salmon **Restoration** Priorities

| Assessment Unit | Priority |
|------------------------|-----------------------------|
| Nason Creek | 1 |
| Upper Wenatchee River | 2 |
| Icicle Creek | 3 |
| Peshastin Creek | 4 |
| Lower Wenatchee River | 5 |
| Mission Creek | 6 |
| Little Wenatchee River | Not a priority at this time |
| White River | Not a priority at this time |
| Middle Wenatchee River | Not a priority at this time |
| Chumstick Creek | Not a priority at this time |
| Chiwawa River | Not a priority at this time |

Wenatchee River Basin Salmon **Protection** Priorities

| Assessment Unit | Priority |
|------------------------|----------|
| Nason Creek | 1 |
| White River | 1 |
| Upper Wenatchee River | 1 |
| Chiwawa River | 1 |
| Little Wenatchee River | 2 |
| Middle Wenatchee River | 2 |
| Icicle Creek | 3 |
| Lower Wenatchee River | 3 |
| Peshastin Creek | 4 |
| Mission Creek | 4 |
| Chumstick Creek | 4 |

Lower Wenatchee River Recommended Strategy

- Implement channel connectivity and off-channel projects
- Plant native streamside vegetation (riparian plantings)
- Address dissolved oxygen and pH issues (phosphorus point and non-point sources)
- Water Quantity and instream flow actions

Wenatchee Watershed Work Completed to Date

Table 11. Comparison of Projects Completed to Priorities Identified in Table 7 of the Biological Strategy (UCRTT 2013)

| Sub-Watershed | # Projects | Amt Spent | Ecological Concern | | | | | | | | | | | | |
|------------------|------------|--------------|----------------------------|-------------------------------------|--------------|------------------|---------------------|---------------|---------------------|------------------|---------------------|---------------------|------------|--|-------------|
| | | | Channel Structure and Form | Peripheral and Transitional Habitat | Riparian | Habitat Quantity | Water Quantity | Water Quality | Sediment Conditions | Injury Mortality | Food | Species Interaction | Protection | | |
| Nason | 10 | \$7,962,563 | .37 mile | 51 logs/log structures | 202.38 acres | | | | | | | | | | 80 acres |
| Upper Wenatchee | 5 | \$2,322,313 | .2 mile | 7 ELJ's | | | 8 barriers removed | | | | | | | | |
| Icicle Creek | 6 | \$741,663 | | | | 0.69 miles | 3 | | | | | | | | 286 acres |
| Peshastin | 8 | \$1,774,533 | | | 0.3 acres | | 9 barriers removed | 1.2 cfs | | | | | | | |
| Lower Wenatchee | 30 | \$8,318,978 | .39 miles | 16 large wood structures | 1.98 miles | 11.6 acres | | 16 cfs | | | 1 | | | | 3.5 acres |
| Mission Creek | 10 | \$514,948 | .62 miles | | | 3.66 acres | 3 barriers removed | | | | | | | | |
| Little Wenatchee | | \$0 | | | | | | | | | | | | | |
| White River | 17 | \$4,387,028 | | 128 logs/log structures | | 0.81 acres | 12 barriers removed | | | 1.46 miles | | | | | 601.4 acres |
| Middle Wenatchee | | | | | | | | | | | | | | | |
| Chumstick | 15 | \$5,843,670 | | | | 6.54 acres | 36 barriers | 0.02 cfs | | | 1 screen | | | | |
| Chiwawa | 7 | \$914,514 | | | | 32.6 acres | 5 barriers removed | | | 2.5 miles | 1 structure upgrade | | | | |
| Total | | \$32,780,211 | | | | | | | | | | | | | |

Restoration Priorities:

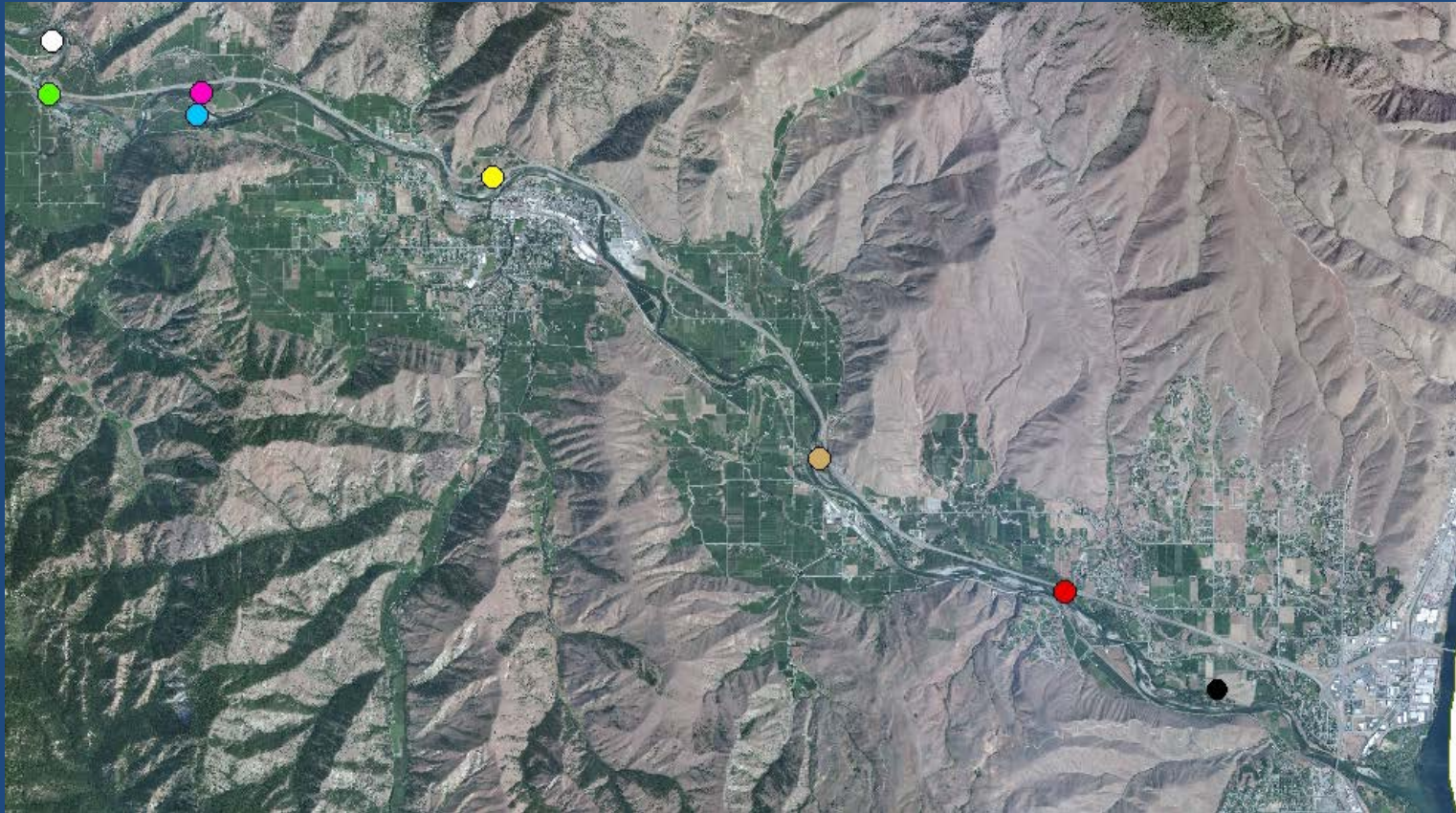
#1 Ecological Concern to be addressed

#2 Ecological Concern to be addressed

#3 Ecological Concern to be addressed

Protection Priorities: Tier 1 = Nason, White, Upper Wenatchee, Chiwawa, Tier 2 = Little Wenatchee, Middle Wenatchee, Tier 3 = Icicle Creek, Lower Wenatchee, Tier 4 = Mission, Chumstick, Peshastin

Channel Migration Zone (CMZ) Projects in Lower Wenatchee



● CMZ 13, CCNRD, 2008

● CMZ 11, CCNRD, 2008

● Cashmere pond, CCNRD, 2009

● CMZ 6, CCNRD, 2010

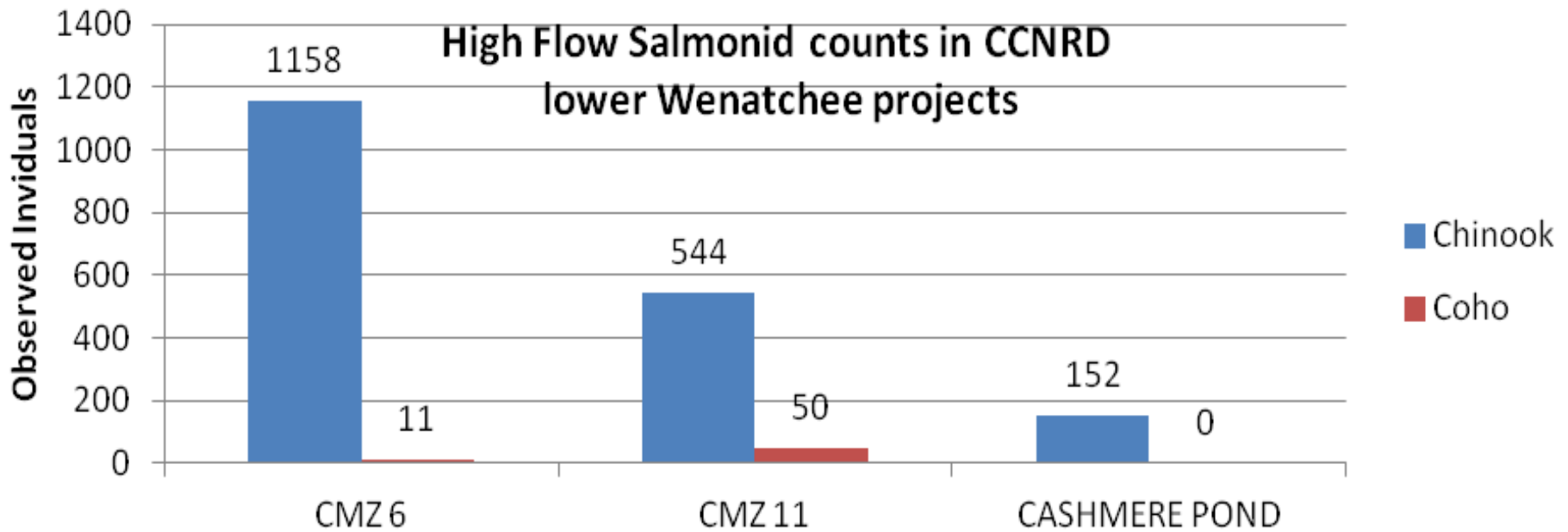
● Gagnon Pond, CCNRD, 2007

● Dryden CMZ project, PUD, 2006

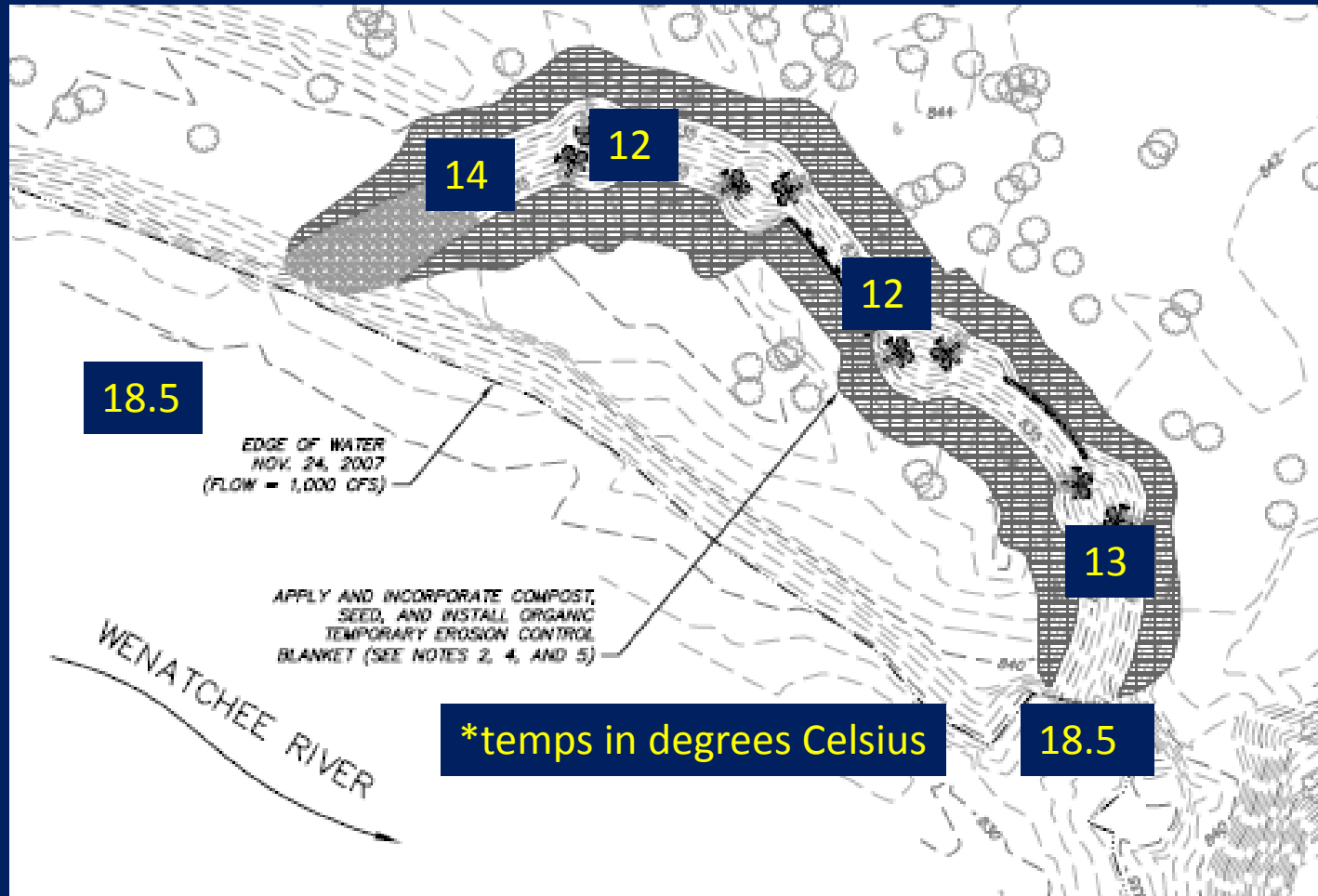
● Pioneer side channel, TU, 2014

● Goodfellow CMZ project, YN, 2010

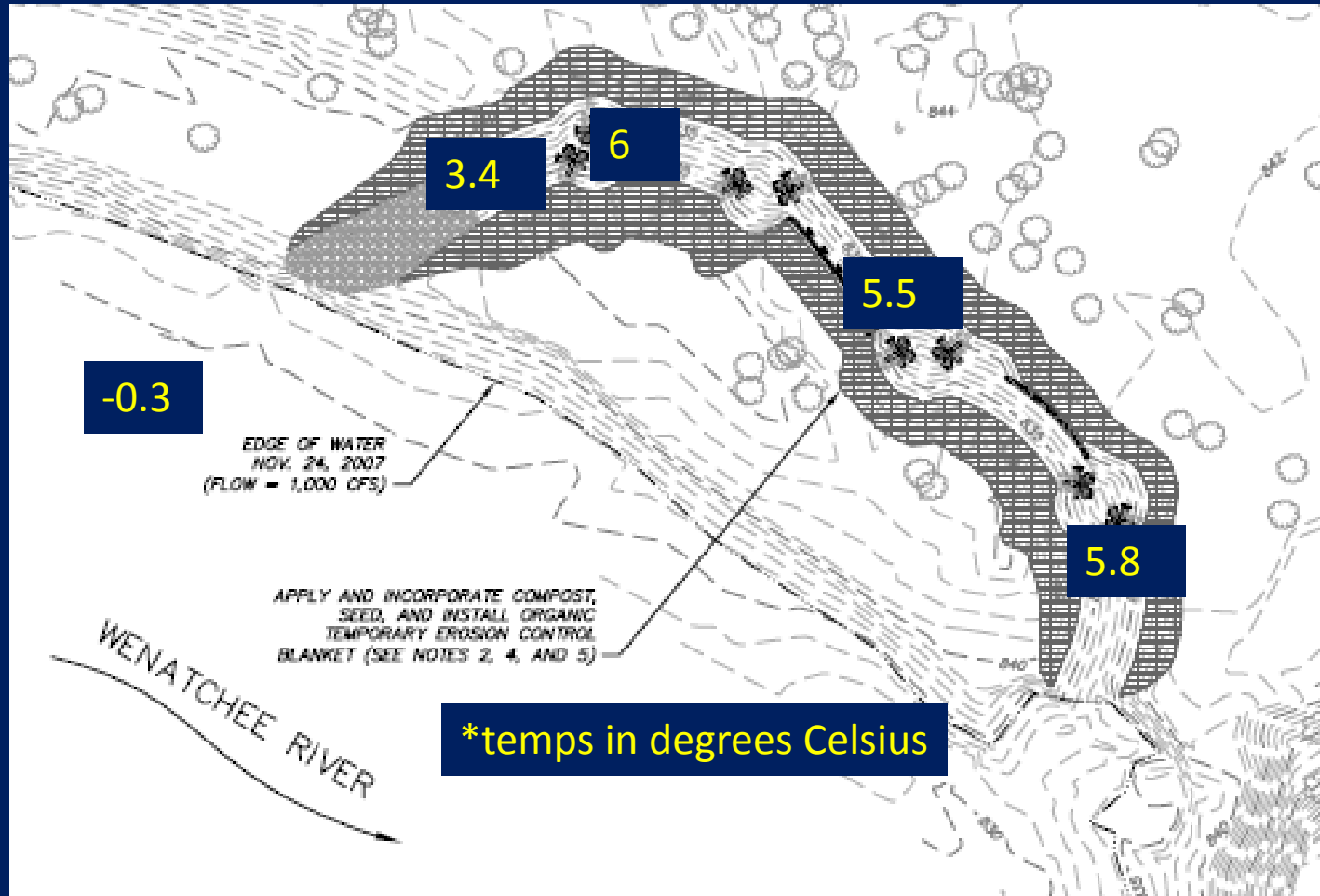
June 26th, 2014
6880 cfs



CMZ 11 stream temps 8/19/2014



CMZ 11 stream temps 12/31/2014



Adaptive Management actions identified from Riparian Monitoring at CMZ's:

STAGING AREAS:

- 1) Treat noxious weeds (knapweed)
- 2) De-compact
- 3) Re-plant with Cottonwood, snowberry, pine and rose.



Banks of CMZ's continue to re-vegetate



Ongoing and Upcoming Efforts

- Lower Wenatchee River Reach Assessment
 - Build on existing work to understand physical processes of river
 - Develop a restoration strategy and identify projects
- PCB and DDT Source Assessment
 - Final report expected early fall
 - Additional source tracking and food web bioaccumulation model

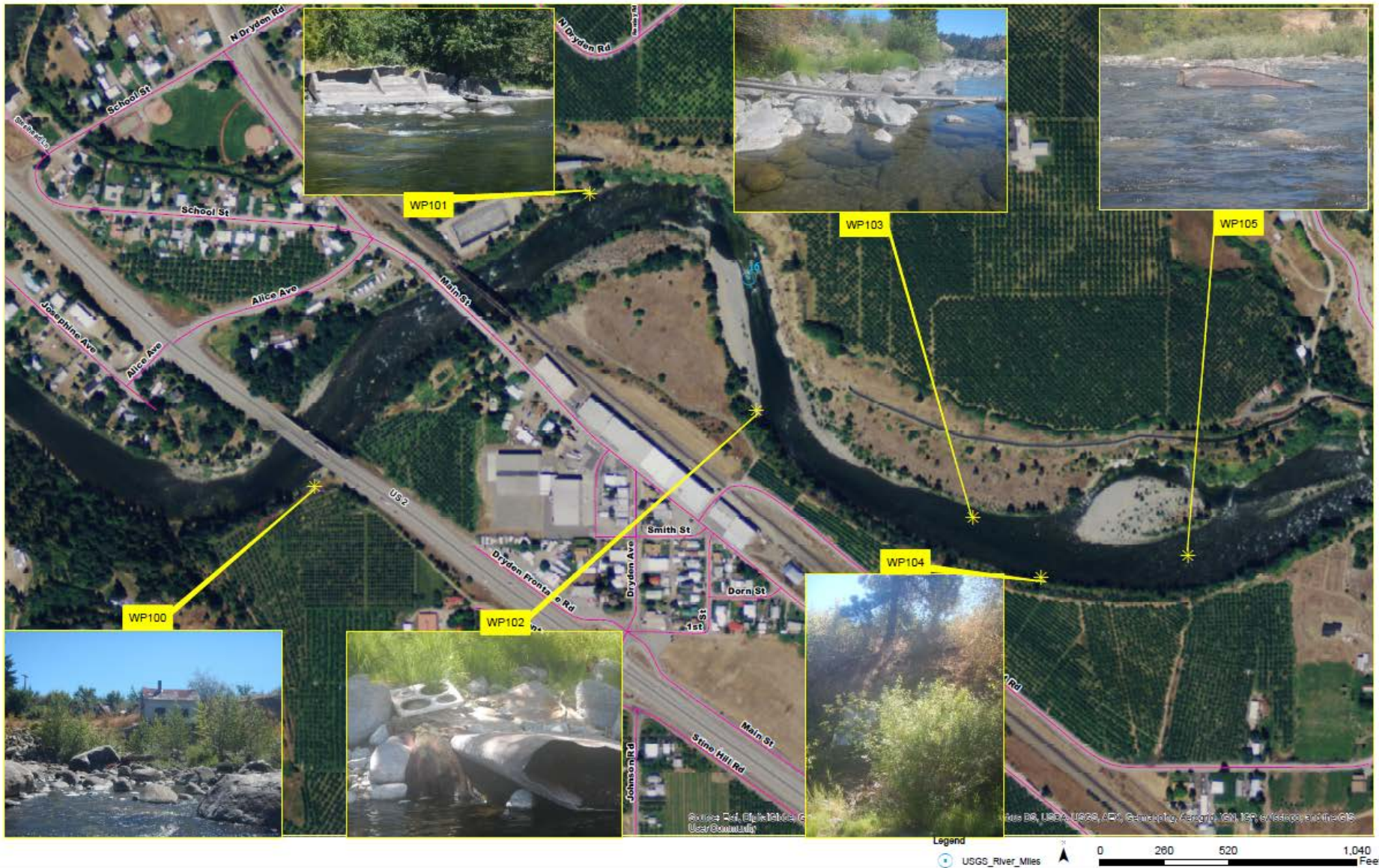
River Clean Up - Debris Removal

- Past removal of cars, bridge abutment, metal, etc.
- 2015 oil tank abutment
- WDOE and WDNR Funding



2015 Wenatchee River Debris Inventory

Wenatchee River Debris Inventory Near Dryden



Riparian Prioritization

Wenatchee River and Tributaries

- Document and analyze existing riparian conditions (LiDAR, aerial photos)
- Create maps adding additional data: water temperature, land use, soil type, shade, etc
- Establish priorities and identify riparian restoration actions

Instream Flow Rule

- Wenatchee Instream Flow Rule (WAC 173-545) established through Wenatchee Watershed Planning
- ESSB 6513 – reservation of water for domestic use
- Coordinated Cost Reimbursement process to start in 2016 – water right processing

Voluntary Stewardship Program

- Regulatory alternative for agriculture in critical areas
- VSP work group
- 2017 implementation

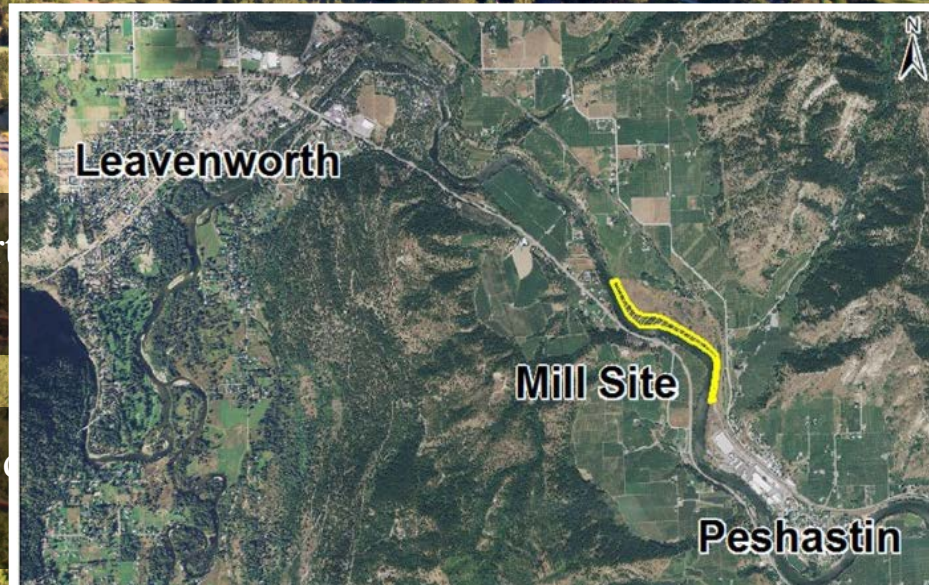
Peshastin Mill Site Riverfront PRESERVATION PROJECT

14 Acres & 0.85 Miles of Riverfront

(The longest stretch of public access to the Wenatchee River left along the 22 miles between Leavenworth and Wenatchee!)

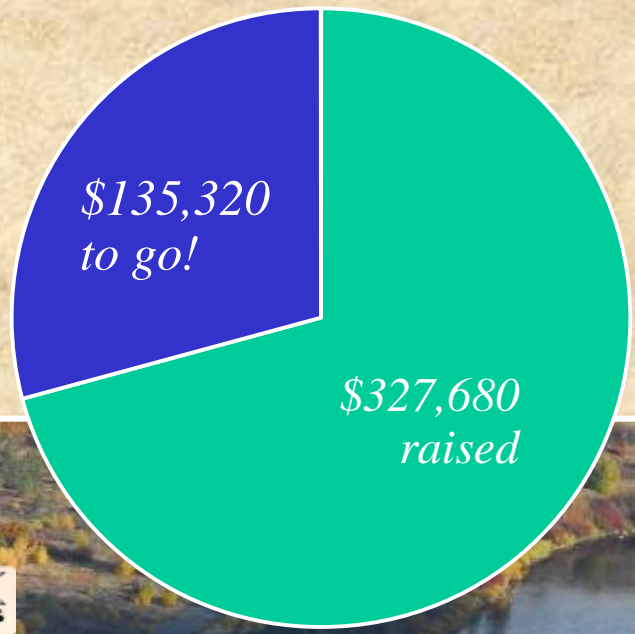
Will be owned and maintained by the Department of Parks and Recreation

To be protected from future development



For the community BY THE COMMUNITY

217 supporters have contributed \$327,680.





Join the community effort **IT'S NOW OR NEVER!**

www.SavePeshastinMillWaterfront.org

Supporters contributing \$5,000+ will have their names etched in stone on the site

Join the 500 Club and receive a pewter 'Save the Peshastin Mill Site' fish pin

See the property for yourself at the Open House
Saturday & Sunday, June 18-19, 10am-6pm.
Free BBQ Celebration of Life for Kevin Worth Saturday, June 18
from 1-3pm

HELP SPREAD THE WORD & THANK YOU!