

# WENATCHEE WATERSHED COMMUNITY MEETINGS

*Learn about upcoming stream and forest restoration projects and water resource management in your area.*



## NEED MORE INFORMATION?

Please contact:

**Mary Jo Sanborn**

Chelan County Natural Resource Dept.

411 Washington Street, Suite 201

Wenatchee, WA 98801

509.667.6532

maryjo.sanborn@co.chelan.wa.us

Visit our website for meeting  
information

[www.co.chelan.wa.us/natural-resources](http://www.co.chelan.wa.us/natural-resources)



### Nason Creek

Saturday, May 14th, 10:00 am to noon

Lake Wenatchee Fire Hall (FD #9)

### Chumstick Creek

Wednesday, May 18th, 6:30 pm to 8:30 pm

Leavenworth Fire Hall (FD #6)

### Upper Wenatchee River (including Lake Wenatchee, Little Wenatchee River, White River and Chiwawa River)

Saturday, May 21st, 10:00 am to noon

Lake Wenatchee YMCA Camp

### Mission Creek

Wednesday, May 25th, 6:30 pm to 8:30 pm

Cashmere Riverside Center

### Lower Wenatchee River (Leavenworth to Columbia River)

Wednesday, June 1st, 6:30 pm to 8:30 pm

Cashmere Riverside Center

### Peshastin Creek

Wednesday, June 8th, 6:30 pm to 8:30 pm

Dryden Fire Station (FD #6)

### Topics discussed at Watershed Community

#### Meetings will include:

- Updates on completed and proposed stream restoration projects
- Updates on water resources and forest management projects

# CHUMSTICK CREEK COMMUNITY MEETING

- Welcome and Introductions
- Background on Watershed Planning and Salmon Recovery Planning
- Implementation Priorities
- Completed and Ongoing Projects
- Future Efforts and Opportunities

# Watershed Planning

## Wenatchee River Watershed

- Planning Process began in 1999 under RCW 90.82
- Plan Approved in 2006 by local stakeholder group
- All 4 Elements Included: Water Quantity, Instream Flows, Water Quality and Habitat

# Endangered Species Act (ESA)

- Upper Columbia spring Chinook – 1999 endangered
- Upper Columbia steelhead – 1997 endangered, re-classified as threatened
- Bull Trout - threatened



# ESA Efforts

- Development of federal recovery plans
- NOAA-Fisheries and US Fish and Wildlife Service
- Watershed Planning Units/Watershed Action Teams
- Upper Columbia Salmon Recovery Board

# Implementation

- Meetings, coordination, partners
- Funding mechanisms
- Focus on restoring natural processes in high priority areas.



# Wenatchee River Basin Salmon **Restoration** Priorities

Assessment Unit	Priority
Nason Creek	1
Upper Wenatchee River	2
Icicle Creek	3
Peshastin Creek	4
Lower Wenatchee River	5
Mission Creek	6
Little Wenatchee River	Not a priority at this time
White River	Not a priority at this time
Middle Wenatchee River	Not a priority at this time
Chumstick Creek	Not a priority at this time
Chiwawa River	Not a priority at this time



# Wenatchee River Basin Salmon **Protection** Priorities

Assessment Unit	Priority
Nason Creek	1
White River	1
Upper Wenatchee River	1
Chiwawa River	1
Little Wenatchee River	2
Middle Wenatchee River	2
Icicle Creek	3
Lower Wenatchee River	3
Peshastin Creek	4
Mission Creek	4
Chumstick Creek	4



# Chumstick Creek

## Recommended Strategy

- Address fecal coliform and temperature issues
- Increase water availability for instream and out-of-stream uses; Implement instream flow rule
- Riparian restoration – plant native streamside vegetation/remove noxious weeds/livestock exclusion fencing
- Address Increased Sediment Loads
- Restore passage with culvert improvements

# Wenatchee River Instream Flow Rule

- Balances community needs and fish needs
- Established 4 cfs reservation
- Provides reliable year-round domestic water for 20 years

# Chumstick Creek Instream Flow Rule

- Interim Reservation of 0.043 cfs for domestic water use for three years (begins in 2008)
  - 2008-14 Debit: 50 new wells = 0.0293 cfs (68% of interim reserve)
  - 0.0137 cfs remaining in interim reserve
- Instream Flow Improvements are needed to access full reservation of 0.13 cfs

# How do we increase instream flow?

- Conservation and Efficiencies
- Water purchased for Water Trust
- Establish a Water Bank
- Improve Stream Conditions
- Creative water solutions



# Completed Culvert Replacements and Monitoring Results





# Chumstick Barrier Removals

Approx 6 barriers prior to 2009

17 barriers (2009)

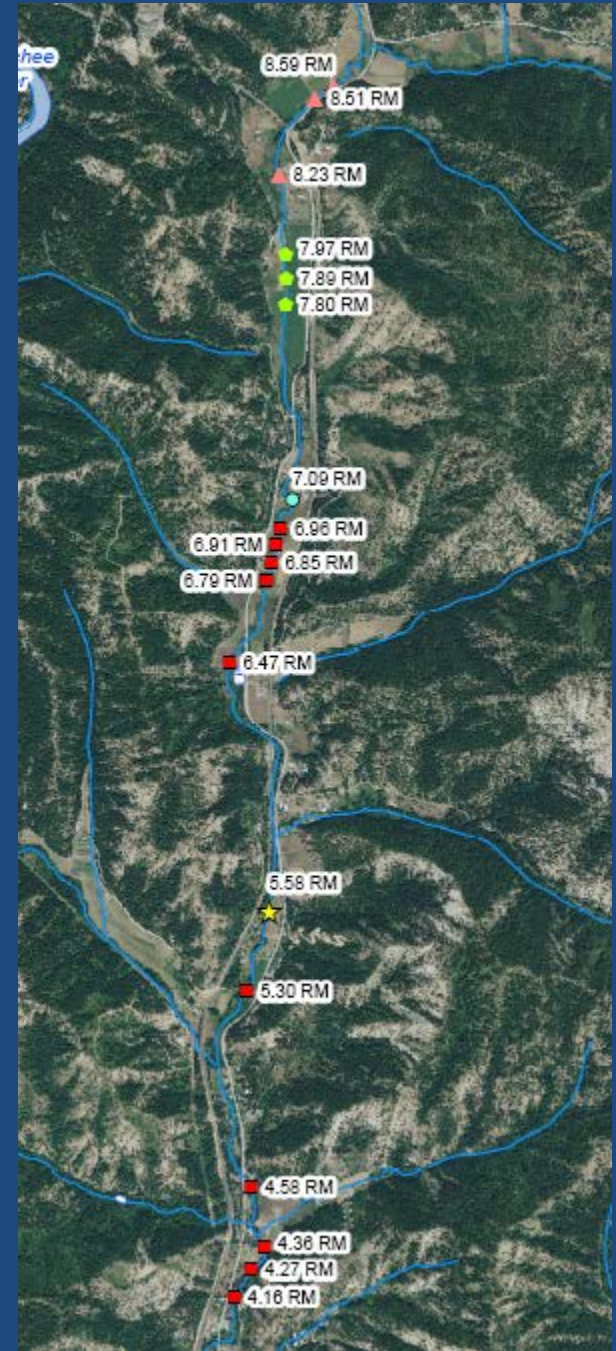
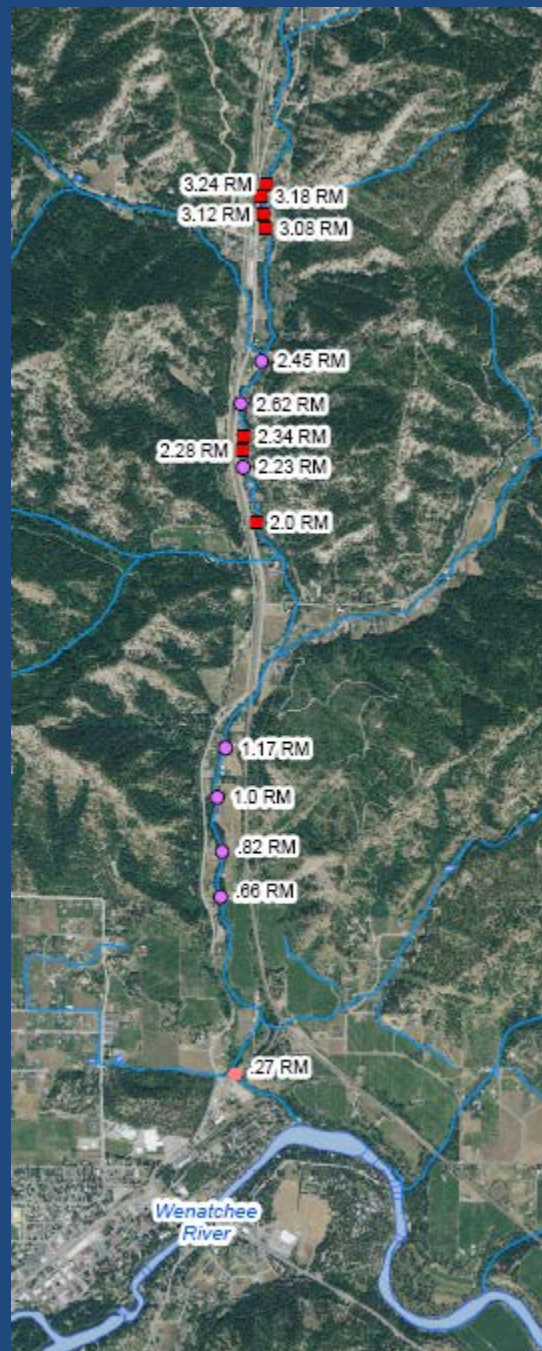
1 barrier at RM 6.91 (2010)

3 barriers at RM 7.8 (2011)

3 barriers at RM 8.23-8.59 (2012)

1 barrier at RM 7.09 (2013)

25+ TOTAL





## Shiebler RM 7.8-8.0



## Chumstick Complete Barrier Removals

### Cahail RM 5.7



# Adult Salmonid Chumstick Array Counts



Species	North Road 2013 (RM 0.28)	North Road 2014 (RM 0.28)	North Road 2015 (RM 0.28)	North Road 2016 (RM 0.28)	Sunitch 2013 (RM 5.3)	Sunitch 2014 (RM 5.3)	Sunitch 2015 (RM 5.3)	Sunitch 2016 (RM 5.3)	Merry 2013 (RM 8.8)	Merry 2014 (RM 8.8)	Merry 2015 (RM 8.8)	Merry 2016 (RM 8.8)
Wild Summer Steelhead	14	20	12	22	2				1			
Hatchery Summer Steelhead	17	20	19	16								
Hatchery Coho	4	14	9	0								
Wild Spring Chinook	2	1	1	2								
Hatchery Spring Chinook	4	1	3	3								
<b>Total</b>	<b>41</b>	<b>56</b>	<b>44</b>	<b>43</b>	<b>2</b>	<b>0</b>	<b>0</b>	<b>0</b>	<b>1</b>	<b>0</b>	<b>0</b>	<b>0</b>

Estimates are that detections represent approx. 10% of the actual run.



# Completed Riparian Planting Projects (CCNRD)

- Culvert replacements included re-planting disturbed areas with additional plantings at some sites
- 8 sites planted since 2012 totaling 6.5 acres (283,000 square feet) of stream
- 910 ft. of livestock exclusion fencing installed



# Cahail Riparian year 3 = 85% shrub cover

Spring 2011



Summer 2012



Summer 2013



Summer 2013



Shrub cover ranged from 35-144%






# 2015-16 Riparian Planting

- Site of 2011 barrier removal
- Recent work connects “islands” and extends downstream

Scheibler Planting Layout



## Legend

-  Stream Bank Area (Douglas Spirea, Oceanspray, Red Osier Dogwood)
-  Bench Planting Zone (Snowberry, Nootka Rose, Service Berry)
-  Chumstick at Scheibler

0 190 380 760 Feet





# Scheibler Planting on Chumstick



- CCNRD Staff and WCC crews spent 2 weeks of site prep: mowing and Reed Canary Grass rhizome scalping
- Installed 2,200 plants over 2 acres in 3 weeks (2015)
- Additional mowing, cardboard protection, and individual plant mulch (Spring 2016)





# Ongoing and Future Efforts

- Eagle Creek Fish Barrier Assessment
- Upper Wenatchee Community Lands Plan Update ([www.cdlandtrust.org](http://www.cdlandtrust.org))
- Firewise and Chumstick Wildfire Stewardship Coalition Update
- Riparian Planting (native streamside vegetation)
- Address Water Quantity Issues
- Address Fecal Coliform Issues



# Eagle Creek fish barrier assessment



# The First Steps towards barrier removal

---

- 22 potential barriers have been identified from aerial imagery.
- CCNRD will be contacting land owners seeking permission to access property.



# The First Steps towards barrier removal

---

- Barrier determination is a step-wise process of data collection and analysis.
- These are the first steps of a longer process to secure the funds necessary to remove barriers.



# Examples of Chumstick Project

BEFORE

AFTER





# Examples of Chumstick Project

BEFORE

---



AFTER

---





# Examples of Chumstick Project

BEFORE

---

AFTER

---



# UPPER WENATCHEE COMMUNITY LANDS PLAN

## PARCEL PRIORITIZATION

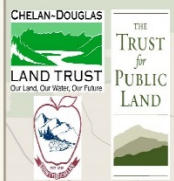
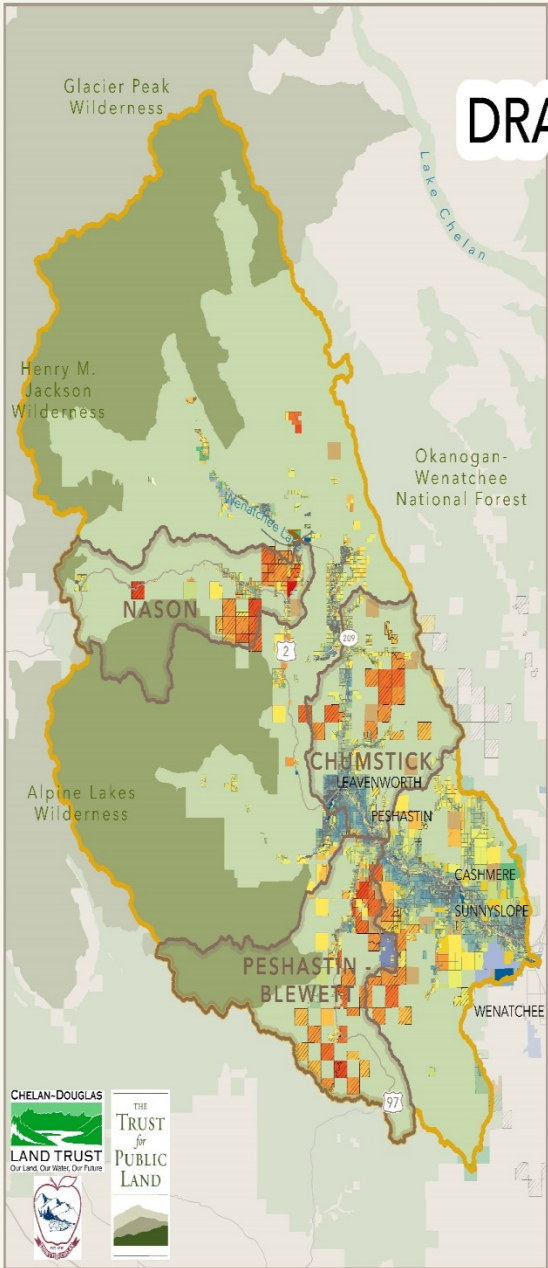
This map displays the results of the parcel prioritization analysis for the Wenatchee Community Lands Plan. These results were produced by summing the number of criteria that were found to overlap each parcel in the study area. The list of criteria included: USFS inholdings, parcels where clear cuts have occurred, parcels suitable for development, is a Weyerhaeuser property, has one owner with 160 acres or more of contiguous lands, adjacent to an existing protected land, has stream frontage, is alongside a Salmon bearing stream, contains WA PHS species and priority habitats, has high risk of catastrophic fire and is an above average score for terrestrial resilience.

### Sum of criteria overlapping parcel

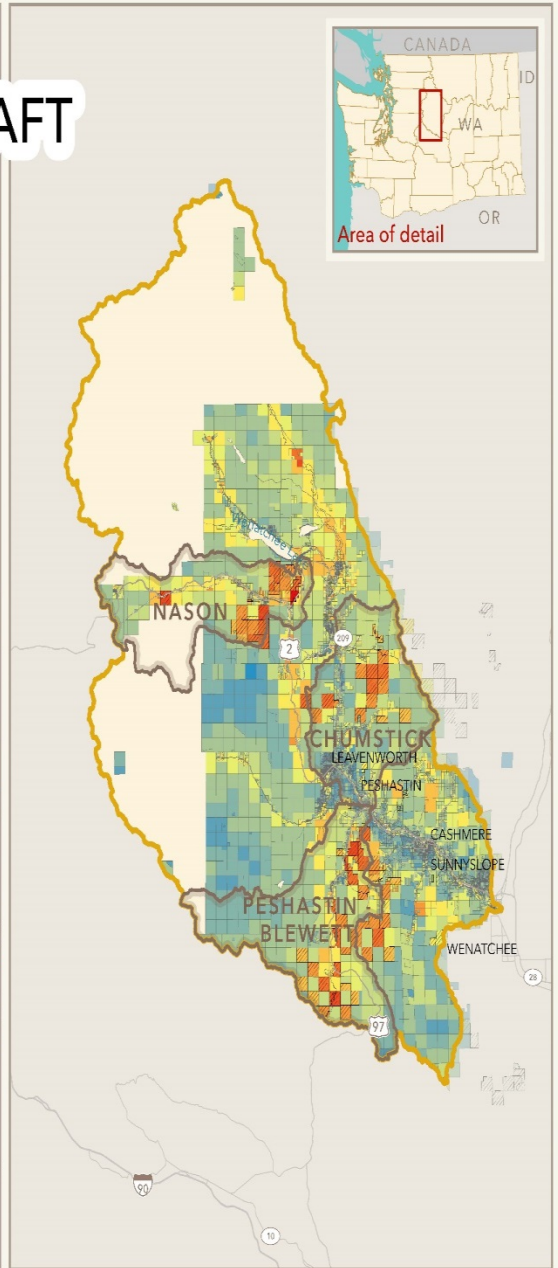
- 11
- 10
- 9
- 8
- 7
- 6
- 5
- 4
- 3
- 2
- 1
- 0

**DRAFT**

- Upper Wenatchee Community Lands Plan area of analysis
- Focus sub-area
- Longview/Weyerhaeuser parcel
- Private land
- National Wilderness Area
- National Forest
- Bureau of Land Management
- State Park
- WA DNR State Trust Land
- WA DNR Natural Area Preserve
- WA Dept. of Fish and Wildlife
- County Land
- Chelan-Douglas Land Trust
- Other park



**DRAFT**





## **Cascadia Conservation District**

[www.cascadiacd.org/](http://www.cascadiacd.org/) Look under programs for information on landowner assistance and wildfire preparedness.

Firewise Communities: [www.firewise.org](http://www.firewise.org)

## **Chumstick Wildfire Stewardship Coalition**

[www.chumstickcoalition.org/](http://www.chumstickcoalition.org/)