

# PESHASTIN CREEK COMMUNITY MEETING

- Welcome and Introductions
- Background on Watershed Planning and Salmon Recovery Planning
- Implementation Priorities and Completed Projects
- Ongoing and Upcoming Efforts

# Watershed Planning

## Wenatchee River Watershed

- Planning Process began in 1999 under RCW 90.82
- Plan Approved in 2006 by local stakeholder group
- All 4 Elements Included: Water Quantity, Instream Flows, Water Quality and Habitat

# Endangered Species Act (ESA)

- Upper Columbia spring Chinook – 1999 endangered
- Upper Columbia steelhead – 1997 endangered, re-classified as threatened
- Bull Trout - threatened

# Peshastin Creek

## Recommended Strategy

- Increase water quantity
- Restore instream habitat diversity (large wood, pools, fish holding and rearing habitat)
- Develop side channel habitat; improve wetland connections
- Riparian restoration – plant native vegetation
- Improve stream temperature

# New Water Policies

- WA Supreme Court cases
- *Swinomish, Foster, Hirst*
- Limits to Ecology's "toolbox"
- More local government responsibility



# CASCADIA

CONSERVATION DISTRICT

The Cascadia Conservation District is a non-regulatory, grant-funded organization dedicated to encouraging the wise stewardship and conservation of all natural resources in Chelan County.

Our board and staff members work cooperatively with local landowners and communities to provide technical and financial assistance for soil, water, forest, fish, and wildlife conservation efforts. We currently serve all of Chelan County.

[www.cascadiacd.org](http://www.cascadiacd.org)

# How do we protect our rivers?

- ▶ Riparian Projects
- ▶ Water Conservation
- ▶ Wildfire Risk Reduction Projects
- ▶ Soil Tests
- ▶ Education and Outreach

# Riparian

- ▶ Over 2,000 feet of restored riparian along the lower Wenatchee
- ▶ Work with landowners to develop stewardship plans to clean up waste and plan for long term stewardship of the land
- ▶ Education and community involvement!





# Cashmere Sportsman's Club

- ▶ 1,800 feet along the Wenatchee planted and enhanced riparian
- ▶ Stewardship plan including a lead cleanup that removed approximately 25,000 pounds of lead from the range
- ▶ Long term stewardship plan to maintain and use the riparian area as a wildlife refuge and walking path



# Water Conservation

- Work with private landowners to implement BMP's on their property with cost sharing
- Watering conservation, weed management, fuels reduction, etc.
- 14 acres of irrigation upgrade on pear orchard in Cashmere
  - Impact Sprinklers to Micro
  - Will result in 115,000 gallons reduction in water use in the summer, and 1.3 million over a season
  - Return water into Peshastin Irrigation Ditch System
  - Reduce nutrient leaching and runoff in rivers



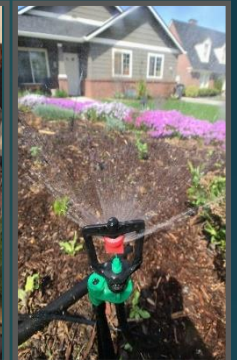
# Wildfire Risk Mitigation

- ▶ Catastrophic wildfire in a watershed can increase erosion and sediment, turbidity, flooding, increased water temperature
- ▶ Fuels Reduction Treatment in Forests with the Cost Share Program
- ▶ Spring and Fall “Free Roving Chipper” Program
- ▶ Working on forest restoration projects that span private and public lands by connecting landowners, Firewise Communities and Forest Health Collaboratives (CWSC, NCWFHC)



# Urban Ag and more

- ▶ Work with landowners to promote healthy soils and ag practices :
  - ▶ Composting manure, soil tests to reduce fertilizer runoff, native plantings and irrigation planning to conserve water.
  - ▶ Community Gardens
  - ▶ Container gardening workshops
  
- ▶ Learn more about all these programs  
[www.cascadiacd.org](http://www.cascadiacd.org) or (509) 436 -1601



# Education & Outreach

- ▶ Kids in the Creek
- ▶ Wheat Week and Water on Wheels
- ▶ Salmon Festival
- ▶ After School Program
- ▶ Participation in community events including: Earth Day Fairs, Farmer's Markets, river cleanups
- ▶ Native Plant Sale and Native Planting 101 Workshop
- ▶ Quarterly newsletter sent to all of Chelan County



# Yakama Nation

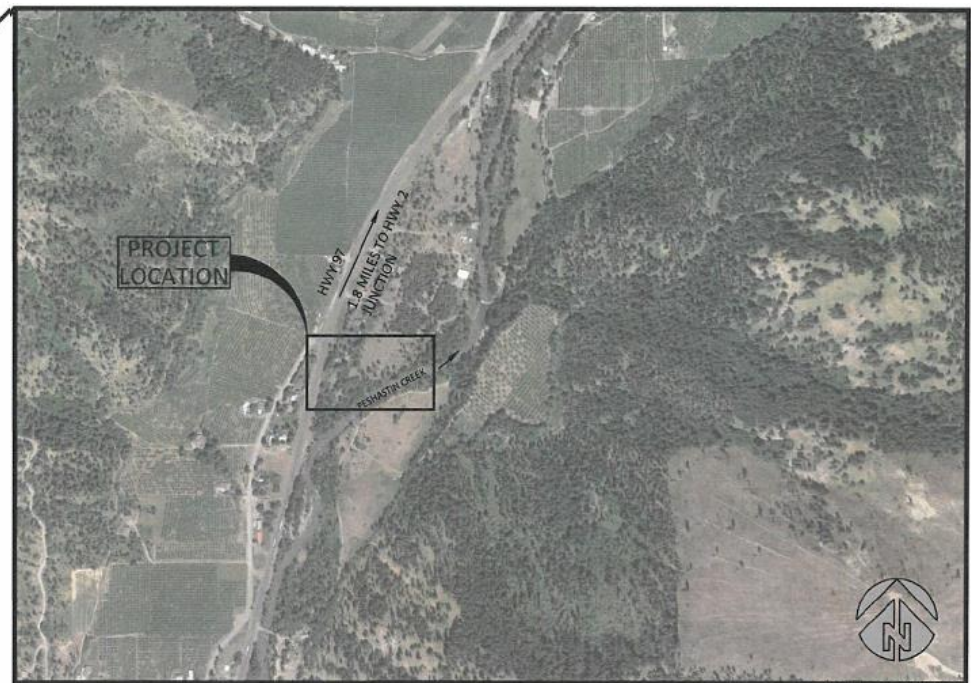
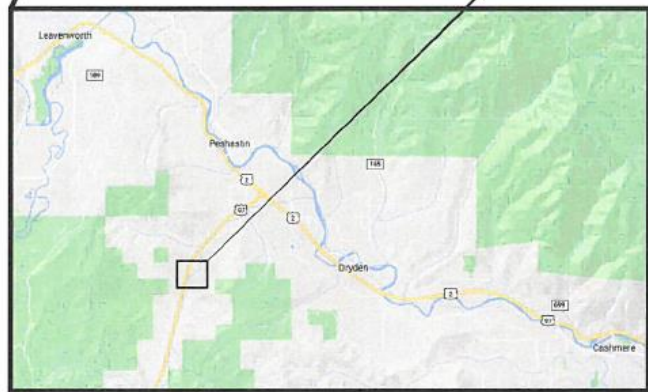
## Upper Columbia Habitat Restoration Project



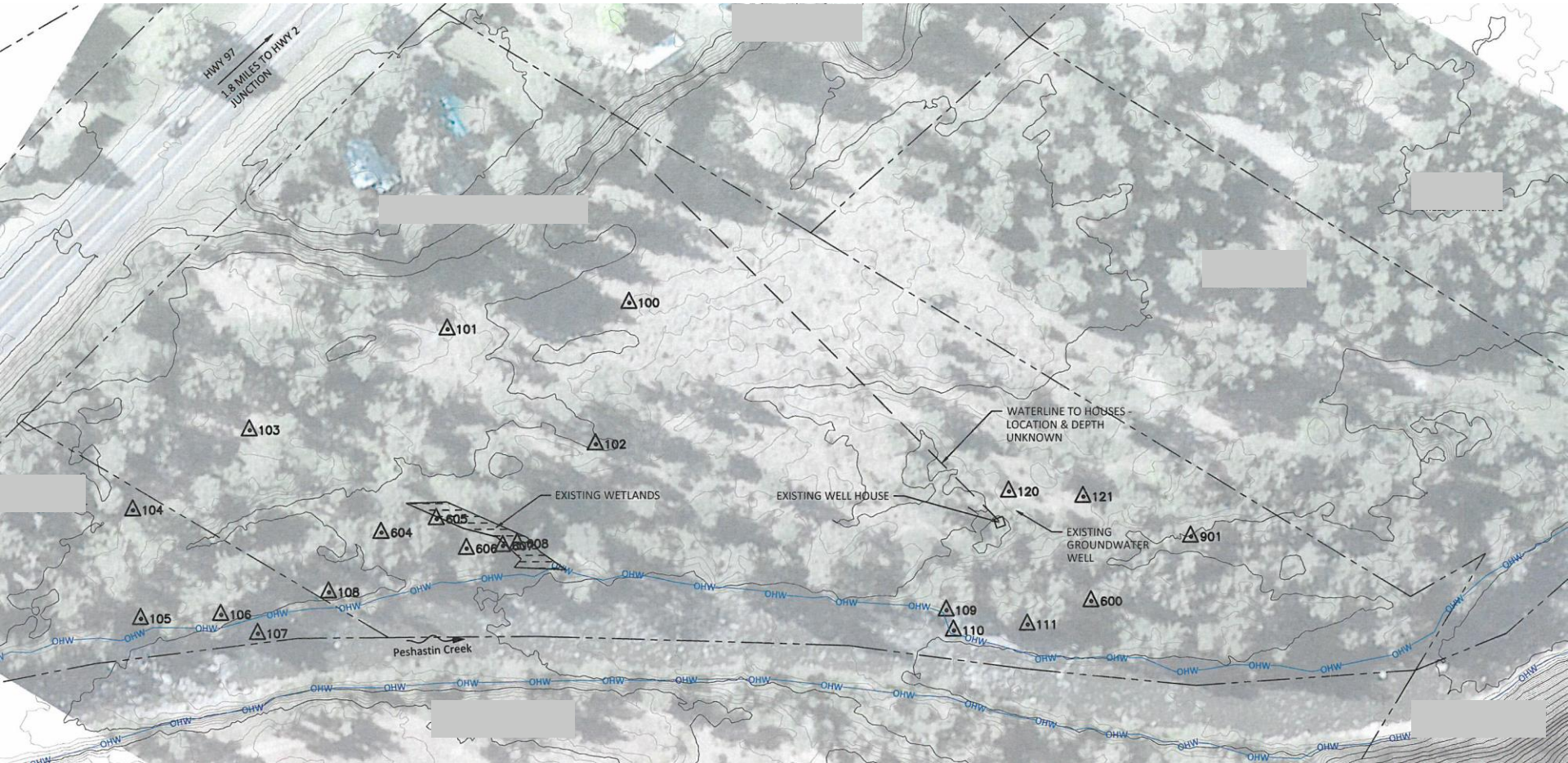
# Peshastin River Mile 2.7



## Location

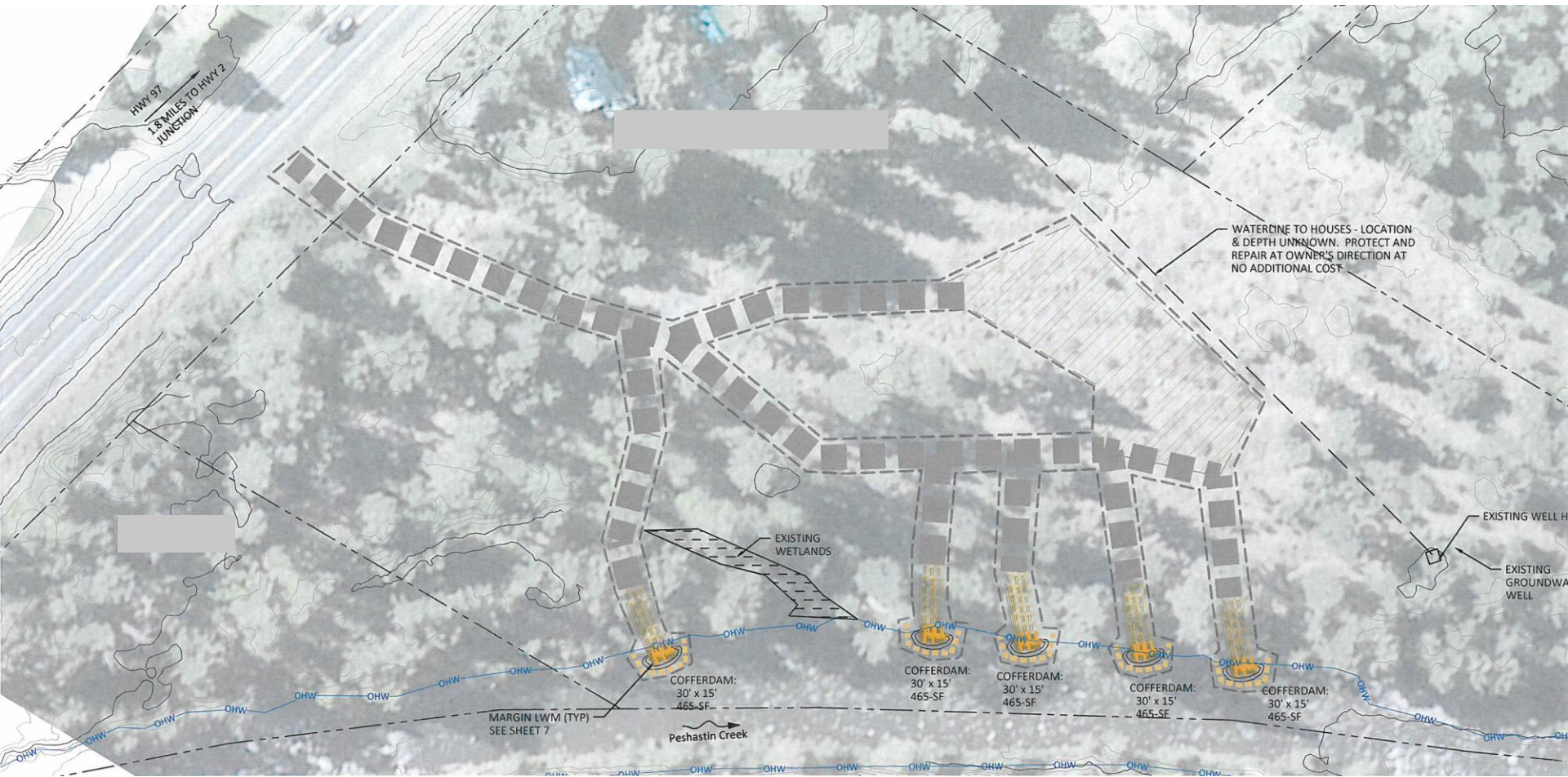


# Peshastin River Mile 2.7





# Peshastin River Mile 2.7



# Peshastin River Mile 2.7



## Benefits

- Provide immediate cover and pool habitat for juvenile and adult salmonids.



- Restore long-term riparian health and LW recruitment.

# Yakama Nation

Upper Columbia Habitat  
Restoration Project

Questions?



# Completed Projects

- Peshastin Creek Fishway at PID Diversion (2005)
- Peshastin Irrigation District Piping Project (2010-2011)
  - Over 9,000 ft of open ditch converted to pipe
  - 1.2 cfs saved for instream flow
- Side Channel levee breach at RM 0.8 (2012, YN)
- Riparian Plantings and Japanese Knotweed Control

# Ongoing and Upcoming Efforts

- Alluvial Water Storage
  - Large wood placement in small streams to reconnect floodplain, improve groundwater retention, and improve habitat
- Larsen Creek fish passage and alluvial storage
- PID Pump Station (Wenatchee River) Proposal
  - Instream flow benefit to lower 2.4 miles of Peshastin Creek

# Ruby Slide Fish Migration Barrier Assessment and Design

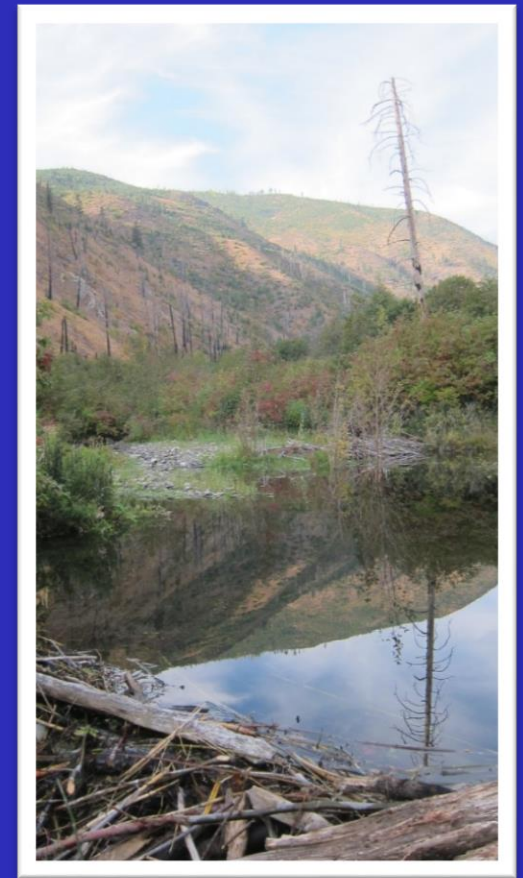
1. Is the slide acting as a fish migration barrier?
  - The data indicates **yes**, under certain conditions
2. Can a project be implemented to fix the barrier with the understanding that sliding will continue to occur?
  - Yes, but difficult to maintain



# Wenatchee Beaver Project

**Goal:** Re-establish beavers in Wenatchee Basin tributaries for habitat enhancement, flow augmentation and storage, and amelioration of climate-related impacts

- Loss of beaver among most profound causes of habitat alteration in headwater systems
- Beavers - Create complex stream habitat, recruit wood mitigate floods, reduce incision and promote floodplain interaction & enhance biodiversity
- Project will relocate ‘nuisance’ beavers through public and private land partnership for 10-15 pairs or family groups & conduct monitoring
- Assist landowners with management techniques for human-beaver compatibility.





# Voluntary Stewardship Program

- Regulatory alternative for agriculture in critical areas
- VSP work group
- Top priority: Riparian protection

# Riparian Prioritization

## Wenatchee River and Tributaries

- Document and analyze existing riparian conditions (LiDAR, aerial photos)
- Create maps adding additional data: water temperature, land use, soil type, shade, etc
- Establish priorities and identify riparian restoration actions

# Peshastin Creek Confluence Restoring the Alluvial Fan

Cascade Columbia Fisheries  
Enhancement Group (CCFEG)