

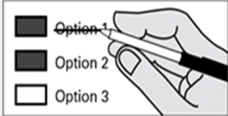
Instructions:

How to vote



Use a dark blue or black ink pen to completely fill in the box to the left of your choice.  
Vote for one in each race. If you vote for more than one, no votes will be counted for that race.

If you make a mistake



Draw a line through the entire measure response or candidates name.  
Then you may make another choice.



Who donates to campaigns?

View contributors for candidates and measures  
**Public Disclosure Commission**  
[www.pdc.wa.gov](http://www.pdc.wa.gov)  
Toll Free (877) 601-2828

Local Issues

School District

CASCADE SCHOOL DISTRICT NO. 228  
PROPOSITION 1

REPLACEMENT MAINTENANCE AND OPERATION LEVY  
The Board of Directors of Cascade School District No. 228 adopted Resolution No. 16/17-11, concerning a proposition to finance maintenance and operation expenses. This proposition would authorize the District to levy the following excess taxes, in place of an expiring levy, upon all taxable property within the District, for support of the District's General Fund educational maintenance and operation expenses:

Collection Year	Approximate Levy	
	Rate/\$1,000 Assessed Value	Levy Amount
2018	\$1.38	\$3,163,728
2019	\$1.38	\$3,195,365
2020	\$1.38	\$3,227,319
2021	\$1.38	\$3,259,592

all as provided in Resolution No. 16/17-11. Should this proposition be approved?

☐ LEVY. . . YES

☐ LEVY. . . NO

CASCADE SCHOOL DISTRICT NO. 228  
PROPOSITION 2

CAPITAL LEVY FOR TECHNOLOGY, SAFETY AND SECURITY IMPROVEMENTS  
The Board of Directors of Cascade School District No. 228 adopted Resolution No. 16/17-12, concerning a proposition to finance technology, safety and security improvements. This proposition would authorize the District to levy the following excess taxes, upon all taxable property within the District, to make technology, safety and security improvements throughout school facilities (including acquiring, installing, implementing and modernizing educational technology equipment and infrastructure, telecommunications systems, and life safety and security systems):

Collection Year	Approximate Levy	
	Rate/\$1,000 Assessed Value	Levy Amount
2018	\$0.15	\$350,000
2019	\$0.15	\$350,000
2020	\$0.15	\$350,000
2021	\$0.15	\$350,000

all as provided in Resolution No. 16/17-12. Should this proposition be approved?

☐ LEVY. . . YES

☐ LEVY. . . NO

**MANSON SCHOOL DISTRICT NO. 19**  
**PROPOSITION 1**

**REPLACEMENT MAINTENANCE AND OPERATION LEVY**  
The Board of Directors of Manson School District No. 19 adopted Resolution No. 12-12-16C, concerning a proposition to finance maintenance and operation expenses. This proposition would replace an expiring levy and place an excess tax on all taxable property within the District to support of the District's General Fund:

Collection Year	Approximate Levy Rate/\$1,000 Assessed Value	Levy Amount
2018	\$1.6525	\$1,333,609
2019	\$1.7167	\$1,426,962

Should this proposition be approved?

☐ LEVY... YES

☐ LEVY... NO

## City

**CITY OF WENATCHEE**  
**PROPOSITION 1**  
**WALNUT/MCKITTRICK ISLAND ANNEXATION**

Referendum Measure concerning the Walnut/  
McKittrick Island Annexation

The Wenatchee City Council passed Ordinance No. 2016-28, annexing into the city 129.5 acres known as the Walnut/McKittrick Island Annexation area, adopting existing city zoning regulations, and requiring assumption of existing city indebtedness. This measure would approve the city's annexation of the Walnut/McKittrick Island Annexation area to become part of the city. Should this measure be enacted into law?

☐ For annexation

☐ Against annexation

**CITY OF WENATCHEE**  
**PROPOSITION 2**  
**WALNUT/MCKITTRICK ISLAND ANNEXATION**

The Wenatchee City Council passed Ordinance No. 2016-28, annexing into the city 129.5 acres known as the Walnut/McKittrick Island Annexation area, adopting existing city zoning regulations, and requiring assumption of existing city indebtedness. If annexation is approved by a majority vote in favor of Proposition No. 1, should the property within such area assume a proportionate share of the city's then-outstanding indebtedness and be assessed and taxed at the same rate and upon the same basis as property within the city?

☐ Yes☐ No

**CITY OF WENATCHEE  
PROPOSITION 2  
MAPLE ISLAND ANNEXATION**

The Wenatchee City Council passed Ordinance No. 2016-31, annexing into the city 9.6 acres known as the Maple Island Annexation area, adopting existing city zoning regulations, and requiring assumption of existing city indebtedness. If annexation is approved by a majority vote in favor of Proposition No. 1, should the property within such area assume a proportionate share of the city's then-outstanding indebtedness and be assessed and taxed at the same rate and upon the same basis as property within the city?

☐ Yes☐ No

**CITY OF WENATCHEE  
PROPOSITION 1  
MAPLE ISLAND ANNEXATION**

## Referendum Measure concerning the Maple Island Annexation

The Wenatchee City Council passed Ordinance No. 2016-31, annexing into the city 9.6 acres known as the Maple Island Annexation area, adopting existing city zoning regulations, and requiring assumption of existing city indebtedness. This measure would approve the city's annexation of the Maple Island Annexation area to become part of the city. Should this measure be enacted into law?

☐ For annexation

☐ Against annexation