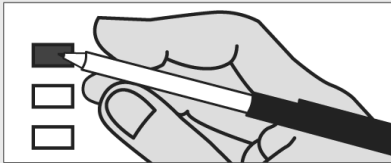


Sample Ballot
Chelan County, Washington
Primary Election
August 04, 2015

Precinct
1

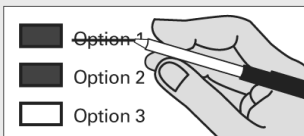
Instructions

How to vote



Use a dark blue or black ink pen to completely fill in the box to the left of your choice.
Vote for one in each race. If you vote for more than one, no votes will be counted for that race.

If you make a mistake



Draw a line through the entire measure response or candidate's name.
Then you may make another choice.

Optional write-in



To vote for a candidate not listed for that race, fill in the box to the left of "write-in" and print the name on the dashed line.

County Nonpartisan Offices

Port

Port Commissioner - District #3

6 Year Term - Vote for One

- John Farrell

- Michael Mackey

- Rory Turner

- Write-in

School District

Cascade School District No. 228

School Board Member - District #2

4 Year Term - Vote for One

- Larry Meyer

- Scott Bradshaw

- Brenda Biebesheimer

- Write-in

Cascade School District No. 228

School Board Member - District #4

4 Year Term - Vote for One

- Kristen K. Wood

- Kirk D. Laird

- Brantley F. Bain

- Write-in

Sample Ballot

Sample Ballot



Who donates to campaigns?

View contributors for candidates and measures

Public Disclosure Commission

www.pdc.wa.gov
Toll Free (877) 601-2828

Sample Ballot
Chelan County, Washington
Primary Election
August 04, 2015

City

City of Leavenworth
Council Member #2

4 Year Term - Vote for One

Raymond Laramie

Gary Thebault

Mia Bretz

Write-in

Hospital District

Hospital District No. 2 Commissioner #3

6 Year Term - Vote for One

Troy Hawkins

Francesca Farrell

Thomas C. Warren

Write-in

Sample Ballot

Sample Ballot