

Instructions:

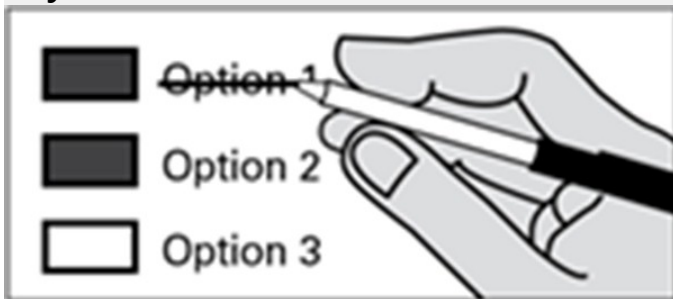
How to vote



Use a dark blue or black ink pen to completely fill in the box to the left of your choice.

Vote for one in each race. If you vote for more than one, no votes will be counted for that race.

If you make a mistake



Draw a line through the entire measure response or candidate's name. Then you may make another choice.

Who donates to campaigns?

View contributors for candidates and measures

Public Disclosure Commission

www.pdc.wa.gov
Toll Free (877) 601-2828

Local Issues

WENATCHEE SCHOOL DISTRICT NO. 246

PROPOSITION NO. 1

BONDS TO EXPAND AND MODERNIZE WENATCHEE HIGH SCHOOL

The Board of Directors of Wenatchee School District No. 246 adopted Resolution No. 09-17, concerning a proposition to relieve overcrowding and improve safety and infrastructure. This proposition would authorize the District to: expand and modernize Wenatchee High School (including constructing additional classrooms; making safety, technology and energy improvements; redesigning existing classrooms; constructing new space for library, music, kitchen, cafeteria and commons; upgrading HVAC, mechanical and electrical systems; acquiring land; and renovating athletic facilities); issue no more than \$120,000,000 of general obligation bonds maturing within 20 years; and levy annual excess property taxes to repay the bonds, all as provided in Resolution No. 09-17. Should this proposition be:

Approved

Rejected

88438

Sample Ballot

Special Election
April 24, 2018
Chelan County, Washington

Precinct 100

Page 2 of 2

Fire District

FIRE DISTRICT NO. 7

PROPOSITION NO. 1

AUTHORIZING PROPERTY TAX LEVY LID LIFT FOR FIRE AND EMERGENCY SERVICES

To maintain funding for fire protection and emergency medical services, the Board of Commissioners of Chelan County Fire Protection District No. 7 adopted Resolution No. 2018-01 concerning a proposition to set a regular levy rate of \$1.32 per \$1,000.00 of assessed valuation to be levied in 2018 for collection in 2019. The maximum allowable levy in 2018 shall serve as the base for computing subsequent levy limitations as provided by chapter 84.55 RCW. Shall this proposition be approved?

Yes
 No

Parks and Recreation District

MANSON PARKS AND RECREATION DISTRICT

PROPOSITION NO. 1

MAINTENANCE AND OPERATION FUNDING

Will the Manson Parks and Recreation District be authorized to impose regular property tax levies of \$0.23 or less per thousand dollars of assessed valuation for each of three consecutive years, collected in 2019, 2020, and 2021, to replace an expired maintenance and operation levy to support parks and programs, including lifeguards and AAU, as provided in Resolutions 2018-1 and 2018-2?

Yes
 No

88438